

### Anti-Matrin 3 antibody [EPR10635(B)] ab151714

KO 評価済 リコンビナント RabMAb

★★★★☆ 5 Abreviews 10 References 画像数 15

#### 製品の概要

製品名	Anti-Matrin 3 antibody [EPR10635(B)]
製品の詳細	Rabbit monoclonal [EPR10635(B)] to Matrin 3
由来種	Rabbit
アプリケーション	<b>適用あり:</b> Flow Cyt (Intra), WB, IHC-P, ICC/IF
種交差性	<b>交差種:</b> Mouse, Rat, Human
免疫原	Synthetic peptide. This information is proprietary to Abcam and/or its suppliers.
ポジティブ・コントロール	HEK293T, K562, HeLa and HepG2 whole cell lysate ( <b>ab7900</b> ); Human brain tissue, Human colon tissue and Human breast carcinoma tissue; Mouse and rat liver tissue, Mouse and Rat brain tissue lysate.
特記事項	<p>This product is a recombinant monoclonal antibody, which offers several advantages including:</p> <ul style="list-style-type: none"> <li>- High batch-to-batch consistency and reproducibility</li> <li>- Improved sensitivity and specificity</li> <li>- Long-term security of supply</li> <li>- Animal-free production</li> </ul> <p>For more information <b><a href="#">see here</a></b>.</p> <p>Our RabMAb<sup>®</sup> technology is a patented hybridoma-based technology for making rabbit monoclonal antibodies. For details on our patents, please refer to <b><a href="#">RabMAb<sup>®</sup> patents</a></b>.</p>

#### 製品の特性

製品の状態	Liquid
保存方法	Shipped at 4°C. Store at +4°C short term (1-2 weeks). Upon delivery aliquot. Store at -20°C long term. Avoid freeze / thaw cycle.
バッファー	Preservative: 0.01% Sodium azide Constituents: 40% Glycerol (glycerin, glycerine), 0.05% BSA, 59% PBS
精製度	Protein A purified
ポリ/モノ	モノクローナル
クローン名	EPR10635(B)
アイソタイプ	IgG

## アプリケーション

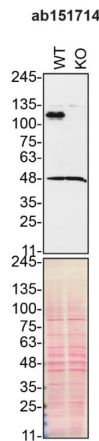
**The Abpromise guarantee** Abpromise保証は、次のテスト済みアプリケーションにおけるab151714の使用に適用されます  
アプリケーションノートには、推奨の開始希釈率がありますが、適切な希釈率につきましてはご検討ください。

アプリケーション	Abreviews	特記事項
Flow Cyt (Intra)		1/220.
WB	★★★★★ (2)	1/10000 - 1/50000. Predicted molecular weight: 95 kDa.
IHC-P		1/2000. Perform heat mediated antigen retrieval with citrate buffer pH 6 before commencing with IHC staining protocol. See <b><u>IHC antigen retrieval protocols</u></b> . <b>For unpurified use at 1/250 - 1/500.</b>
ICC/IF	★★★★★ (1)	1/250 - 1/500.

## ターゲット情報

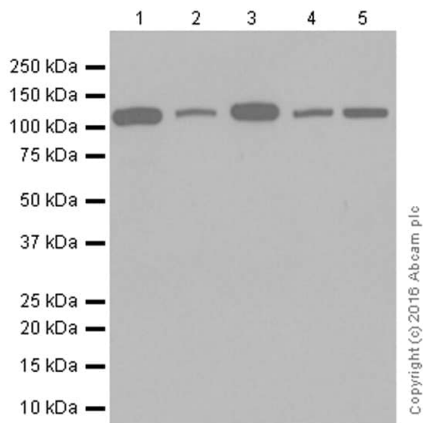
機能	May play a role in transcription or may interact with other nuclear matrix proteins to form the internal fibrogranular network. In association with the SFPQ-NONO heteromer may play a role in nuclear retention of defective RNAs.
関連疾患	Defects in MATR3 are the cause of myopathy distal type 2 (MPD2) [MIM:606070]; also called vocal cord and pharyngeal dysfunction with distal myopathy (VCPDM). MPD2 is a muscular disorder characterized by distal weakness, with onset in hands and feet, associated with vocal cord and pharyngeal weakness causing a nasal voice and swallowing disorders.
配列類似性	Contains 1 matrin-type zinc finger. Contains 2 RRM (RNA recognition motif) domains.
細胞内局在	Nucleus matrix.

## 画像



Western blot - Anti-Matrin 3 antibody [EPR10635(B)]  
(ab151714)

ab151714 was shown to react with MATR3 in wild-type HAP1 cells in Western blot with loss of signal observed in a MATR3 knockout cell line. Wild-type HAP1 and MATR3 knockout cell lysates were subjected to SDS-PAGE. Membranes were blocked in 5% milk in TBST for 1 hr before incubation with ab151714 overnight at 4 °C at a 1/10000 dilution. Blots were incubated with goat anti-rabbit HRP secondary antibodies at 0.2 µg/ml before imaging. These data were provided by YCharOS Inc., an open science company with the mission of characterizing commercially available antibody reagents for all human proteins. Abcam and YCharOS are working together to help address the reproducibility crisis by enabling the life science community to better evaluate commercially available antibodies.



Western blot - Anti-Matrin 3 antibody [EPR10635(B)]  
(ab151714)

**All lanes :** Anti-Matrin 3 antibody [EPR10635(B)] (ab151714) at 1/10000 dilution (purified)

**Lane 1 :** HEK-293 (Human epithelial cell line from embryonic kidney) whole cell lysate

**Lane 2 :** K562 (Human chronic myelogenous leukemia cell line from bone marrow) whole cell lysate

**Lane 3 :** HeLa (Human epithelial cell line from cervix adenocarcinoma) whole cell lysate

**Lane 4 :** Mouse brain tissue lysate

**Lane 5 :** Rat brain tissue lysate

Lysates/proteins at 20 µg per lane.

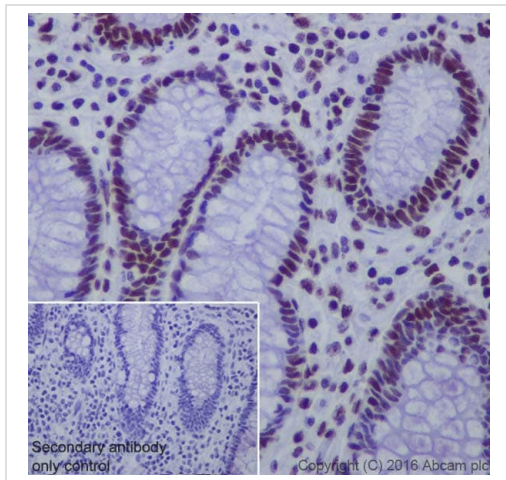
### Secondary

**All lanes :** Goat Anti-Rabbit IgG H&L (HRP) ([ab97051](#)) at 1/20000 dilution

**Predicted band size:** 95 kDa

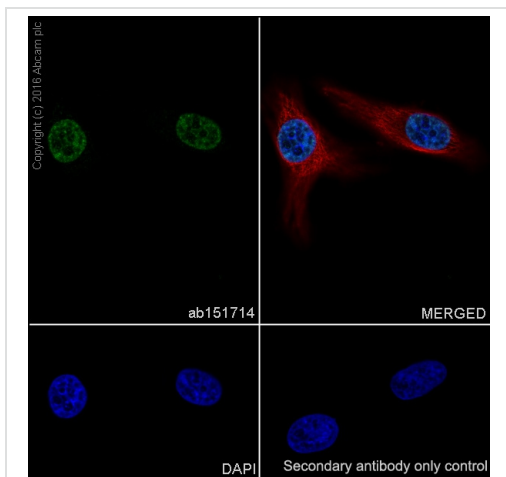
**Observed band size:** 125 kDa

Blocking/Diluting buffer 5% NFDM/TBST



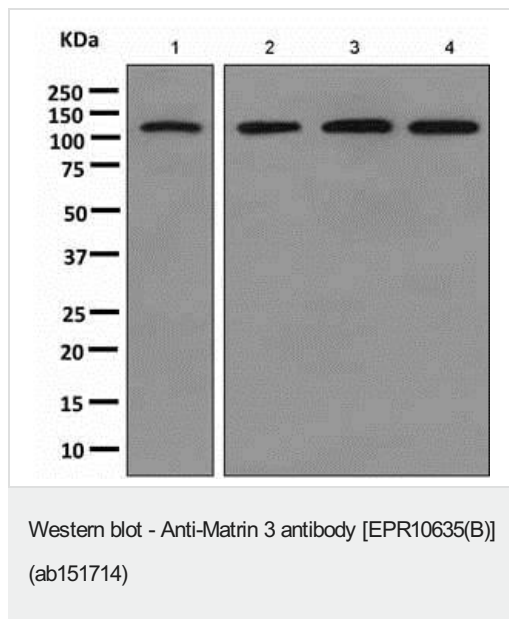
Immunohistochemistry (Formalin/PFA-fixed paraffin-embedded sections) - Anti-Matrin 3 antibody [EPR10635(B)] (ab151714)

Immunohistochemical analysis of paraffin-embedded human colon tissue sections labeling Matrin 3 with purified ab151714 at a dilution of 1/2000 (0.7 µg/ml). **ab97051** Goat Anti-Rabbit IgG H&L (HRP) at 1/500 was used as the secondary antibody. Sections were counterstained with hematoxylin. Antigen retrieval was heat mediated using citrate Buffer, pH 6.0. PBS was used instead of the primary antibody as the negative control and is shown in the inset.



Immunocytochemistry/ Immunofluorescence - Anti-Matrin 3 antibody [EPR10635(B)] (ab151714)

Immunocytochemistry/Immunofluorescence analysis of HeLa (Human epithelial cell line from cervix adenocarcinoma) cells labeling Matrin 3 with purified ab151714 at 1/500. Cells were fixed with 4% Paraformaldehyde and permeabilised with 0.1% tritonX-100. **ab150077**, Alexa Fluor® 488-conjugated goat anti-rabbit IgG (1/1000) was used as the secondary antibody. Cells were counterstained with **ab195889** Anti-Alpha Tubulin antibody [DM1A] (1/200, 2.5 µg/mL) - Microtubule Marker (Alexa Fluor® 594) at 1/200. DAPI (blue) was used as a nuclear counterstain. Secondary Only Control: PBS was used instead of the primary antibody as the negative control.



**All lanes :** Anti-Matrin 3 antibody [EPR10635(B)] (ab151714) at 1/1000 dilution (unpurified)

**Lane 1 :** HEK293T cell lysate

**Lane 2 :** K562 cell lysate

**Lane 3 :** HeLa cell lysate

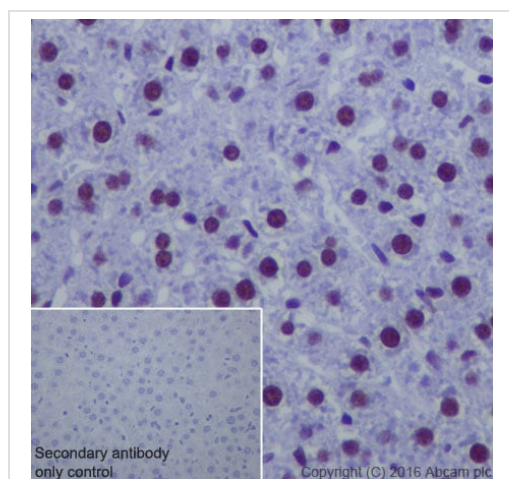
**Lane 4 :** HepG2 cell lysate

Lysates/proteins at 10 µg per lane.

#### Secondary

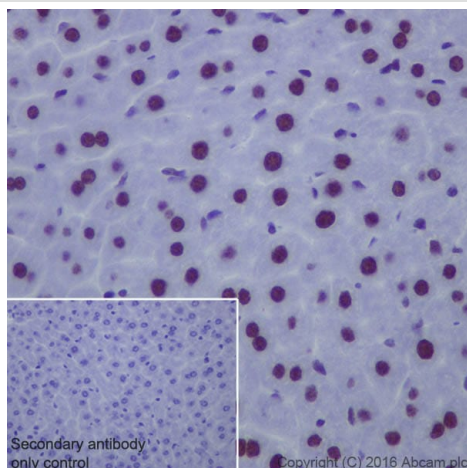
**All lanes :** Goat anti-rabbit HRP at 1/2000 dilution

**Predicted band size:** 95 kDa



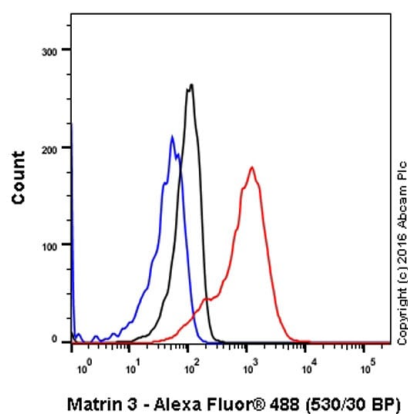
Immunohistochemical analysis of Paraffin-embedded rat liver tissue sections labeling Matrin 3 with purified ab151714 at a dilution of 1/2000 (0.7 µg/ml). **ab97051** Goat Anti-Rabbit IgG H&L (HRP) at 1/500 was used as the secondary antibody. Sections were counterstained with hematoxylin. Antigen retrieval was heat mediated using citrate Buffer, pH 6.0. PBS was used instead of the primary antibody as the negative control and is shown in the inset.

Immunohistochemistry (Formalin/PFA-fixed paraffin-embedded sections) - Anti-Matrin 3 antibody [EPR10635(B)] (ab151714)



Immunohistochemical analysis of paraffin-embedded mouse liver tissue sections labeling Matrin 3 with purified ab151714 at a dilution of 1/2000 (0.7 µg/ml). **ab97051** Goat Anti-Rabbit IgG H&L (HRP) at 1/500 was used as the secondary antibody. Sections were counterstained with hematoxylin. Antigen retrieval was heat mediated using citrate Buffer, pH 6.0. PBS was used instead of the primary antibody as the negative control and is shown in the inset.

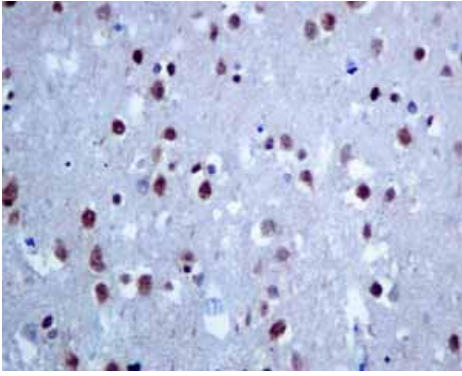
Immunohistochemistry (Formalin/PFA-fixed paraffin-embedded sections) - Anti-Matrin 3 antibody [EPR10635(B)] (ab151714)



Intracellular Flow Cytometry analysis of 4%paraformaldehyde fixedHepG2 (human hepatocellular carcinoma) cells labeling Matrin 3 with purified ab151714 at a dilution of 1/220. A goat anti rabbit IgG (Alexa Fluor® 488) at a dilution of 1/2000 was used as the secondary antibody.

Isootype control: Rabbit monoclonal IgG (Black)Unlabelled control: Cell without incubation with primary antibody and secondary antibody (Blue)

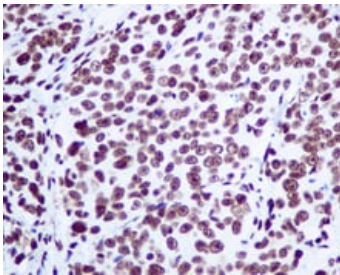
Flow Cytometry (Intracellular) - Anti-Matrin 3 antibody [EPR10635(B)] (ab151714)



Immunohistochemistry (Formalin/PFA-fixed paraffin-embedded sections) - Anti-Matrin 3 antibody [EPR10635(B)] (ab151714)

Immunohistochemical analysis of paraffin-embedded Human brain tissue labeling Matrin 3 with unpurified ab151714 at 1/250 dilution.

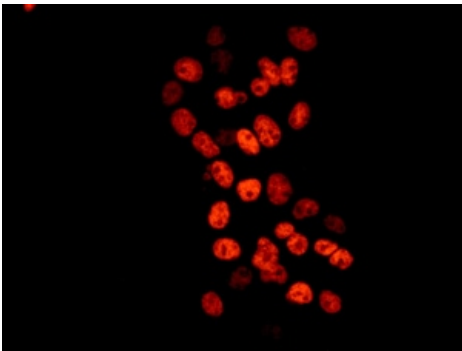
Perform heat mediated antigen retrieval with citrate buffer pH 6 before commencing with IHC staining protocol.



Immunohistochemistry (Formalin/PFA-fixed paraffin-embedded sections) - Anti-Matrin 3 antibody [EPR10635(B)] (ab151714)

Immunohistochemical analysis of paraffin-embedded Human breast carcinoma tissue labeling Matrin 3 with unpurified ab151714 at 1/250 dilution.

Perform heat mediated antigen retrieval with citrate buffer pH 6 before commencing with IHC staining protocol.



Immunocytochemistry/ Immunofluorescence - Anti-Matrin 3 antibody [EPR10635(B)] (ab151714)

Immunofluorescent analysis of HepG2 cells labeling Matrin 3 with unpurified ab151714 at 1/250 dilution.

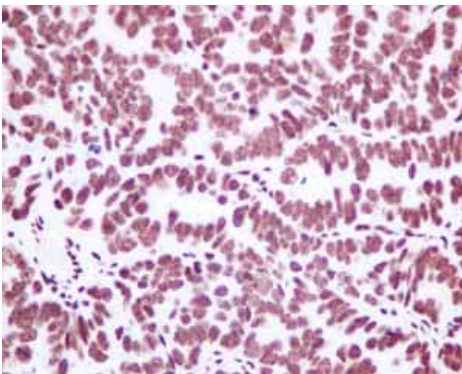




Immunohistochemistry (Formalin/PFA-fixed paraffin-embedded sections) - Anti-Matrin 3 antibody [EPR10635(B)] (ab151714)

Immunohistochemical analysis of paraffin embedded normal Human uterus tissue using unpurified ab151714 showing +ve staining.

Perform heat mediated antigen retrieval with citrate buffer pH 6 before commencing with IHC staining protocol.

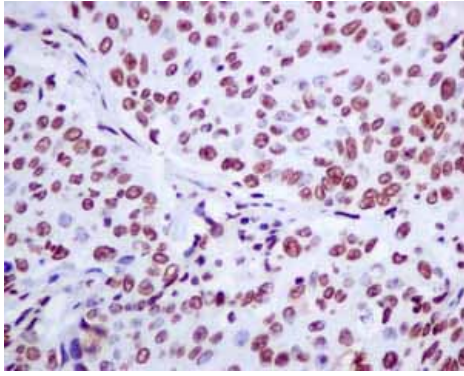


Immunohistochemistry (Formalin/PFA-fixed paraffin-embedded sections) - Anti-Matrin 3 antibody [EPR10635(B)] (ab151714)

Immunohistochemical analysis of paraffin embedded Human Ovarian carcinoma tissue using unpurified ab151714 showing +ve staining.

Perform heat mediated antigen retrieval with citrate buffer pH 6 before commencing with IHC staining protocol.



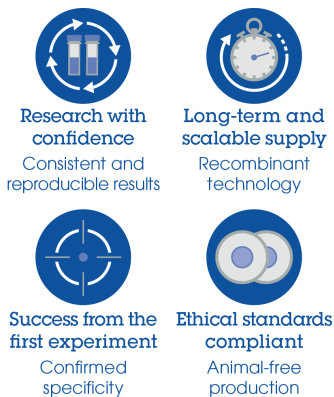


Immunohistochemical analysis of paraffin embedded Human Lung carcinoma tissue using unpurified ab151714 showing +ve staining.

Perform heat mediated antigen retrieval with citrate buffer pH 6 before commencing with IHC staining protocol.

Immunohistochemistry (Formalin/PFA-fixed paraffin-embedded sections) - Anti-Matrin 3 antibody [EPR10635(B)] (ab151714)

### Why choose a recombinant antibody?



Anti-Matrin 3 antibody [EPR10635(B)] (ab151714)

**Please note:** All products are "FOR RESEARCH USE ONLY. NOT FOR USE IN DIAGNOSTIC PROCEDURES"

### Our Abpromise to you: Quality guaranteed and expert technical support

- Replacement or refund for products not performing as stated on the datasheet
- Valid for 12 months from date of delivery
- Response to your inquiry within 24 hours
- We provide support in Chinese, English, French, German, Japanese and Spanish
- Extensive multi-media technical resources to help you
- We investigate all quality concerns to ensure our products perform to the highest standards

If the product does not perform as described on this datasheet, we will offer a refund or replacement. For full details of the Abpromise, please visit <https://www.abcam.co.jp/abpromise> or contact our technical team.

### Terms and conditions

- Guarantee only valid for products bought direct from Abcam or one of our authorized distributors