


### Anti-Mast Cell Chymase antibody [CC1] ab2377

★★★★★ **3 Abreviews**   **30 References**   画像数 **2**

#### 製品の概要

製品名	Anti-Mast Cell Chymase antibody [CC1]
製品の詳細	Mouse monoclonal [CC1] to Mast Cell Chymase
由来種	Mouse
アプリケーション	<b>適用あり:</b> IHC-P <b>適用なし:</b> WB
種交差性	<b>交差種:</b> Human <b>交差が予測される動物種:</b> Rat, Pig 
免疫原	Full length native protein (purified). This information is proprietary to Abcam and/or its suppliers.
ポジティブ・コントロール	Tonsil. IHC-P: FFPE human tonsil tissue sections.
特記事項	<p>Mast cells contain a number of preformed chemicals mediators such as histamine, chymase, carboxypeptidase and proteolytic tryptase. Human Mast Cell Chymase is considered to be an important marker of mast cells as well as an important mediator of inflammation.</p> <p>This antibody clone is manufactured by Abcam. If you require a custom buffer formulation or conjugation for your experiments, please contact <a href="mailto:orders@abcam.com">orders@abcam.com</a>.</p> <p>The Life Science industry has been in the grips of a reproducibility crisis for a number of years. Abcam is leading the way in addressing this with our range of recombinant monoclonal antibodies and knockout edited cell lines for gold-standard validation. Please check that this product meets your needs before purchasing.</p> <p>If you have any questions, special requirements or concerns, please send us an inquiry and/or contact our Support team ahead of purchase. Recommended alternatives for this product can be found below, along with publications, customer reviews and Q&amp;As</p>

#### 製品の特性

製品の状態	Liquid
保存方法	Shipped at 4°C. Store at +4°C short term (1-2 weeks). Store at -20°C or -80°C. Avoid freeze / thaw cycle.
バッファー	<p>pH: 7.40</p> <p>Preservative: 0.02% Sodium azide</p> <p>Constituents: PBS, 6.97% L-Arginine</p>

精製度	Protein G purified
一次抗体 備考	Mast cells contain a number of preformed chemicals mediators such as histamine, chymase, carboxypeptidase and proteolytic tryptase. Human Mast Cell Chymase is considered to be an important marker of mast cells as well as an important mediator of inflammation.
ポリ/モノ	モノクローナル
クローン名	CC1
ミエローマ	unknown
アイソタイプ	IgG1
軽鎖の種類	unknown

## アプリケーション

The Abpromise guarantee      Abpromise保証は、次のテスト済みアプリケーションにおけるab2377の使用に適用されます  
 アプリケーションノートには、推奨の開始希釈率がありますが、適切な希釈率につきましてはご検討ください。

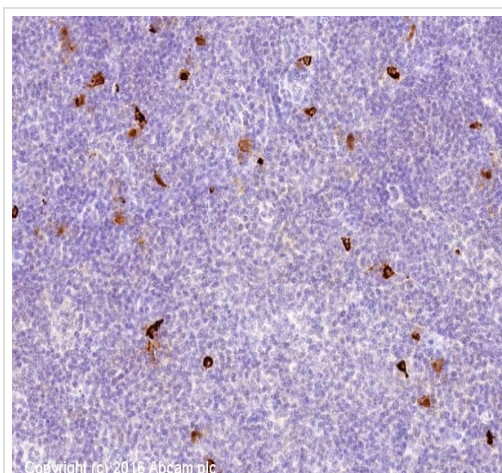
アプリケーション	Abreviews	特記事項
IHC-P	★ ★ ★ ★ ★ (2)	Use a concentration of 0.2 µg/ml. Perform heat mediated antigen retrieval with citrate buffer pH 6 before commencing with IHC staining protocol.

追加情報      Is unsuitable for WB.

## ターゲット情報

機能	Major secreted protease of mast cells with suspected roles in vasoactive peptide generation, extracellular matrix degradation, and regulation of gland secretion.
組織特異性	Mast cells in lung, heart, skin and placenta. Expressed in both normal skin and in urticaria pigmentosa lesions.
配列類似性	Belongs to the peptidase S1 family. Granzyme subfamily. Contains 1 peptidase S1 domain.
細胞内局在	Secreted. Cytoplasmic granule. Mast cell granules.

## 画像

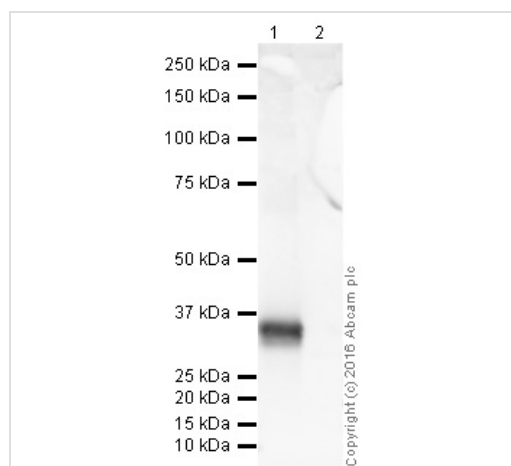


Immunohistochemistry (Formalin/PFA-fixed paraffin-embedded sections) - Anti-Mast Cell Chymase antibody [CC1] (ab2377)

IHC image of Mast Cell Chymase staining in human tonsil formalin fixed paraffin embedded tissue section\*, performed on a Leica Bond™ system using the standard protocol F. The section was pre-treated using heat mediated antigen retrieval with sodium citrate buffer (pH6, epitope retrieval solution 1) for 20 mins. The section was then incubated with ab2377, 0.2µg/ml, for 15 mins at room temperature and detected using an HRP conjugated compact polymer system. DAB was used as the chromogen. The section was then counterstained with haematoxylin and mounted with DPX.

For other IHC staining systems (automated and non-automated) customers should optimize variable parameters such as antigen retrieval conditions, primary antibody concentration and antibody incubation times.

*\*Tissue obtained from the Human Research Tissue Bank, supported by the NIHR Cambridge Biomedical Research Centre*



Western blot - Anti-Mast Cell Chymase antibody [CC1] (ab2377)

**All lanes** : Anti-Mast Cell Chymase antibody [CC1] (ab2377) at 1 µg/ml

**Lane 1** : Recombinant Human Chymase Protein

**Lane 2** : Recombinant Human Mast Cell Tryptase protein (denatured) ([ab134529](#))

Lysates/proteins at 0.1 µg per lane.

### Secondary

**All lanes** : Goat polyclonal to Mouse IgG - H&L - Pre-Adsorbed (HRP) at 1/5000 dilution

Developed using the ECL technique.

Performed under reducing conditions.

**Predicted band size:** 27 kDa

**Observed band size:** 35 kDa

**Exposure time:** 30 seconds

Ab2377 recognises recombinant human mast cell chymase.  
However, endogenous protein is not detected in WB due to low  
expression, therefore we do not guarantee this antibody in WB.

**Please note:** All products are "FOR RESEARCH USE ONLY. NOT FOR USE IN DIAGNOSTIC PROCEDURES"

#### **Our Abpromise to you: Quality guaranteed and expert technical support**

---

- Replacement or refund for products not performing as stated on the datasheet
- Valid for 12 months from date of delivery
- Response to your inquiry within 24 hours
- We provide support in Chinese, English, French, German, Japanese and Spanish
- Extensive multi-media technical resources to help you
- We investigate all quality concerns to ensure our products perform to the highest standards

If the product does not perform as described on this datasheet, we will offer a refund or replacement. For full details of the Abpromise, please visit <https://www.abcam.co.jp/abpromise> or contact our technical team.

#### **Terms and conditions**

---

- Guarantee only valid for products bought direct from Abcam or one of our authorized distributors