

Anti-Mast Cell Chymase antibody ab111239

★★★★★ [1 Abreviews](#) [7 References](#) [画像数 2](#)

製品の概要

製品名	Anti-Mast Cell Chymase antibody
製品の詳細	Goat polyclonal to Mast Cell Chymase
由来種	Goat
アプリケーション	適用あり: IHC-P
種交差性	交差種: Human
免疫原	Synthetic peptide corresponding to Human Mast Cell Chymase aa 50-150 (internal sequence) (Cysteine residue). Run BLAST with Expasy Run BLAST with NCBI
ポジティブ・コントロール	Human testis and tonsil tissue
特記事項	<p>The Life Science industry has been in the grips of a reproducibility crisis for a number of years. Abcam is leading the way in addressing this with our range of recombinant monoclonal antibodies and knockout edited cell lines for gold-standard validation. Please check that this product meets your needs before purchasing.</p> <p>If you have any questions, special requirements or concerns, please send us an inquiry and/or contact our Support team ahead of purchase. Recommended alternatives for this product can be found below, along with publications, customer reviews and Q&As</p>

製品の特性

製品の状態	Liquid
保存方法	Shipped at 4°C. Store at +4°C short term (1-2 weeks). Upon delivery aliquot. Store at -20°C long term.
バッファー	pH: 7.30 Preservative: 0.02% Sodium azide Constituents: Tris buffered saline, 0.5% BSA
精製度	Immunogen affinity purified
ポリ/モノ	ポリクローナル
アイソタイプ	IgG

アプリケーション

The Abpromise guarantee

Abpromise保証は、次のテスト済みアプリケーションにおけるab111239の使用に適用されます

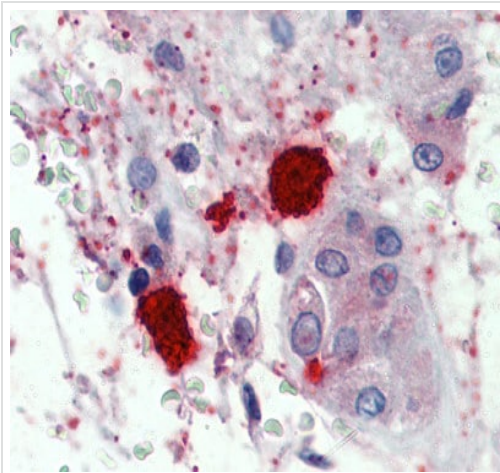
アプリケーションノートには、推奨の開始希釈率がありますが、適切な希釈率につきましてはご検討ください。

アプリケーション	Abreviews	特記事項
IHC-P		Use a concentration of 1.5 - 3.75 µg/ml. Perform heat mediated antigen retrieval with citrate buffer pH 6 before commencing with IHC staining protocol.

ターゲット情報

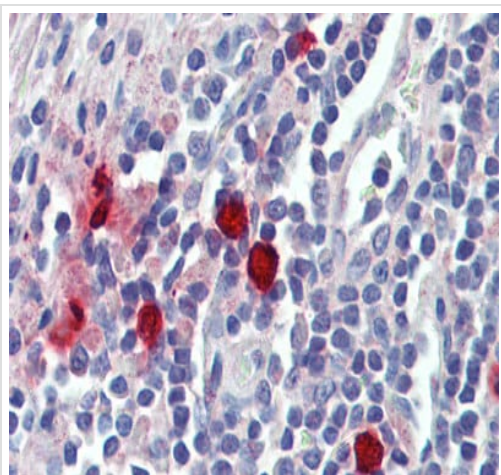
機能	Major secreted protease of mast cells with suspected roles in vasoactive peptide generation, extracellular matrix degradation, and regulation of gland secretion.
組織特異性	Mast cells in lung, heart, skin and placenta. Expressed in both normal skin and in urticaria pigmentosa lesions.
配列類似性	Belongs to the peptidase S1 family. Granzyme subfamily. Contains 1 peptidase S1 domain.
細胞内局在	Secreted. Cytoplasmic granule. Mast cell granules.

画像



ab111239, at 1.5 µg/ml, staining Mast Cell Chymase in formalin fixed, paraffin embedded Human testis tissue by Immunohistochemistry. Biotinylated secondary antibody, followed by alkaline phosphatase streptavidin and chromogen were used to develop staining.

Immunohistochemistry (Formalin/PFA-fixed paraffin-embedded sections) - Anti-Mast Cell Chymase antibody (ab111239)



Immunohistochemistry (Formalin/PFA-fixed paraffin-embedded sections) - Anti-Mast Cell Chymase antibody (ab111239)

ab111239, at 1.5 µg/ml, staining Mast Cell Chymase in formalin fixed, paraffin embedded Human tonsil tissue by Immunohistochemistry. Biotinylated secondary antibody, followed by alkaline phosphatase streptavidin and chromogen were used to develop staining.

Please note: All products are "FOR RESEARCH USE ONLY. NOT FOR USE IN DIAGNOSTIC PROCEDURES"

Our Abpromise to you: Quality guaranteed and expert technical support

- Replacement or refund for products not performing as stated on the datasheet
- Valid for 12 months from date of delivery
- Response to your inquiry within 24 hours
- We provide support in Chinese, English, French, German, Japanese and Spanish
- Extensive multi-media technical resources to help you
- We investigate all quality concerns to ensure our products perform to the highest standards

If the product does not perform as described on this datasheet, we will offer a refund or replacement. For full details of the Abpromise, please visit <https://www.abcam.co.jp/abpromise> or contact our technical team.

Terms and conditions

- Guarantee only valid for products bought direct from Abcam or one of our authorized distributors