

Anti-MASS1 antibody ab115621

画像数 2

製品の概要

製品名	Anti-MASS1 antibody
製品の詳細	Rabbit polyclonal to MASS1
由来種	Rabbit
アプリケーション	適用あり: IHC-P
種交差性	交差種: Human
免疫原	Synthetic peptide derived from the N terminal extracellular domain of Human MASS1.
ポジティブ・コントロール	Human Brain cortex and Lung (respiratory epithelium) tissues.
特記事項	<p>The Life Science industry has been in the grips of a reproducibility crisis for a number of years. Abcam is leading the way in addressing this with our range of recombinant monoclonal antibodies and knockout edited cell lines for gold-standard validation. Please check that this product meets your needs before purchasing.</p> <p>If you have any questions, special requirements or concerns, please send us an inquiry and/or contact our Support team ahead of purchase. Recommended alternatives for this product can be found below, along with publications, customer reviews and Q&As</p>

製品の特性

製品の状態	Liquid
保存方法	Shipped at 4°C. Store at -80°C.
バッファー	pH: 7.4 Preservative: 0.1% Sodium azide Constituent: 99% PBS
精製度	Protein A purified
ポリ/モノ	ポリクローナル
アイソタイプ	IgG

アプリケーション

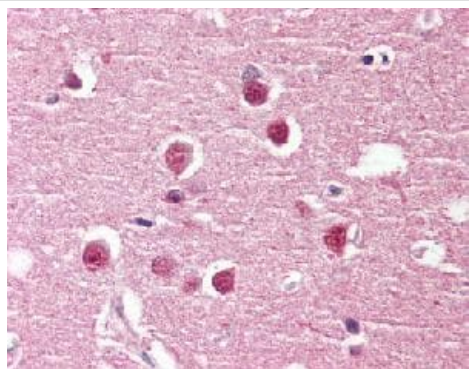
The Abpromise guarantee **Abpromise保証は、** 次のテスト済みアプリケーションにおけるab115621の使用に適用されます
アプリケーションノートには、推奨の開始希釈率がありますが、適切な希釈率につきましてはご検討ください。

アプリケーション	Abreviews	特記事項
IHC-P		Use a concentration of 5 - 10 µg/ml. Formalin-fixed Paraffin-embedded tissues requires pretreatment with Proteinase K.

ターゲット情報

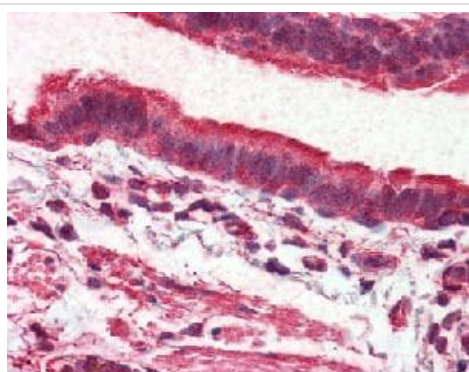
機能	Receptor that may have an important role in the development of the central nervous system.
組織特異性	Expressed at low levels in adult tissues.
関連疾患	<p>Defects in GPR98 are the cause of Usher syndrome type 2C (USH2C) [MIM:605472]. USH is a genetically heterogeneous condition characterized by the association of retinitis pigmentosa with sensorineural deafness. Age at onset and differences in auditory and vestibular function distinguish Usher syndrome type 1 (USH1), Usher syndrome type 2 (USH2) and Usher syndrome type 3 (USH3). USH2 is characterized by congenital mild hearing impairment with normal vestibular responses.</p> <p>Defects in GPR98 may be a cause of familial febrile convulsions type 4 (FEB4) [MIM:604352]; also known as familial febrile seizures 4. Febrile convulsions are seizures associated with febrile episodes in childhood without any evidence of intracranial infection or defined pathologic or traumatic cause. It is a common condition, affecting 2-5% of children aged 3 months to 5 years. The majority are simple febrile seizures (generally defined as generalized onset, single seizures with a duration of less than 30 minutes). Complex febrile seizures are characterized by focal onset, duration greater than 30 minutes, and/or more than one seizure in a 24 hour period. The likelihood of developing epilepsy following simple febrile seizures is low. Complex febrile seizures are associated with a moderately increased incidence of epilepsy.</p>
配列類似性	<p>Belongs to the G-protein coupled receptor 2 family. LN-TM7 subfamily.</p> <p>Contains 35 Calx-beta domains.</p> <p>Contains 6 EAR repeats.</p> <p>Contains 1 GPS domain.</p>
発生段階	Isoform 1 is 4 times more abundant than isoform 2 in most tissues tested, despite wide variations in absolute levels of expression. Isoform 3 is expressed at about 1.5 times isoform 1 levels in most tissues examined. In fetal testis, isoform 3 is expressed almost exclusively.
細胞内局在	Cell membrane.

画像



Immunohistochemistry (Formalin/PFA-fixed paraffin-embedded sections) - Anti-MASS1 antibody (ab115621)

ab115621, at 5-10µg/ml, staining MASS1 in Formalin-fixed, Paraffin-embedded Human Brain cortex tissue by Immunohistochemistry.



Immunohistochemistry (Formalin/PFA-fixed paraffin-embedded sections) - Anti-MASS1 antibody (ab115621)

ab115621, at 5-10µg/ml, staining MASS1 in Formalin-fixed, Paraffin-embedded Human lung, respiratory epithelium tissue by Immunohistochemistry.

Please note: All products are "FOR RESEARCH USE ONLY. NOT FOR USE IN DIAGNOSTIC PROCEDURES"

Our Abpromise to you: Quality guaranteed and expert technical support

- Replacement or refund for products not performing as stated on the datasheet
- Valid for 12 months from date of delivery
- Response to your inquiry within 24 hours
- We provide support in Chinese, English, French, German, Japanese and Spanish
- Extensive multi-media technical resources to help you
- We investigate all quality concerns to ensure our products perform to the highest standards

If the product does not perform as described on this datasheet, we will offer a refund or replacement. For full details of the Abpromise, please visit <https://www.abcam.co.jp/abpromise> or contact our technical team.

Terms and conditions

- Guarantee only valid for products bought direct from Abcam or one of our authorized distributors