


# Anti-MARK4 antibody ab124267

**2 References** [画像数 2](#)

### 製品の概要

製品名	Anti-MARK4 antibody
製品の詳細	Rabbit polyclonal to MARK4
由来種	Rabbit
アプリケーション	<b>適用あり:</b> IHC-P, ICC/IF
種交差性	<b>交差種:</b> Human <b>交差が予測される動物種:</b> Mouse 
免疫原	Synthetic peptide, corresponding to an internal region of Human MARK4, conjugated to KLH.
ポジティブ・コントロール	Human tonsil tissue; A549 cells
特記事項	<p>The Life Science industry has been in the grips of a reproducibility crisis for a number of years. Abcam is leading the way in addressing this with our range of recombinant monoclonal antibodies and knockout edited cell lines for gold-standard validation. Please check that this product meets your needs before purchasing.</p> <p>If you have any questions, special requirements or concerns, please send us an inquiry and/or contact our Support team ahead of purchase. Recommended alternatives for this product can be found below, along with publications, customer reviews and Q&amp;As</p>

### 製品の特性

製品の状態	Liquid
保存方法	Shipped at 4°C. Upon delivery aliquot and store at -20°C. Avoid repeated freeze / thaw cycles.
バッファー	<p>pH: 7.40</p> <p>Preservative: 0.02% Sodium azide</p> <p>Constituents: 0.88% Sodium chloride, 50% Glycerol (glycerin, glycerine), 49% PBS</p> <p>PBS is without Mg2+ and Ca2+</p>
精製度	Immunogen affinity purified
ポリ/モノ	ポリクローナル
アイソタイプ	IgG

### アプリケーション

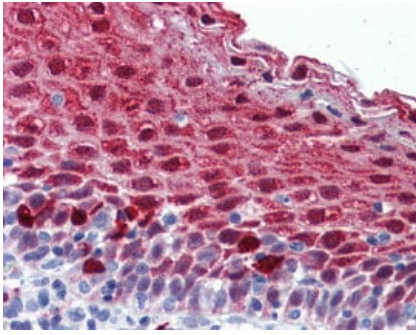
**The Abpromise guarantee**      **Abpromise保証は、**次のテスト済みアプリケーションにおけるab124267の使用に適用されます  
 アプリケーションノートには、推奨の開始希釈率がありますが、適切な希釈率につきましてはご確認ください。

アプリケーション	Abreviews	特記事項
IHC-P		Use a concentration of 10 µg/ml.
ICC/IF		1/100 - 1/500.

## ターゲット情報

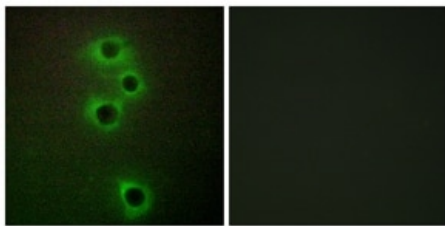
<b>機能</b>	Serine/threonine-protein kinase (PubMed:15009667, PubMed:14594945, PubMed:23666762, PubMed:23184942). Phosphorylates the microtubule-associated protein MAPT (PubMed:14594945, PubMed:23666762). Also phosphorylates the microtubule-associated proteins MAP2 and MAP4 (PubMed:14594945). Involved in regulation of the microtubule network, causing reorganization of microtubules into bundles (PubMed:14594945, PubMed:25123532). Required for the initiation of axoneme extension during cilium assembly (PubMed:23400999). Regulates the centrosomal location of ODF2 and phosphorylates ODF2 in vitro (PubMed:23400999). Plays a role in cell cycle progression, specifically in the G1/S checkpoint (PubMed:25123532). Reduces neuronal cell survival (PubMed:15009667). Plays a role in energy homeostasis by regulating satiety and metabolic rate (By similarity). Promotes adipogenesis by activating JNK1 and inhibiting the p38MAPK pathway, and triggers apoptosis by activating the JNK1 pathway (By similarity). Phosphorylates mTORC1 complex member RPTOR and acts as a negative regulator of the mTORC1 complex, probably due to disruption of the interaction between phosphorylated RPTOR and the RAGA/RRAGC heterodimer which is required for mTORC1 activation (PubMed:23184942).
<b>組織特異性</b>	Ubiquitous. Isoform 2 is brain-specific (PubMed:11326310). Expressed at highest levels in brain and testis. Also expressed in heart, lung, liver, muscle, kidney and spleen (PubMed:14594945).
<b>配列類似性</b>	Belongs to the protein kinase superfamily. CAMK Ser/Thr protein kinase family. SNF1 subfamily. Contains 1 KA1 (kinase-associated) domain. Contains 1 protein kinase domain. Contains 1 UBA domain.
<b>発生段階</b>	Expressed at all stages of the mitotic cell cycle.
<b>翻訳後修飾</b>	Ubiquitinated with 'Lys-29'- and 'Lys-33'-linked polyubiquitins which appear to impede LKB1-mediated phosphorylation. Deubiquitinated by USP9X. Phosphorylated at Thr-214 by STK11/LKB1 in complex with STE20-related adapter-alpha (STRADA) pseudo kinase and CAB39 (PubMed:14976552). Phosphorylated throughout the cell cycle (PubMed:25123532).
<b>細胞内局在</b>	Cytoplasm, cytoskeleton, microtubule organizing center, centrosome. Cytoplasm, cytoskeleton, microtubule organizing center. Cytoplasm, cytoskeleton, cilium basal body. Cytoplasm, cytoskeleton, cilium axoneme. Cytoplasm. Localized at the tips of neurite-like processes in differentiated neuroblast cells. Detected in the cytoplasm and neuropil of the hippocampus.

## 画像



Immunohistochemistry (Formalin/PFA-fixed paraffin-embedded sections) - Anti-MARK4 antibody (ab124267)

ab124267, at 10 µg/ml, staining MARK4 in formalin fixed, paraffin embedded Human tonsil tissue by immunohistochemistry.



Immunocytochemistry/ Immunofluorescence - Anti-MARK4 antibody (ab124267)

ab124267, at a 1/100 dilution, staining MARK4 in A549 cells by Immunofluorescence. The picture on the right is treated with the synthesized peptide.

**Please note:** All products are "FOR RESEARCH USE ONLY. NOT FOR USE IN DIAGNOSTIC PROCEDURES"

### Our Abpromise to you: Quality guaranteed and expert technical support

- Replacement or refund for products not performing as stated on the datasheet
- Valid for 12 months from date of delivery
- Response to your inquiry within 24 hours
- We provide support in Chinese, English, French, German, Japanese and Spanish
- Extensive multi-media technical resources to help you
- We investigate all quality concerns to ensure our products perform to the highest standards

If the product does not perform as described on this datasheet, we will offer a refund or replacement. For full details of the Abpromise, please visit <https://www.abcam.co.jp/abpromise> or contact our technical team.

### Terms and conditions

- Guarantee only valid for products bought direct from Abcam or one of our authorized distributors