

Anti-MARK 1+2+3+4 antibody ab74131

3 References [画像数 3](#)

製品の概要

製品名	Anti-MARK 1+2+3+4 antibody
製品の詳細	Rabbit polyclonal to MARK 1+2+3+4
由来種	Rabbit
アプリケーション	適用あり: WB, IHC-P, ICC/IF
種交差性	交差種: Human, African green monkey 交差が予測される動物種: Rat 
免疫原	Synthetic non-phosphopeptide derived from human MARK1/2/3/4 around the phosphorylation site of threonine 215 (L-D-T ^P -F-C).
特記事項	<p>The Life Science industry has been in the grips of a reproducibility crisis for a number of years. Abcam is leading the way in addressing this with our range of recombinant monoclonal antibodies and knockout edited cell lines for gold-standard validation. Please check that this product meets your needs before purchasing.</p> <p>If you have any questions, special requirements or concerns, please send us an inquiry and/or contact our Support team ahead of purchase. Recommended alternatives for this product can be found below, along with publications, customer reviews and Q&As</p>

製品の特性

製品の状態	Liquid
保存方法	Shipped at 4°C. Store at -20°C. Stable for 12 months at -20°C.
バッファー	pH: 7.40 Preservative: 0.02% Sodium azide Constituents: 50% Glycerol (glycerin, glycerine), 0.87% Sodium chloride, PBS
精製度	Without Mg ²⁺ and Ca ²⁺ Immunogen affinity purified
ポリ/モノ	ポリクローナル
アイソタイプ	IgG

アプリケーション

The Abpromise guarantee

Abpromise保証は、次のテスト済みアプリケーションにおけるab74131の使用に適用されます

アプリケーションノートには、推奨の開始希釈率がありますが、適切な希釈率につきましてはご検討ください。

アプリケーション	Abreviews	特記事項
WB		1/500 - 1/1000. Predicted molecular weight: 89 kDa.
IHC-P		1/50 - 1/100.
ICC/IF		1/100 - 1/500.

ターゲット情報

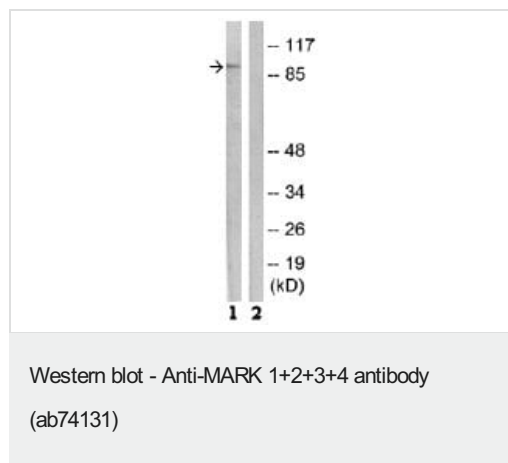
関連性

This complex of proteins may play a role in cytoskeletal stability, the control of cell polarity, microtubule stability and cancer.

細胞内局在

MARK1: Cytoplasmic, cytoskeleton. MARK2: Cell membrane; Peripheral membrane protein.

画像



All lanes : Anti-MARK 1+2+3+4 antibody (ab74131) at 1/500 dilution

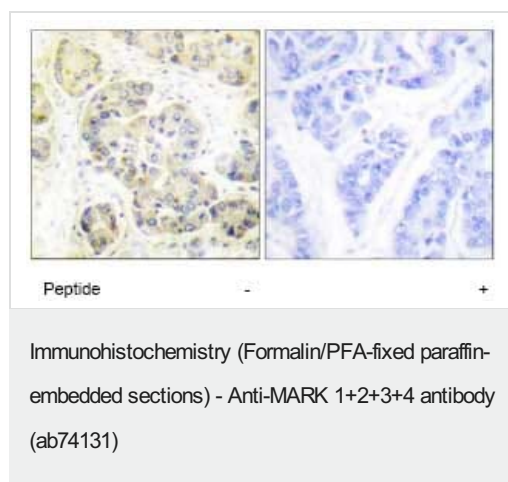
Lane 1 : Extracts from COS-7 cells

Lane 2 : Extracts from COS-7 cells with immunising peptide at 5 µg

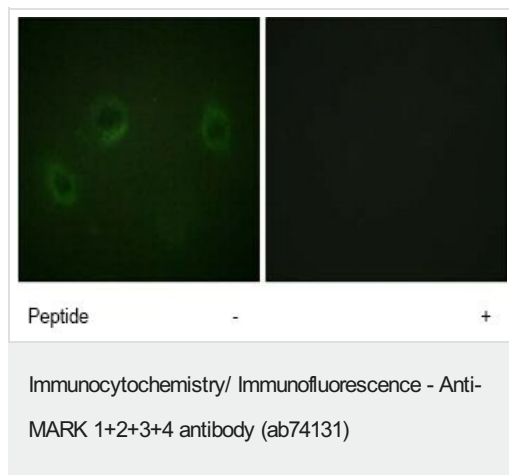
Lysates/proteins at 5 µg per lane.

Predicted band size: 89 kDa

Observed band size: 89 kDa



Immunohistochemical analysis of paraffin-embedded human breast carcinoma tissue using ab74131, at 1/50 dilution, in the presence (right panel) or absence (left panel) of immunising peptide.



Immunofluorescence analysis of HeLa cells, using ab74131 at 1/100 dilution, in the presence (right panel) or absence (left panel) of immunising peptide.

Please note: All products are "FOR RESEARCH USE ONLY. NOT FOR USE IN DIAGNOSTIC PROCEDURES"

Our Abpromise to you: Quality guaranteed and expert technical support

- Replacement or refund for products not performing as stated on the datasheet
- Valid for 12 months from date of delivery
- Response to your inquiry within 24 hours
- We provide support in Chinese, English, French, German, Japanese and Spanish
- Extensive multi-media technical resources to help you
- We investigate all quality concerns to ensure our products perform to the highest standards

If the product does not perform as described on this datasheet, we will offer a refund or replacement. For full details of the Abpromise, please visit <https://www.abcam.co.jp/abpromise> or contact our technical team.

Terms and conditions

- Guarantee only valid for products bought direct from Abcam or one of our authorized distributors