

### Anti-MAP2 antibody ab92434

★★★★★ [2 Abreviews](#) [45 References](#) [画像数 3](#)

#### 製品の概要

---

製品名	Anti-MAP2 antibody
製品の詳細	Chicken polyclonal to MAP2
由来種	Chicken
アプリケーション	<b>適用あり:</b> WB, ICC
種交差性	<b>交差種:</b> Rat, Human
免疫原	Recombinant full length protein corresponding to Cow MAP2. Recombinant bovine MAP2 protein expressed in and purified from E. Coli Database link: <a href="#">F1MEW3</a>

#### 特記事項

The Life Science industry has been in the grips of a reproducibility crisis for a number of years. Abcam is leading the way in addressing this with our range of recombinant monoclonal antibodies and knockout edited cell lines for gold-standard validation. Please check that this product meets your needs before purchasing.

If you have any questions, special requirements or concerns, please send us an inquiry and/or contact our Support team ahead of purchase. Recommended alternatives for this product can be found below, along with publications, customer reviews and Q&As

#### 製品の特性

---

製品の状態	Liquid
保存方法	Shipped at 4°C. Upon delivery aliquot and store at -20°C. Avoid repeated freeze / thaw cycles.
バッファー	Preservative: 0.065% Sodium azide
精製度	IgY fraction
ポリ/モノ	ポリクローナル
アイソタイプ	IgY

#### アプリケーション

---

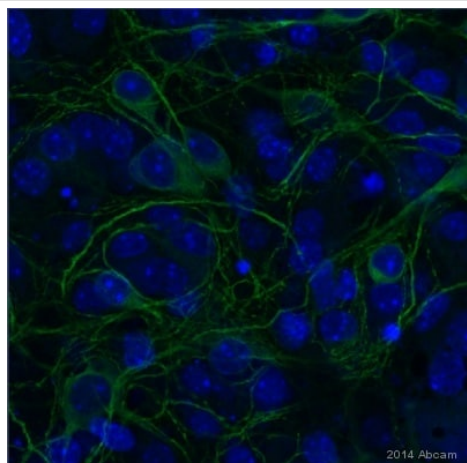
**The Abpromise guarantee**      **Abpromise保証は、次のテスト済みアプリケーションにおけるab92434の使用に適用されます**  
アプリケーションノートには、推奨の開始希釈率がありますが、適切な希釈率につきましてはご検討ください。

アプリケーション	Abreviews	特記事項
WB		1/20000. Predicted molecular weight: 280 kDa.
ICC	★★★★★ (1)	Use at an assay dependent concentration.

## ターゲット情報

機能	The exact function of MAP2 is unknown but MAPs may stabilize the microtubules against depolymerization. They also seem to have a stiffening effect on microtubules.
配列類似性	Contains 3 Tau/MAP repeats.
翻訳後修飾	Phosphorylated at serine residues in K-X-G-S motifs by MAP/microtubule affinity-regulating kinase (MARK1 or MARK2), causing detachment from microtubules, and their disassembly (By similarity). Isoform 2 is probably phosphorylated by PKA at Ser-323, Ser-354 and Ser-386 and by FYN at Tyr-67.
細胞内局在	Cytoplasm, cytoskeleton.

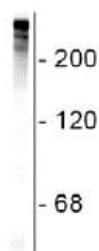
## 画像



Immunocytochemistry - Anti-MAP2 antibody (ab92434)

This image is courtesy of an Abreview submitted by Kirsty Ireland

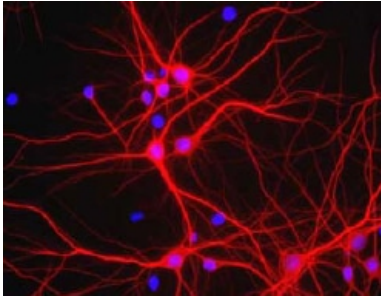
ab92434 staining MAP2 in mouse brain neurons by ICC/IF (Immunocytochemistry/immunofluorescence). Cells were fixed with paraformaldehyde and blocked with 5% serum for 1 hour at 20°C. Samples were incubated with primary antibody (1/2500 in PBS) for 24 hours at 4°C. **ab150169**, a goat **anti-chicken Alexa Fluor® 488** (1/500) was used as the secondary antibody.



Anti-MAP2 antibody (ab92434) at 1/20000 dilution + Rat cerebral cortex lysate

**Predicted band size: 280 kDa**

Western blot - Anti-MAP2 antibody (ab92434)



Immunocytochemistry - Anti-MAP2 antibody  
(ab92434)

ab92434 at 1/2500 dilution staining MAP2 in mixed neuron/glia cultures by Immunofluorescence. The perikarya and dendrites of neurons are strongly and specifically stained with the MAP2 antibody (red). Cell nuclei are visualized with DAPI DNA stain.

**Please note:** All products are "FOR RESEARCH USE ONLY. NOT FOR USE IN DIAGNOSTIC PROCEDURES"

### Our Abpromise to you: Quality guaranteed and expert technical support

---

- Replacement or refund for products not performing as stated on the datasheet
- Valid for 12 months from date of delivery
- Response to your inquiry within 24 hours
- We provide support in Chinese, English, French, German, Japanese and Spanish
- Extensive multi-media technical resources to help you
- We investigate all quality concerns to ensure our products perform to the highest standards

If the product does not perform as described on this datasheet, we will offer a refund or replacement. For full details of the Abpromise, please visit <https://www.abcam.co.jp/abpromise> or contact our technical team.

### Terms and conditions

---

- Guarantee only valid for products bought direct from Abcam or one of our authorized distributors