

Anti-Mammaglobin A antibody [31A5] ab82203

★☆☆☆☆ [1 Abreviews](#) [3 References](#) [画像数 2](#)

製品の概要

製品名	Anti-Mammaglobin A antibody [31A5]
製品の詳細	Rabbit monoclonal [31A5] to Mammaglobin A
由来種	Rabbit
アプリケーション	適用あり: WB, ELISA, IHC-P
種交差性	交差種: Mouse, Human, Monkey
免疫原	Recombinant full length protein corresponding to Human Mammaglobin A. Database link: Q13296
ポジティブ・コントロール	Breast carcinoma, skin (eccrine sweat glands).
特記事項	<p>The Life Science industry has been in the grips of a reproducibility crisis for a number of years. Abcam is leading the way in addressing this with our range of recombinant monoclonal antibodies and knockout edited cell lines for gold-standard validation. Please check that this product meets your needs before purchasing.</p> <p>If you have any questions, special requirements or concerns, please send us an inquiry and/or contact our Support team ahead of purchase. Recommended alternatives for this product can be found below, along with publications, customer reviews and Q&As</p>

製品の特性

製品の状態	Liquid
保存方法	Shipped at 4°C. Upon delivery aliquot and store at -20°C. Avoid freeze / thaw cycles.
バッファー	Preservative: 0.09% Sodium azide Constituents: PBS, 0.5% BSA
精製度	Affinity purified
ポリ/モノ	モノクローナル
クローン名	31A5
アイソタイプ	IgG

アプリケーション

The Abpromise guarantee Abpromise保証は、 次のテスト済みアプリケーションにおけるab82203の使用に適用されます

アプリケーションノートには、推奨の開始希釈率がありますが、適切な希釈率につきましてはご確認ください。

アプリケーション	Abreviews	特記事項
WB		Use at an assay dependent concentration.
ELISA		Use at an assay dependent concentration.
IHC-P	★☆☆☆☆ (1)	Use a concentration of 1 µg/ml. Perform heat mediated antigen retrieval via the pressure cooker method before commencing with IHC staining protocol.

ターゲット情報

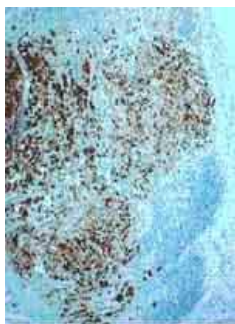
組織特異性

Mammary gland specific. Over-expressed in breast cancer.

配列類似性

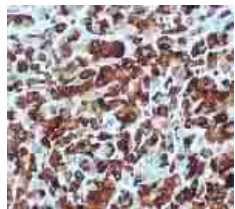
Belongs to the secretoglobin family. Lipophilin subfamily.

画像



ab82203 at 1µg/ml staining Mammaglobin A in sentinel lymph nodes in metastasis of breast carcinoma.

Immunohistochemistry (Formalin/PFA-fixed paraffin-embedded sections) - Anti-Mammaglobin A antibody [31A5] (ab82203)



ab82203 at 1µg/ml staining Mammaglobin A over-expression in breast carcinoma in situ.

Immunohistochemistry (Formalin/PFA-fixed paraffin-embedded sections) - Anti-Mammaglobin A antibody [31A5] (ab82203)

Please note: All products are "FOR RESEARCH USE ONLY. NOT FOR USE IN DIAGNOSTIC PROCEDURES"

Our Abpromise to you: Quality guaranteed and expert technical support

- Replacement or refund for products not performing as stated on the datasheet
- Valid for 12 months from date of delivery
- Response to your inquiry within 24 hours

- We provide support in Chinese, English, French, German, Japanese and Spanish
- Extensive multi-media technical resources to help you
- We investigate all quality concerns to ensure our products perform to the highest standards

If the product does not perform as described on this datasheet, we will offer a refund or replacement. For full details of the Abpromise, please visit <https://www.abcam.co.jp/abpromise> or contact our technical team.

Terms and conditions

- Guarantee only valid for products bought direct from Abcam or one of our authorized distributors