


Anti-MAML3 antibody ab90593

画像数 2

製品の概要

製品名	Anti-MAML3 antibody
製品の詳細	Rabbit polyclonal to MAML3
由来種	Rabbit
アプリケーション	適用あり: IHC-P
種交差性	交差種: Mouse, Human 交差が予測される動物種: Rat, Rabbit, Horse, Guinea pig, Cow, Dog, Pig, Chimpanzee, Rhesus monkey, Gorilla, Orangutan, Xenopus tropicalis, Platypus 
免疫原	Synthetic peptide, corresponding to a region between residue 1100 and the C-terminus (residue 1133) of Human MAML3 (NP_061187.2).
ポジティブ・コントロール	Human breast Carcinoma, Colon Carcinoma, Lung Adenocarcinoma, Non-Small Cell Lung Cancer, Prostate Carcinoma and Mouse Teratoma
特記事項	<p>The Life Science industry has been in the grips of a reproducibility crisis for a number of years. Abcam is leading the way in addressing this with our range of recombinant monoclonal antibodies and knockout edited cell lines for gold-standard validation. Please check that this product meets your needs before purchasing.</p> <p>If you have any questions, special requirements or concerns, please send us an inquiry and/or contact our Support team ahead of purchase. Recommended alternatives for this product can be found below, along with publications, customer reviews and Q&As</p>

製品の特性

製品の状態	Liquid
保存方法	Shipped at 4°C. Upon delivery aliquot and store at -20°C. Avoid freeze / thaw cycles.
バッファー	pH: 6.8 Preservative: 0.09% Sodium azide Constituents: Tris buffered saline, 0.1% BSA
精製度	Immunogen affinity purified
ポリ/モノ	ポリクローナル
アイソタイプ	IgG

アプリケーション

The Abpromise guarantee Abpromise保証は、次のテスト済みアプリケーションにおけるab90593の使用に適用されず
アプリケーションノートには、推奨の開始希釈率がありますが、適切な希釈率につきましてはご検討ください。

アプリケーション	Abreviews	特記事項
IHC-P		

追加情報

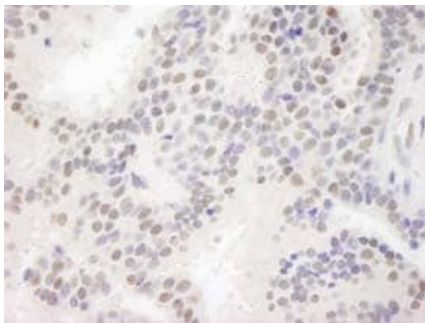
IHC-P: 1/100 - 1/500. Epitope exposure is recommended. Epitope exposure with Tris-EDTA pH 9.0 buffer will enhance staining.

Not yet tested in other applications.

Optimal dilutions/concentrations should be determined by the end user.

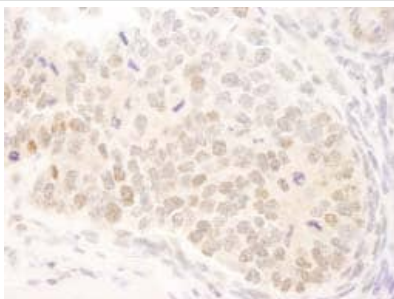
ターゲット情報

画像



Immunohistochemistry (Formalin/PFA-fixed paraffin-embedded sections) - Anti-MAML3 antibody (ab90593)

ab90593, at 1/500 dilution, staining MAML3 in formalin-fixed, paraffin-embedded Human breast carcinoma, by Immunohistochemistry, using DAB detection.



Immunohistochemistry (Formalin/PFA-fixed paraffin-embedded sections) - Anti-MAML3 antibody (ab90593)

ab90593, at 1/100 dilution, staining MAML3 in formalin-fixed, paraffin-embedded Mouse teratoma, by Immunohistochemistry, using DAB detection.

Please note: All products are "FOR RESEARCH USE ONLY. NOT FOR USE IN DIAGNOSTIC PROCEDURES"

Our Abpromise to you: Quality guaranteed and expert technical support

- Replacement or refund for products not performing as stated on the datasheet
- Valid for 12 months from date of delivery
- Response to your inquiry within 24 hours

- We provide support in Chinese, English, French, German, Japanese and Spanish
- Extensive multi-media technical resources to help you
- We investigate all quality concerns to ensure our products perform to the highest standards

If the product does not perform as described on this datasheet, we will offer a refund or replacement. For full details of the Abpromise, please visit <https://www.abcam.co.jp/abpromise> or contact our technical team.

Terms and conditions

- Guarantee only valid for products bought direct from Abcam or one of our authorized distributors