

Anti-MAMDC2 antibody ab121697

画像数 2

製品の概要

製品名	Anti-MAMDC2 antibody
製品の詳細	Rabbit polyclonal to MAMDC2
由来種	Rabbit
アプリケーション	適用あり: WB, IHC-P
種交差性	交差種: Human
免疫原	antigen, corresponding to amino acids 432-561 of Human MAMDC2
ポジティブ・コントロール	Human duodenum tissue
特記事項	<p>The Life Science industry has been in the grips of a reproducibility crisis for a number of years. Abcam is leading the way in addressing this with our range of recombinant monoclonal antibodies and knockout edited cell lines for gold-standard validation. Please check that this product meets your needs before purchasing.</p> <p>If you have any questions, special requirements or concerns, please send us an inquiry and/or contact our Support team ahead of purchase. Recommended alternatives for this product can be found below, along with publications, customer reviews and Q&As</p>

製品の特性

製品の状態	Liquid
保存方法	Shipped at 4°C. Upon delivery aliquot and store at -20°C. Avoid freeze / thaw cycles.
バッファー	pH: 7.20 Preservative: 0.02% Sodium azide Constituents: 59% PBS, 40% Glycerol
精製度	Immunogen affinity purified
ポリ/モノ	ポリクローナル
アイソタイプ	IgG

アプリケーション

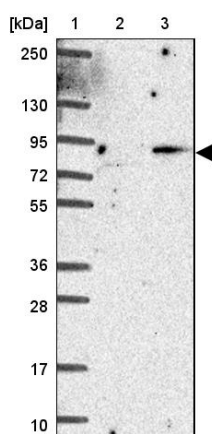
The Abpromise guarantee **Abpromise保証は、** 次のテスト済みアプリケーションにおけるab121697の使用に適用されます
アプリケーションノートには、推奨の開始希釈率がありますが、適切な希釈率につきましてはご検討ください。

アプリケーション	Abreviews	特記事項
WB		Use a concentration of 0.04 - 0.4 µg/ml.
IHC-P		1/10 - 1/20. Perform heat mediated antigen retrieval with citrate buffer pH 6 before commencing with IHC staining protocol. Use buffer at pH 6 for antigen retrieval.

ターゲット情報

配列類似性	Contains 4 MAM domains.
翻訳後修飾	O-glycosylated.
細胞内局在	Secreted > extracellular space > extracellular matrix.

画像



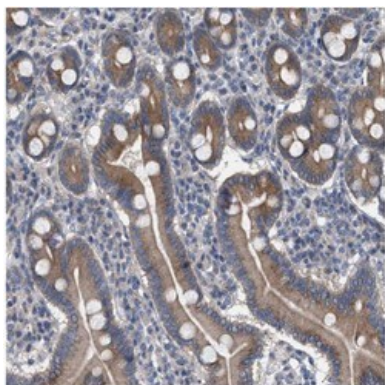
Western blot - Anti-MAMDC2 antibody (ab121697)

Lanes 2-3 : Anti-MAMDC2 antibody (ab121697)

Lane 1 : Marker

Lane 2 : HEK293T cell lysate - vector only transfected

Lane 3 : HEK293T cell lysate - overexpressing MAMDC2 with a C-terminal myc-DDK tag (~3.1kDa)



Immunohistochemistry (Formalin/PFA-fixed paraffin-embedded sections) - Anti-MAMDC2 antibody (ab121697)

Immunohistochemical staining of paraffin embedded Human duodenum, using 1/15 ab121697.

Please note: All products are "FOR RESEARCH USE ONLY. NOT FOR USE IN DIAGNOSTIC PROCEDURES"

Our Abpromise to you: Quality guaranteed and expert technical support

- Replacement or refund for products not performing as stated on the datasheet
- Valid for 12 months from date of delivery
- Response to your inquiry within 24 hours
- We provide support in Chinese, English, French, German, Japanese and Spanish
- Extensive multi-media technical resources to help you
- We investigate all quality concerns to ensure our products perform to the highest standards

If the product does not perform as described on this datasheet, we will offer a refund or replacement. For full details of the Abpromise, please visit <https://www.abcam.co.jp/abpromise> or contact our technical team.

Terms and conditions

- Guarantee only valid for products bought direct from Abcam or one of our authorized distributors