

# Anti-MAGED1/NRAGE antibody ab104627

画像数 1

### 製品の概要

|              |   |
|--------------|---|
| 製品名          | Anti-MAGED1/NRAGE antibody  |
| 製品の詳細        | Rabbit polyclonal to MAGED1/NRAGE   |
| 由来種          | Rabbit  |
| アプリケーション     | 適用あり: WB  |
| 種交差性         | 交差種: Rat<br>交差が予測される動物種: Human   |
| 免疫原          | Synthetic peptide corresponding to Mouse MAGED1/NRAGE aa 683-699 conjugated to keyhole limpet haemocyanin.<br>Sequence:<br>C-EAEARAEARNRMGIGDE<br><a href="#"> Run BLAST with</a> <a href="#"> Run BLAST with</a>   |
| ポジティブ・コントロール | PC12 cell extracts  |
| 特記事項         | <p>The Life Science industry has been in the grips of a reproducibility crisis for a number of years. Abcam is leading the way in addressing this with our range of recombinant monoclonal antibodies and knockout edited cell lines for gold-standard validation. Please check that this product meets your needs before purchasing.</p> <p>If you have any questions, special requirements or concerns, please send us an inquiry and/or contact our Support team ahead of purchase. Recommended alternatives for this product can be found below, along with publications, customer reviews and Q&amp;As</p> |

### 製品の特性

|        |  |
|--------|--|
| 製品の状態  | Liquid   |
| 保存方法   | Shipped at 4°C. Store at -20°C. Stable for 12 months at -20°C.   |
| バッファー  | pH: 7.40<br>Preservative: 0.02% Sodium azide<br>Constituents: 50% Glycerol (glycerin, glycerine), 0.87% Sodium chloride, PBS |
| 精製度    | Immunogen affinity purified  |
| ポリ/モノ  | ポリクローナル  |
| アイソタイプ | IgG  |

## アプリケーション

### The Abpromise guarantee

**Abpromise保証は、**次のテスト済みアプリケーションにおけるab104627の使用に適用されます

アプリケーションノートには、推奨の開始希釈率がありますが、適切な希釈率につきましてはご検討ください。

| アプリケーション | Abreviews | 特記事項  |
|----------|-----------|---|
| WB       |           | 1/500 - 1/1000. Predicted molecular weight: 86 kDa. |

## ターゲット情報

### 機能

Involved in the apoptotic response after nerve growth factor (NGF) binding in neuronal cells. Inhibits cell cycle progression, and facilitates NGFR-mediated apoptosis. May act as a regulator of the function of DLX family members. May enhance ubiquitin ligase activity of RING-type zinc finger-containing E3 ubiquitin-protein ligases. Proposed to act through recruitment and/or stabilization of the Ubl-conjugating enzyme (E2) at the E3:substrate complex. Plays a role in the circadian rhythm regulation. May act as RORA co-regulator, modulating the expression of core clock genes such as ARNTL/BMAL1 and NFIL3, induced, or NR1D1, repressed.

### 組織特異性

Expressed in bone marrow stromal cells from both multiple myeloma patients and healthy donors. Seems to be ubiquitously expressed.

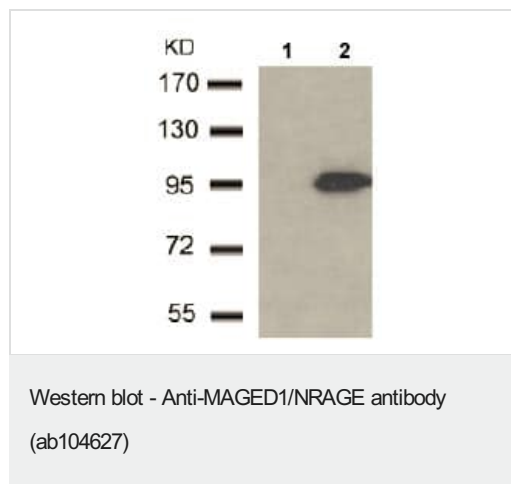
### 配列類似性

Contains 1 MAGE domain.

### 細胞内局在

Cytoplasm. Cell membrane. Nucleus. Expression shifts from the cytoplasm to the plasma membrane upon stimulation with NGF.

## 画像



**All lanes :** Anti-MAGED1/NRAGE antibody (ab104627) at 1/500 dilution

**Lane 1 :** PC12 cell extracts with MAGED1 blocking peptide

**Lane 2 :** PC12 cell extracts

**Predicted band size:** 86 kDa

**Please note:** All products are "FOR RESEARCH USE ONLY. NOT FOR USE IN DIAGNOSTIC PROCEDURES"

## Our Abpromise to you: Quality guaranteed and expert technical support

- Replacement or refund for products not performing as stated on the datasheet
- Valid for 12 months from date of delivery

- Response to your inquiry within 24 hours
- We provide support in Chinese, English, French, German, Japanese and Spanish
- Extensive multi-media technical resources to help you
- We investigate all quality concerns to ensure our products perform to the highest standards

If the product does not perform as described on this datasheet, we will offer a refund or replacement. For full details of the Abpromise, please visit <https://www.abcam.co.jp/abpromise> or contact our technical team.

#### **Terms and conditions**

---

- Guarantee only valid for products bought direct from Abcam or one of our authorized distributors