

Anti-Mael antibody ab106713

★☆☆☆☆ **1 Abreviews** **4 References** **画像数 3**

製品の概要

製品名	Anti-Mael antibody
製品の詳細	Rabbit polyclonal to Mael
由来種	Rabbit
アプリケーション	適用あり: WB, ICC, ICC/IF
種交差性	交差種: Human
免疫原	A 16 amino acid peptide near the C terminus of Human Mael (NP_065199).
ポジティブ・コントロール	Human skeletal muscle tissue; HeLa cell lysate
特記事項	<p>The Life Science industry has been in the grips of a reproducibility crisis for a number of years. Abcam is leading the way in addressing this with our range of recombinant monoclonal antibodies and knockout edited cell lines for gold-standard validation. Please check that this product meets your needs before purchasing.</p> <p>If you have any questions, special requirements or concerns, please send us an inquiry and/or contact our Support team ahead of purchase. Recommended alternatives for this product can be found below, along with publications, customer reviews and Q&As</p>

製品の特性

製品の状態	Liquid
保存方法	Shipped at 4°C. Store at 4°C (stable for up to 12 months).
バッファー	pH: 7.2 Preservative: 0.02% Sodium azide Constituent: PBS
精製度	Immunogen affinity purified
ポリ/モノ	ポリクローナル
アイソタイプ	IgG

アプリケーション

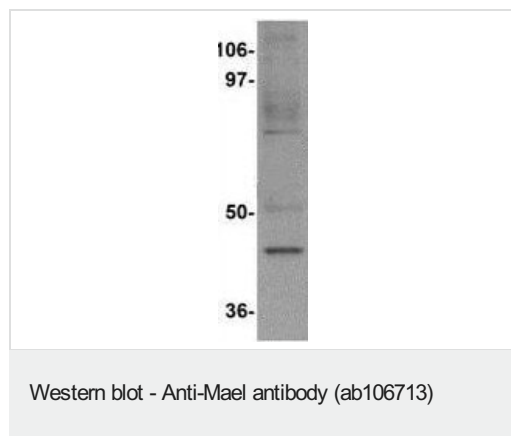
The Abpromise guarantee **Abpromise保証は、**次のテスト済みアプリケーションにおけるab106713の使用に適用されます
アプリケーションノートには、推奨の開始希釈率がありますが、適切な希釈率につきましてはご検討ください。

アプリケーション	Abreviews	特記事項
WB		Use a concentration of 1 - 2 µg/ml. Predicted molecular weight: 49 kDa.
ICC		Use a concentration of 5 µg/ml.
ICC/IF		Use a concentration of 20 µg/ml.

ターゲット情報

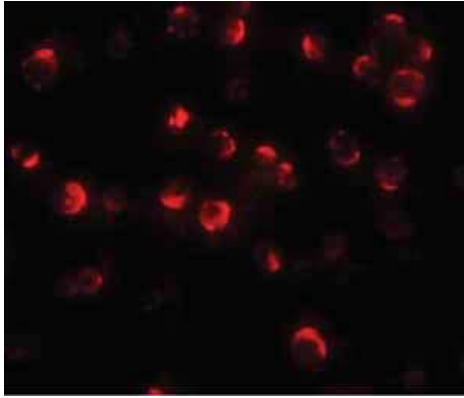
機能	Plays a central role during spermatogenesis by repressing transposable elements and prevent their mobilization, which is essential for the germline integrity. Acts via the piRNA metabolic process, which mediates the repression of transposable elements during meiosis by forming complexes composed of piRNAs and Piwi proteins and govern the methylation and subsequent repression of transposons. Its association with piP-bodies suggests a participation in the secondary piRNAs metabolic process. Required for localization of germ-cell factors to the meiotic nuage.
組織特異性	Testis-specific. Expressed in various cancer cell lines, probably due to demethylation of its promoter.
配列類似性	Belongs to the maelstrom family. Contains 1 HMG box DNA-binding domain.
細胞内局在	Cytoplasm. Nucleus. Component of the meiotic nuage, also named P granule, a germ-cell-specific organelle required to repress transposon during meiosis. Specifically localizes to piP-bodies, a subset of the nuage which contains secondary piRNAs.

画像



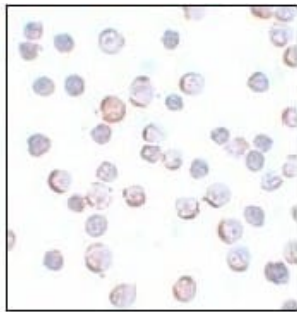
Anti-Mael antibody (ab106713) at 1 µg/ml + HeLa cell lysate at 15 µg

Predicted band size: 49 kDa



Immunofluorescence of Mael in HeLa cells with ab106713 at 20 µg/mL.

Immunocytochemistry/ Immunofluorescence - Anti-Mael antibody (ab106713)



ab106713, at 5 µg/ml, staining in HeLa cells with Maelstrom by Immunocytochemistry.

Immunocytochemistry - Anti-Mael antibody (ab106713)

Please note: All products are "FOR RESEARCH USE ONLY. NOT FOR USE IN DIAGNOSTIC PROCEDURES"

Our Abpromise to you: Quality guaranteed and expert technical support

- Replacement or refund for products not performing as stated on the datasheet
- Valid for 12 months from date of delivery
- Response to your inquiry within 24 hours
- We provide support in Chinese, English, French, German, Japanese and Spanish
- Extensive multi-media technical resources to help you
- We investigate all quality concerns to ensure our products perform to the highest standards

If the product does not perform as described on this datasheet, we will offer a refund or replacement. For full details of the Abpromise, please visit <https://www.abcam.co.jp/abpromise> or contact our technical team.

Terms and conditions

- Guarantee only valid for products bought direct from Abcam or one of our authorized distributors