




# Anti-Macrophage Inflammatory Protein 3 alpha antibody ab25123

**2 References**   **画像数 1**

### 製品の概要

製品名	Anti-Macrophage Inflammatory Protein 3 alpha antibody
製品の詳細	Rabbit polyclonal to Macrophage Inflammatory Protein 3 alpha
由来種	Rabbit
アプリケーション	<b>適用あり:</b> WB
免疫原	E.coli expressed recombinant fragment: MACKHLPFLA LAGVLLAYL CSQSEAASN FDCCLTYTK NVYHHARNF VGFTTQMAD EACDINAlI, corresponding to N terminal amino acids 1-70 of Rat Macrophage Inflammatory Protein 3 alpha  <b>Run BLAST with</b>  <b>Run BLAST with</b> 

### 特記事項

The Life Science industry has been in the grips of a reproducibility crisis for a number of years. Abcam is leading the way in addressing this with our range of recombinant monoclonal antibodies and knockout edited cell lines for gold-standard validation. Please check that this product meets your needs before purchasing.

If you have any questions, special requirements or concerns, please send us an inquiry and/or contact our Support team ahead of purchase. Recommended alternatives for this product can be found below, along with publications, customer reviews and Q&As

### 製品の特性

製品の状態	Liquid
保存方法	Shipped at 4°C. Store at +4°C short term (1-2 weeks). Upon delivery aliquot. Store at -20°C long term.
バッファー	pH: 7.20 Preservative: 0.1% Sodium azide Constituent: 99.9% PBS
精製度	Protein A purified
ポリ/モノ	ポリクローナル
アイソタイプ	IgG

### アプリケーション

The Abpromise guarantee

**Abpromise保証は、次のテスト済みアプリケーションにおけるab25123の使用に適用されます**

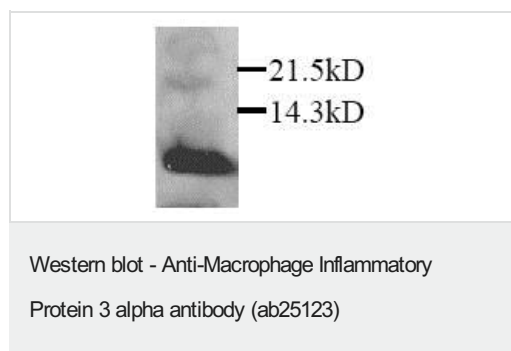
アプリケーションノートには、推奨の開始希釈率がありますが、適切な希釈率につきましてはご確認ください。

アプリケーション	Abreviews	特記事項
WB		1/2000. Predicted molecular weight: 11 kDa.

## ターゲット情報

機能	Chemotactic factor that attracts lymphocytes and, slightly, neutrophils, but not monocytes. Inhibits proliferation of myeloid progenitors in colony formation assays. May be involved in formation and function of the mucosal lymphoid tissues by attracting lymphocytes and dendritic cells towards epithelial cells. C-terminal processed forms have been shown to be equally chemotactically active for leukocytes. Possesses antibacterial activity E.coli ATCC 25922 and S.aureus ATCC 29213.
組織特異性	Expressed predominantly in the liver, lymph nodes, appendix, peripheral blood lymphocytes, and fetal lung. Low levels seen in thymus, prostate, testis, small intestine and colon.
配列類似性	Belongs to the intercrine beta (chemokine CC) family.
翻訳後修飾	C-terminal processed forms which lack 1, 3 or 6 amino acids are produced by proteolytic cleavage after secretion from peripheral blood monocytes.
細胞内局在	Secreted.

## 画像



Anti-Macrophage Inflammatory Protein 3 alpha antibody (ab25123)  
at 1/2000 dilution + Transient transfected cells.

**Predicted band size:** 11 kDa

**Please note:** All products are "FOR RESEARCH USE ONLY. NOT FOR USE IN DIAGNOSTIC PROCEDURES"

## Our Abpromise to you: Quality guaranteed and expert technical support

- Replacement or refund for products not performing as stated on the datasheet
- Valid for 12 months from date of delivery
- Response to your inquiry within 24 hours
- We provide support in Chinese, English, French, German, Japanese and Spanish
- Extensive multi-media technical resources to help you
- We investigate all quality concerns to ensure our products perform to the highest standards

If the product does not perform as described on this datasheet, we will offer a refund or replacement. For full details of the Abpromise,

please visit <https://www.abcam.co.jp/abpromise> or contact our technical team.

## **Terms and conditions**

---

- Guarantee only valid for products bought direct from Abcam or one of our authorized distributors