

### Anti-M-CSF antibody ab9693

★★★★★ [1 Abreviews](#) [20 References](#) [画像数 3](#)

#### 製品の概要

製品名	Anti-M-CSF antibody
製品の詳細	Rabbit polyclonal to M-CSF
由来種	Rabbit
アプリケーション	<b>適用あり:</b> WB, IHC-P, ELISA, Neutralising, Sandwich ELISA
種交差性	<b>交差種:</b> Human, Recombinant fragment
免疫原	Recombinant full length protein corresponding to Human M-CSF. Highly pure (>98%) recombinant hM-CSF (human M-CSF) Database link: <a href="#">P09603</a>
ポジティブ・コントロール	WB: Recombinant human M-CSF protein ( <a href="#">ab9694</a> ).
特記事項	This product is no longer batch tested in IHC, for an IHC validated antibody please see <a href="#">ab52864</a>  The Life Science industry has been in the grips of a reproducibility crisis for a number of years. Abcam is leading the way in addressing this with our range of recombinant monoclonal antibodies and knockout edited cell lines for gold-standard validation. Please check that this product meets your needs before purchasing.  If you have any questions, special requirements or concerns, please send us an inquiry and/or contact our Support team ahead of purchase. Recommended alternatives for this product can be found below, along with publications, customer reviews and Q&As

#### 製品の特性

製品の状態	Lyophilized:Reconstitute with 200µl of sterile water.
保存方法	Shipped at 4°C. Store at +4°C short term (1-2 weeks). Upon delivery aliquot. Store at -20°C long term.
バッファー	No preservative, sterile filtered
精製度	Immunogen affinity purified
ポリ/モノ	ポリクローナル
アイソタイプ	unknown
軽鎖の種類	unknown

**The Abpromise guarantee**      **Abpromise保証は、** 次のテスト済みアプリケーションにおけるab9693の使用に適用されます  
アプリケーションノートには、推奨の開始希釈率がありますが、適切な希釈率につきましてはご検討ください。

アプリケーション	Abreviews	特記事項
WB	★★★★★ (1)	Use at an assay dependent concentration. To detect hM-CSF by Western Blot analysis this antibody can be used at a concentration of 0.1 - 0.2 µg/ml. Used in conjunction with compatible secondary reagents the detection limit for recombinant hM-CSF is 1.5 - 3.0 ng/lane, under either reducing or non-reducing conditions.
IHC-P		Use at an assay dependent concentration.
ELISA		Use at an assay dependent concentration. To detect hM-CSF by direct ELISA (using 100µl/well antibody solution) a concentration of at least 0.5µg/ml of this antibody is required. This antigen affinity purified antibody, in conjunction with compatible secondary reagents, allows the detection of 0.2 - 0.4 ng/well of recombinant hM-CSF.
Neutralising		Use at an assay dependent concentration. To yield one-half maximal inhibition [ND50] of the biological activity of hM-CSF (7.0 ng/ml), a concentration of 0.02 - 0.03 µg/ml of this antibody is required.
Sandwich ELISA		Use a concentration of 0.1 µg/ml. To detect hM-CSF by sandwich ELISA (using 100 µl/well antibody solution) a concentration of 0.5 - 2.0 µg/ml of this antibody is required.

## ターゲット情報

機能	Granulocyte/macrophage colony-stimulating factors are cytokines that act in hematopoiesis by controlling the production, differentiation, and function of 2 related white cell populations of the blood, the granulocytes and the monocytes-macrophages. CSF-1 induces cells of the monocyte/macrophage lineage. It plays a role in immunological defenses, bone metabolism, lipoproteins clearance, fertility and pregnancy.
翻訳後修飾	Glycosylation and proteolytic cleavage yield different soluble forms. A high molecular weight soluble form is a proteoglycan containing chondroitin sulfate. Isoform 1 is N- and O-glycosylated. Isoform 3 is N-glycosylated.
細胞内局在	Cell membrane and Secreted > extracellular space.

## 画像



Western blot - Anti-M-CSF antibody (ab9693)

Anti-M-CSF antibody (ab9693) at 0.2 µg/ml + Recombinant human M-CSF protein (**ab9694**) at 0.01 µg

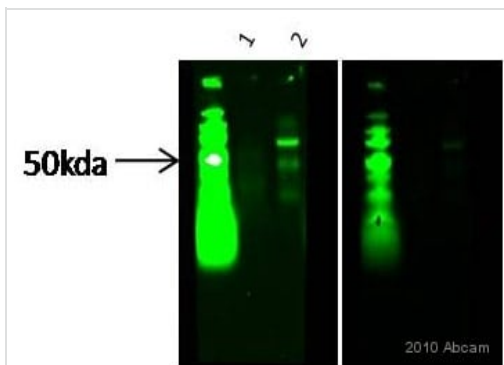
### Secondary

Goat Anti-Rabbit IgG H&L (HRP) preadsorbed (**ab97080**) at 1/5000 dilution

Developed using the ECL technique.

Performed under reducing conditions.

**Exposure time:** 1 minute



Western blot - Anti-M-CSF antibody (ab9693)

This image is courtesy of an Abreview submitted by Valentina Marcelli

**All lanes :** Anti-M-CSF antibody (ab9693) at 1/500 dilution (for 12 hours at 4°C)

**Lane 1 :** Human Kidney whole cell lysate

**Lane 2 :** Human Kidney whole cell lysate transfected with LFABP

Lysates/proteins at 15 µg per lane.

### Secondary

**All lanes :** An IRDye®800CW-conjugated Goat anti-rabbit IgG polyclonal at 1/15000 dilution

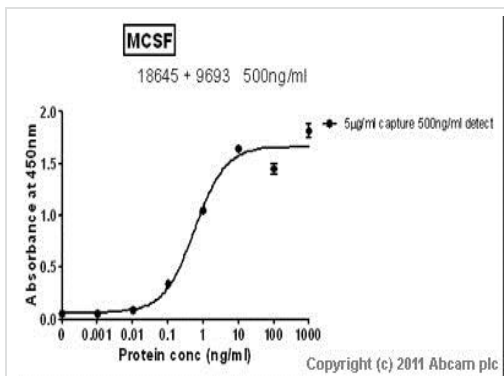
Performed under non-reducing conditions.

**Observed band size:** 70 kDa

**Blocking Step:** 5% BSA for 1 hour at 25°C

**Detection method:** Odyssey for 50 seconds.

**Right-hand Image:** Weaker exposure to identify bands.



Standard curve for MCSF (Analyte: **ab62015**); dilution range 1pg/ml to 1µg/ml using Capture Antibody Mouse monoclonal [21] to MCSF (**ab18645**) at 1µg/ml and Detector Antibody Rabbit polyclonal to MCSF (ab9693) at 0.1µg/ml.

Sandwich ELISA - Anti-M-CSF antibody (ab9693)

**Please note:** All products are "FOR RESEARCH USE ONLY. NOT FOR USE IN DIAGNOSTIC PROCEDURES"

### Our Abpromise to you: Quality guaranteed and expert technical support

- Replacement or refund for products not performing as stated on the datasheet
- Valid for 12 months from date of delivery
- Response to your inquiry within 24 hours
- We provide support in Chinese, English, French, German, Japanese and Spanish
- Extensive multi-media technical resources to help you
- We investigate all quality concerns to ensure our products perform to the highest standards

If the product does not perform as described on this datasheet, we will offer a refund or replacement. For full details of the Abpromise, please visit <https://www.abcam.co.jp/abpromise> or contact our technical team.

### Terms and conditions

- Guarantee only valid for products bought direct from Abcam or one of our authorized distributors