

### Anti-LYVE1 antibody ab36993

★★★★★ [3 Abreviews](#) [14 References](#) [画像数 7](#)

#### 製品の概要

製品名	Anti-LYVE1 antibody
製品の詳細	Rabbit polyclonal to LYVE1
由来種	Rabbit
アプリケーション	<b>適用あり:</b> WB, IHC-P, IHC-Fr, Flow Cyt
種交差性	<b>交差種:</b> Dog, Human, Recombinant fragment
免疫原	Recombinant fragment corresponding to Human LYVE1 aa 24-232. Recombinant human soluble LYVE1 fragment from insect cells ( <a href="#">ab54341</a> ). (Peptide available as <a href="#">ab54341</a> )
特記事項	<p>The Life Science industry has been in the grips of a reproducibility crisis for a number of years. Abcam is leading the way in addressing this with our range of recombinant monoclonal antibodies and knockout edited cell lines for gold-standard validation. Please check that this product meets your needs before purchasing.</p> <p>If you have any questions, special requirements or concerns, please send us an inquiry and/or contact our Support team ahead of purchase. Recommended alternatives for this product can be found below, along with publications, customer reviews and Q&amp;As</p>

#### 製品の特性

製品の状態	Lyophilized: Please reconstitute in sterile water to a concentration of 0.1-10mg/ml. When reconstituted the antibody is stable for at least two weeks at 2-8°C.
保存方法	Shipped at 4°C. Store at +4°C short term (1-2 weeks). Upon delivery aliquot. Store at -20°C. Avoid freeze / thaw cycle.
バッファー	Constituent: PBS
精製度	Immunogen affinity purified
ポリ/モノ	ポリクローナル
アイソタイプ	IgG

#### アプリケーション

The Abpromise guarantee

**Abpromise保証は、次のテスト済みアプリケーションにおけるab36993の使用に適用されます**

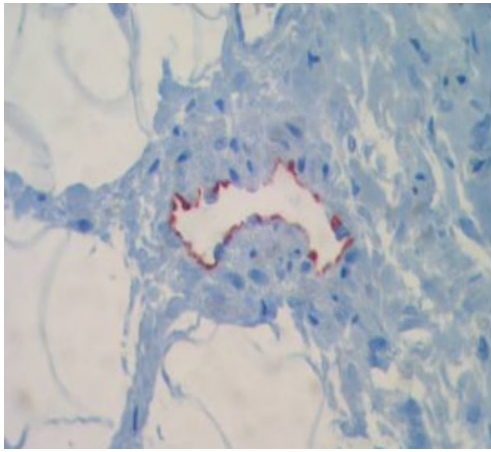
アプリケーションノートには、推奨の開始希釈率がありますが、適切な希釈率につきましてはご確認ください。

アプリケーション	Abreviews	特記事項
WB		Use a concentration of 1 - 2 µg/ml. Predicted molecular weight: 35 kDa.
IHC-P	★★★★★ (1)	Use a concentration of 6 - 30 µg/ml.
IHC-Fr	★★★★★ (1)	Use a concentration of 6 - 30 µg/ml.
Flow Cyt		Use a concentration of 3 - 10 µg/ml. <b>ab171870</b> - Rabbit polyclonal IgG, is suitable for use as an isotype control with this antibody.

## ターゲット情報

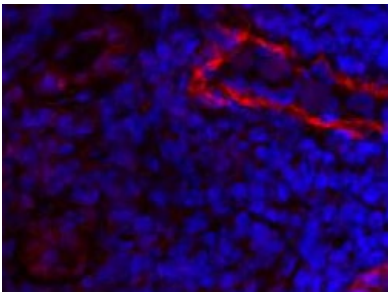
機能	Ligand-specific transporter trafficking between intracellular organelles (TGN) and the plasma membrane. Plays a role in autocrine regulation of cell growth mediated by growth regulators containing cell surface retention sequence binding (CRS). May act as a hyaluronan (HA) transporter, either mediating its uptake for catabolism within lymphatic endothelial cells themselves, or its transport into the lumen of afferent lymphatic vessels for subsequent re-uptake and degradation in lymph nodes.
組織特異性	Mainly expressed in endothelial cells lining lymphatic vessels.
配列類似性	Contains 1 Link domain.
翻訳後修飾	O-glycosylated.
細胞内局在	Membrane. Localized to the plasma membrane and in vesicles near extranuclear membranes which may represent trans-Golgi network (TGN) and endosomes/prelysosomal compartments. Undergoes ligand-dependent internalization and recycling at the cell surface.

## 画像



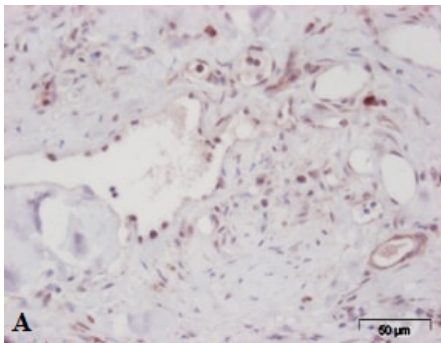
Immunohistochemistry (Formalin/PFA-fixed paraffin-embedded sections) - Anti-LYVE1 antibody (ab36993)

IHC with paraffin-embedded sections of human intestine (border area of a colon carcinoma) using antibody ab36993.



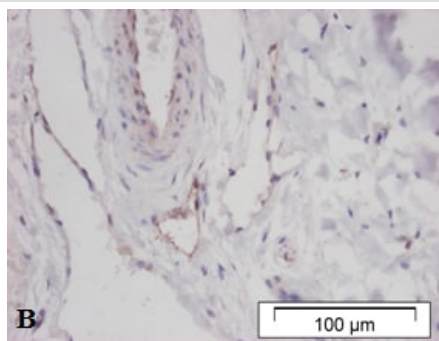
Immunohistochemistry (Frozen sections) - Anti-LYVE1 antibody (ab36993)

The staining was performed on frozen sections from human colon carcinoma using ab36993 (polyclonal anti-human LYVE-1 antibody; protein-A purified; 10 µg/ml).



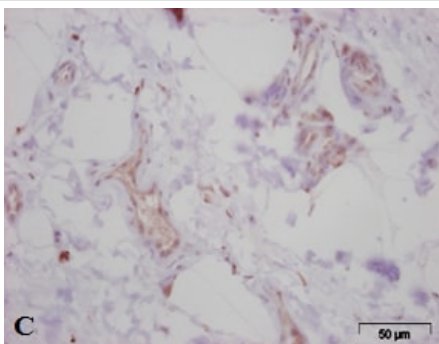
Immunohistochemistry (Formalin/PFA-fixed paraffin-embedded sections) - Anti-LYVE1 antibody (ab36993)

Immunohistochemistry (Formalin/PFA-fixed paraffin-embedded sections) analysis of lymphatic vessels of malignant canine mammary tumor tissue sections labelling LYVE1 with ab36993.



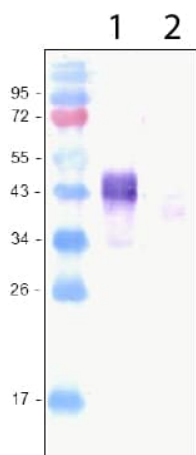
Immunohistochemistry (Formalin/PFA-fixed paraffin-embedded sections) - Anti-LYVE1 antibody (ab36993)

Immunohistochemistry (Formalin/PFA-fixed paraffin-embedded sections) analysis of lymphatic vessels of benign canine mammary tumor tissue sections labelling LYVE1 with ab36993.



Immunohistochemistry (Formalin/PFA-fixed paraffin-embedded sections) - Anti-LYVE1 antibody (ab36993)

Immunohistochemistry (Formalin/PFA-fixed paraffin-embedded sections) analysis of lymphatic vessels of normal canine mammary tissue sections labelling LYVE1 with ab36993.



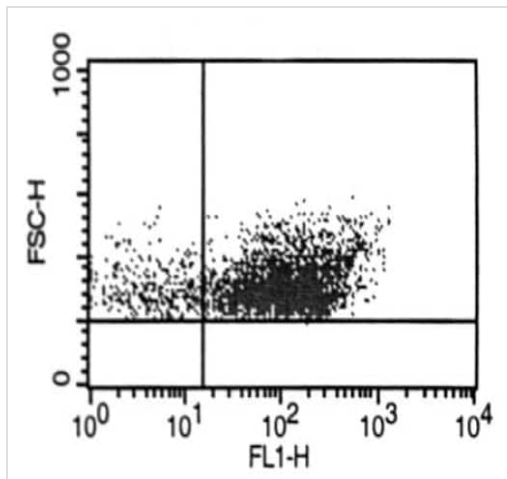
Western blot - Anti-LYVE1 antibody (ab36993)

**All lanes :** Anti-LYVE1 antibody (ab36993)

**Lane 1 :** Recombinant Human LYVE1 protein ([ab54341](#))

**Lane 2 :** Recombinant Mouse LYVE1 protein ([ab54342](#))

**Predicted band size:** 35 kDa



Flow Cytometry analysis of human dermal microvascular endothelial cells (HDMVEC) labelling LYVE1 with ab36993.

Flow Cytometry - Anti-LYVE1 antibody (ab36993)

**Please note:** All products are "FOR RESEARCH USE ONLY. NOT FOR USE IN DIAGNOSTIC PROCEDURES"

#### Our Abpromise to you: Quality guaranteed and expert technical support

---

- Replacement or refund for products not performing as stated on the datasheet
- Valid for 12 months from date of delivery
- Response to your inquiry within 24 hours
- We provide support in Chinese, English, French, German, Japanese and Spanish
- Extensive multi-media technical resources to help you
- We investigate all quality concerns to ensure our products perform to the highest standards

If the product does not perform as described on this datasheet, we will offer a refund or replacement. For full details of the Abpromise, please visit <https://www.abcam.co.jp/abpromise> or contact our technical team.

#### Terms and conditions

---

- Guarantee only valid for products bought direct from Abcam or one of our authorized distributors