


Anti-LYVE1 antibody ab10278

★★★★☆ [5 Abreviews](#) [13 References](#) [画像数 6](#)

製品の概要

製品名	Anti-LYVE1 antibody
製品の詳細	Rabbit polyclonal to LYVE1
由来種	Rabbit
アプリケーション	適用あり: IHC-Fr, Flow Cyt, IHC-P, WB
種交差性	交差種: Human 交差が予測される動物種: Rat 
免疫原	Recombinant fragment corresponding to Human LYVE1 aa 1-250. Recombinant human soluble LYVE1 fragment produced in insect cells (ab54341). Database link: Q9Y5Y7
ポジティブ・コントロール	human colon carcinoma
特記事項	<p>The Life Science industry has been in the grips of a reproducibility crisis for a number of years. Abcam is leading the way in addressing this with our range of recombinant monoclonal antibodies and knockout edited cell lines for gold-standard validation. Please check that this product meets your needs before purchasing.</p> <p>If you have any questions, special requirements or concerns, please send us an inquiry and/or contact our Support team ahead of purchase. Recommended alternatives for this product can be found below, along with publications, customer reviews and Q&As</p>

製品の特性

製品の状態	Liquid
保存方法	Shipped at 4°C. Store at +4°C short term (1-2 weeks). Upon delivery aliquot. Store at -20°C. Avoid freeze / thaw cycle.
バッファー	Constituent: PBS
精製度	Protein A purified
特記事項(精製)	Protein-A Chromatography (+his tag depleted).
一次抗体 備考	The lymphatic vasculature forms a second circulatory system that drains extracellular fluid from the tissues and provides an exclusive environment in which immune cells can encounter and respond to foreign antigen. Recently a number of interesting molecules have been identified that may be exploited as markers for lymphatic endothelium, including the hyaluronan receptor LYVE1, PALE, VEGFR3, podoplanin.

ポリモノ ポリクローナル
アイソタイプ IgG

アプリケーション

The Abpromise guarantee **Abpromise保証は、次のテスト済みアプリケーションにおけるab10278の使用に適用されず**
アプリケーションノートには、推奨の開始希釈率がありますが、適切な希釈率につきましてはご検討ください。

アプリケーション	Abreviews	特記事項
IHC-Fr	★★★★☆ (1)	Use a concentration of 6 - 30 µg/ml. Fix sections for 10 min at -20°C in MeOH.
Flow Cyt	★★★★☆ (1)	Use at an assay dependent concentration.
IHC-P	★★★★☆ (2)	Use a concentration of 2 µg/ml.
WB		Use a concentration of 1 - 2 µg/ml. Detects a band of approximately 35-45 kDa (predicted molecular weight: 35 kDa).

ターゲット情報

機能 Ligand-specific transporter trafficking between intracellular organelles (TGN) and the plasma membrane. Plays a role in autocrine regulation of cell growth mediated by growth regulators containing cell surface retention sequence binding (CRS). May act as a hyaluronan (HA) transporter, either mediating its uptake for catabolism within lymphatic endothelial cells themselves, or its transport into the lumen of afferent lymphatic vessels for subsequent re-uptake and degradation in lymph nodes.

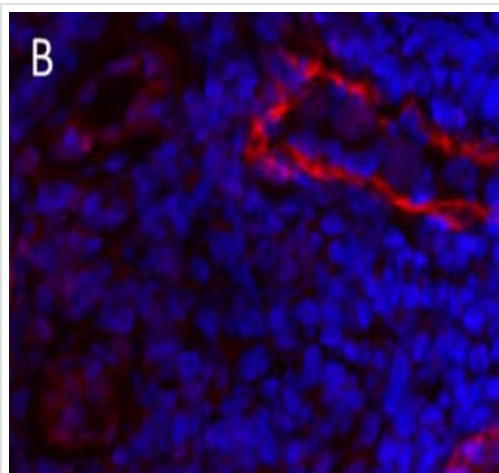
組織特異性 Mainly expressed in endothelial cells lining lymphatic vessels.

配列類似性 Contains 1 Link domain.

翻訳後修飾 O-glycosylated.

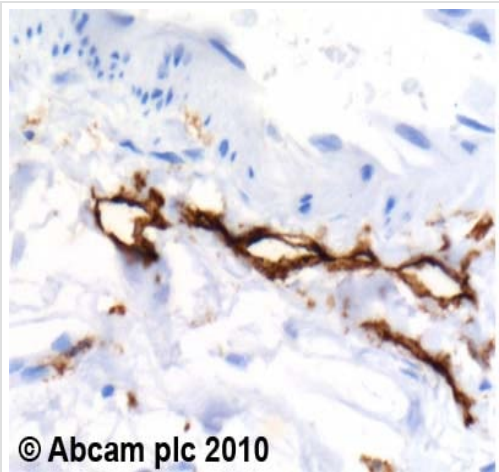
細胞内局在 Membrane. Localized to the plasma membrane and in vesicles near extranuclear membranes which may represent trans-Golgi network (TGN) and endosomes/prelysosomal compartments. Undergoes ligand-dependent internalization and recycling at the cell surface.

画像



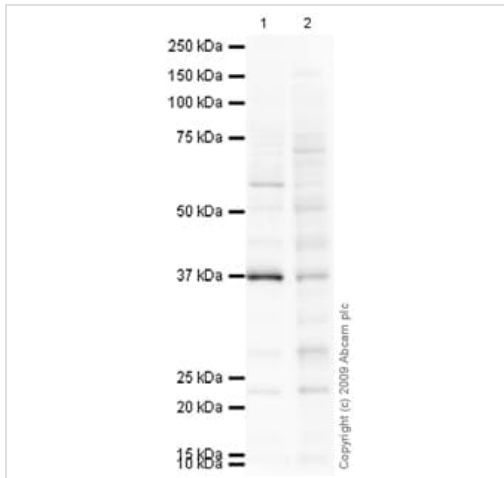
Immunohistochemistry (Frozen sections) - Anti-LYVE1 antibody (ab10278)

Immunohistochemistry (Frozen sections) analysis of human colon carcinoma tissue sections labelling LYVE1 with ab10278.



Immunohistochemistry (Formalin/PFA-fixed paraffin-embedded sections) - Anti-LYVE1 antibody (ab10278)

ab10278 (2µg/ml) staining LYVE1 in human colon using an automated system (DAKO Autostainer Plus). Using this protocol there is lymphatic endothelium staining of lymphatic ducts where blood vessel endothelium and smooth muscle is wholly negative. Sections were rehydrated and antigen retrieved with the Dako 3-in-1 AR buffer citrate pH 6.0 in a DAKO PT Link. Slides were peroxidase blocked in 3% H₂O₂ in methanol for 10 minutes. They were then blocked with Dako Protein block for 10 minutes (containing casein 0.25% in PBS) then incubated with primary antibody for 20 minutes and detected with Dako Envision Flex amplification kit for 30 minutes. Colorimetric detection was completed with Diaminobenzidine for 5 minutes. Slides were counterstained with Haematoxylin and coverslipped under DePeX. Please note that, for manual staining, optimization of primary antibody concentration and incubation time is recommended. Signal amplification may be required.



Western blot - Anti-LYVE1 antibody (ab10278)

All lanes : Anti-LYVE1 antibody (ab10278) at 1 $\mu\text{g/ml}$

Lane 1 : A549 (Human lung adenocarcinoma epithelial cell line)
Whole Cell Lysate

Lane 2 : HepG2 (Human hepatocellular liver carcinoma cell line)
Whole Cell Lysate

Lysates/proteins at 10 μg per lane.

Secondary

All lanes : Goat polyclonal to Rabbit IgG - H&L - Pre-Adsorbed (HRP) at 1/3000 dilution

Developed using the ECL technique.

Performed under reducing conditions.

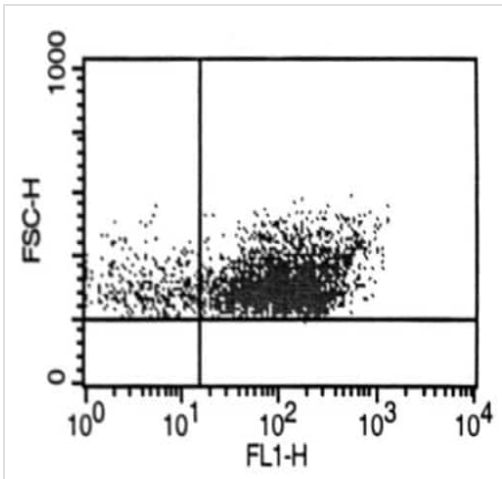
Predicted band size: 35 kDa

Observed band size: 37 kDa

Additional bands at: 22 kDa, 55 kDa. We are unsure as to the identity of these extra bands.

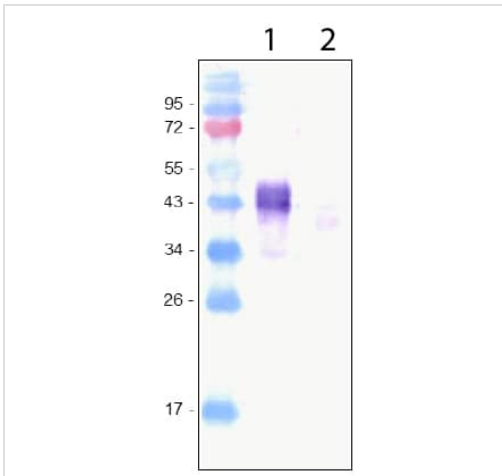
Exposure time: 4 minutes

LYVE-1 contains a number of potential glycosylation sites (SwissProt) which may explain its migration at a higher molecular weight than predicted.



Flow Cytometry - Anti-LYVE1 antibody (ab10278)

Flow Cytometry analysis of human dermal microvascular endothelial cells (HDMVEC) labelling LYVE1 with ab10278.



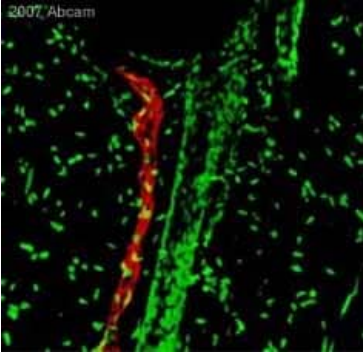
Western blot - Anti-LYVE1 antibody (ab10278)

All lanes : Anti-LYVE1 antibody (ab10278)

Lane 1 : Recombinant Human LYVE1 protein ([ab54341](#))

Lane 2 : Recombinant Mouse LYVE1 protein ([ab54342](#))

Predicted band size: 35 kDa



Immunohistochemistry (Frozen sections) - Anti-LYVE1 antibody (ab10278)

This image is courtesy of an Abreview submitted by Dr Vyacheslav Ogay

Rat skin was fixed with paraformaldehyde in 15% saturated picric acid solution for 4hr. Prior to sectioning, the specimen was infiltrated in O.C.T. and frozen in isopentane. The frozen specimen was sectioned these were rinsed in PBS for 15 min to remove O.C.T. and incubated in a 3% sodium deoxycholate solution. The specimens were rinsed twice with distilled water and then with PBS three times. The sections were incubated in 10% normal goat serum for 12 hr at 4°C, then for 12 hr with ab10278. After washing with PBS, the specimens were incubated with Alexa Fluor® 555-conjugated goat anti-rabbit IgG (H+L) (1:500), for 12 hr at 4°C. The cell nuclei were counterstained with YoYo-1. Images were obtained by using confocal microscope.

Please note: All products are "FOR RESEARCH USE ONLY. NOT FOR USE IN DIAGNOSTIC PROCEDURES"

Our Abpromise to you: Quality guaranteed and expert technical support

- Replacement or refund for products not performing as stated on the datasheet
- Valid for 12 months from date of delivery
- Response to your inquiry within 24 hours
- We provide support in Chinese, English, French, German, Japanese and Spanish
- Extensive multi-media technical resources to help you
- We investigate all quality concerns to ensure our products perform to the highest standards

If the product does not perform as described on this datasheet, we will offer a refund or replacement. For full details of the Abpromise, please visit <https://www.abcam.co.jp/abpromise> or contact our technical team.

Terms and conditions

- Guarantee only valid for products bought direct from Abcam or one of our authorized distributors