

Anti-LYST antibody [3H1] ab118121

画像数 1

製品の概要

| | |
|----------|--|
| 製品名 | Anti-LYST antibody [3H1] |
| 製品の詳細 | Mouse monoclonal [3H1] to LYST |
| 由来種 | Mouse |
| アプリケーション | 適用あり: Sandwich ELISA |
| 種交差性 | 交差種: Human |
| 免疫原 | Recombinant fragment, corresponding to amino acids 1-101 of Human LYST with proprietary tag (NP_000072). |
| 特記事項 | <p>This product was changed from ascites to tissue culture supernatant on 15 May 2019. Please note that the dilutions may need to be adjusted accordingly. If you have any questions, please do not hesitate to contact our scientific support team.</p> <p>The Life Science industry has been in the grips of a reproducibility crisis for a number of years. Abcam is leading the way in addressing this with our range of recombinant monoclonal antibodies and knockout edited cell lines for gold-standard validation. Please check that this product meets your needs before purchasing.</p> <p>If you have any questions, special requirements or concerns, please send us an inquiry and/or contact our Support team ahead of purchase. Recommended alternatives for this product can be found below, along with publications, customer reviews and Q&As</p> |

製品の特性

| | |
|----------|---|
| 製品の状態 | Liquid |
| 保存方法 | Shipped at 4°C. Upon delivery aliquot and store at -20°C or -80°C. Avoid repeated freeze / thaw cycles. |
| バッファー | pH: 7.4 Constituent: 99% PBS |
| 精製度 | Tissue culture supernatant |
| 特記事項(精製) | Purified from TCS. |
| ポリクローナル | モノクローナル |
| クローン名 | 3H1 |
| アイソタイプ | IgG2b |

アプリケーション

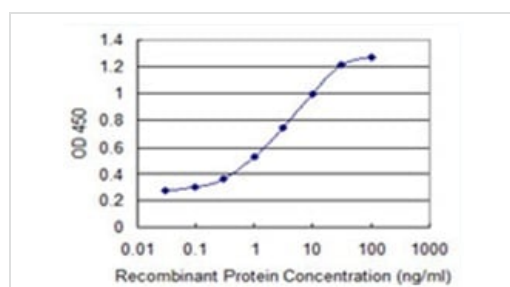
The Abpromise guarantee **Abpromise保証は、次のテスト済みアプリケーションにおけるab118121の使用に適用されず**
アプリケーションノートには、推奨の開始希釈率がありますが、適切な希釈率につきましてはご検討ください。

| アプリケーション | Abreviews | 特記事項 |
|----------------|-----------|--|
| Sandwich ELISA | | Use at an assay dependent concentration. |

ターゲット情報

| | |
|--------------|---|
| 機能 | May be required for sorting endosomal resident proteins into late multivesicular endosomes by a mechanism involving microtubules. |
| 組織特異性 | Abundantly expressed in adult and fetal thymus, peripheral blood leukocytes, bone marrow and several regions of the adult brain. |
| 関連疾患 | Defects in LYST are the cause of Chediak-Higashi syndrome (CHS) [MIM:214500]. CHS is a rare autosomal recessive disorder characterized by hypopigmentation, severe immunologic deficiency, a bleeding tendency, neurologic abnormalities, abnormal intracellular transport to and from the lysosome, and giant inclusion bodies in a variety of cell types. Most patients die at an early age unless they receive an allogeneic hematopoietic stem cell transplant (SCT). |
| 配列類似性 | Contains 1 BEACH domain. Contains 7 WD repeats. |
| 細胞内局在 | Cytoplasm. |

画像



Detection limit for recombinant tagged LYST is 0.03 ng/ml as a capture antibody.

This image was generated using the ascites version of the product.

Sandwich ELISA - Anti-LYST antibody [3H1]
(ab118121)

Please note: All products are "FOR RESEARCH USE ONLY. NOT FOR USE IN DIAGNOSTIC PROCEDURES"

Our Abpromise to you: Quality guaranteed and expert technical support

- Replacement or refund for products not performing as stated on the datasheet
- Valid for 12 months from date of delivery
- Response to your inquiry within 24 hours

- We provide support in Chinese, English, French, German, Japanese and Spanish
- Extensive multi-media technical resources to help you
- We investigate all quality concerns to ensure our products perform to the highest standards

If the product does not perform as described on this datasheet, we will offer a refund or replacement. For full details of the Abpromise, please visit <https://www.abcam.co.jp/abpromise> or contact our technical team.

Terms and conditions

- Guarantee only valid for products bought direct from Abcam or one of our authorized distributors