


Anti-Lyn (phospho Y507) antibody [EP504Y] ab33914

リコンビナント **RabMAb**

11 References **画像数 4**

製品の概要

製品名	Anti-Lyn (phospho Y507) antibody [EP504Y]
製品の詳細	Rabbit monoclonal [EP504Y] to Lyn (phospho Y507)
由来種	Rabbit
アプリケーション	適用あり: Dot blot, WB, IP 適用なし: Flow Cyt or ICC/IF
種交差性	交差種: Human 交差が予測される動物種: Mouse, Rat 
免疫原	Synthetic peptide within Human Lyn (phospho Y507). The exact sequence is proprietary. Database link: <u>P07948</u>
ポジティブ・コントロール	WB: HeLa (untreated and treated with pervanadate) and Raji treated with pervanadate whole cell lysates. IP: SH-SY5Y treated with pervanadate whole cell lysate.
特記事項	Our RabMAb [®] technology is a patented hybridoma-based technology for making rabbit monoclonal antibodies. For details on our patents, please refer to <u>RabMAb[®] patents</u> . The Life Science industry has been in the grips of a reproducibility crisis for a number of years. Abcam is leading the way in addressing this with our range of recombinant monoclonal antibodies and knockout edited cell lines for gold-standard validation. Please check that this product meets your needs before purchasing. If you have any questions, special requirements or concerns, please send us an inquiry and/or contact our Support team ahead of purchase. Recommended alternatives for this product can be found below, along with publications, customer reviews and Q&As

製品の特性

製品の状態	Liquid
保存方法	Shipped at 4°C. Upon delivery aliquot and store at -20°C. Avoid freeze / thaw cycles.
バッファー	pH: 7.20 Preservative: 0.01% Sodium azide Constituents: 59% PBS, 40% Glycerol (glycerin, glycerine), 0.5% BSA
精製度	Protein A purified

ポリ/モノ	モノクローナル
クローン名	EP504Y
アイソタイプ	IgG

アプリケーション

The Abpromise guarantee **Abpromise保証は、次のテスト済みアプリケーションにおけるab33914の使用に適用されます**
 アプリケーションノートには、推奨の開始希釈率がありますが、適切な希釈率につきましてはご確認ください。

アプリケーション	Abreviews	特記事項
Dot blot		1/1000.
WB		1/500 - 1/5000. Detects a band of approximately 53-56 kDa (predicted molecular weight: 61 kDa).
IP		1/80.

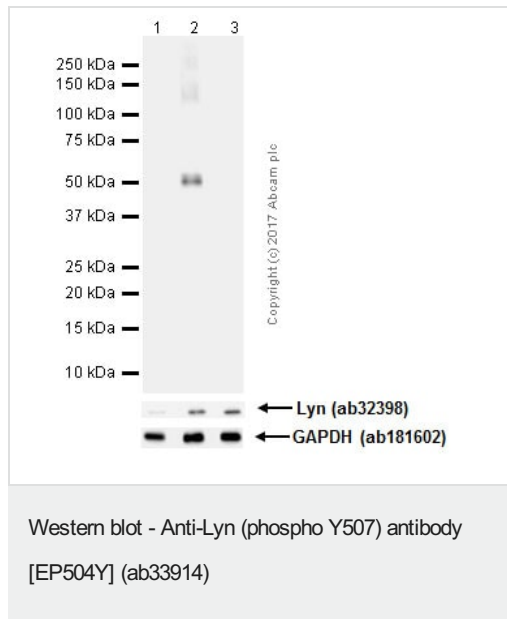
追加情報 Is unsuitable for Flow Cyt or ICC/IF.

ターゲット情報

機能	Down regulates expression of stem cell growth factor receptor (KIT). Acts as an effector of EpoR (erythropoietin receptor) in controlling KIT expression and may play a central role in erythroid differentiation during the switch between proliferation and maturation (By similarity). Acts as a positive regulator of cell movement while negatively regulating adhesion to stromal cells by inhibiting the ICAM-1-binding activity of beta-2 integrins. Acts as the mediator that relays suppressing signals from the chemokine receptor CXCR4 to beta-2 integrin LFA-1 in hematopoietic precursors. Involved in induction of stress-activated protein kinase (SAPK), but not ERK or p38 MAPK, in response to genotoxic agents. Induces SAPK by a MKK7- and MEKK1-dependent mechanism. The LYN -> MEKK1 -> MKK7 -> SAPK pathway is functional in the induction of apoptosis by genotoxic agents.
組織特異性	Widely expressed in a variety of organs, tissues, and cell types such as epidermoid, hematopoietic, and neuronal cells. Expressed in primary neuroblastoma tumors.
配列類似性	Belongs to the protein kinase superfamily. Tyr protein kinase family. SRC subfamily. Contains 1 protein kinase domain. Contains 1 SH2 domain. Contains 1 SH3 domain.
ドメイン	The protein kinase domain plays an important role in its localization in the cell membrane.
翻訳後修飾	Ubiquitinated. Ubiquitination is SH3-dependent.
細胞内局在	Cell membrane. Nucleus. Cytoplasm. Cytoplasm > perinuclear region. Golgi apparatus. Accumulates in the nucleus by inhibition of CRM1-mediated nuclear export. Nuclear accumulation is increased by inhibition of its kinase activity. The trafficking from the Golgi apparatus to the plasma membrane occurs in a kinase domain-dependent but kinase activity independent manner and is mediated by exocytic vesicular transport.
製品の状態	This protein is known to be similar in amino acid sequence to HCK (P08631), LCK (P06239), FYN (P06241), YES1 (P07947), and SRC (P12931). Therefore, cross-reactivity with these

homologous proteins may be observed. We would be happy to provide immunogen alignment information upon request.

画像



All lanes : Anti-Lyn (phospho Y507) antibody [EP504Y] (ab33914) at 1/1000 dilution

Lane 1 : Raji whole cell lysate

Lane 2 : Raji treated with 1mM pervanadate for 30 min whole cell lysate

Lane 3 : Raji treated with 1mM pervanadate for 30 min whole cell lysate, the membrane was incubated with alkaline phosphatase.

Lysates/proteins at 10 µg per lane.

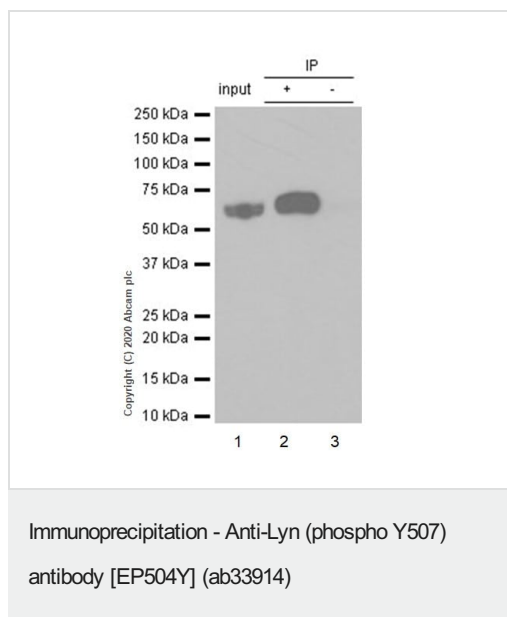
Secondary

All lanes : Goat Anti-Rabbit IgG H&L (HRP) (**ab97051**) at 1/20000 dilution

Predicted band size: 61 kDa

Observed band size: 61 kDa

Blocking and dilution buffer: 5% NFDM/TBST.



Purified ab33914 at 1/80 dilution (2µg) immunoprecipitating Lyn in SH-SY5Y treated with pervanadate whole cell lysate.

Lane 1 (input): SH-SY5Y (Human neuroblastoma epithelial cell) treated with pervanadate whole cell lysate 10µg

Lane 2 (+): ab33914 + SH-SY5Y treated with pervanadate whole cell lysate.

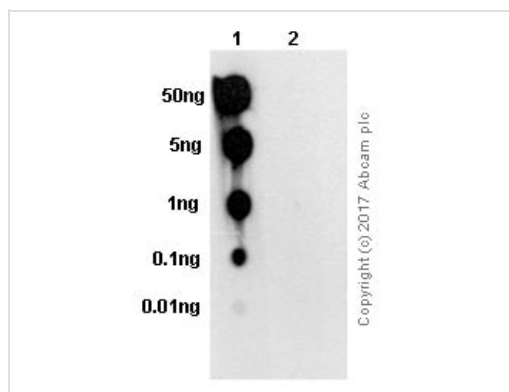
Lane 3 (-): Rabbit monoclonal IgG (**ab172730**) instead of **ab256224** in SH-SY5Y treated with pervanadate whole cell lysate.

VeriBlot for IP Detection Reagent (HRP) (**ab131366**) (1/1000 dilution) was used for Western blotting.

Blocking Buffer and concentration: 5% NFDM/TBST.

Diluting buffer and concentration: 5% NFDM/TBST.

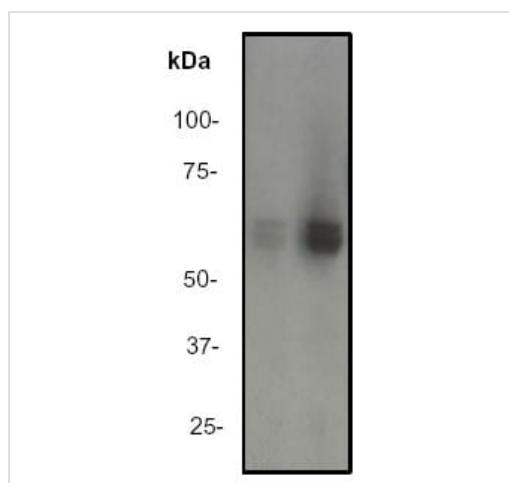
Observed band size: 61 kDa



Dot Blot - Anti-Lyn (phospho Y507) antibody
[EP504Y] (ab33914)

Dot blot analysis of Lyn (phospho Y507) phospho peptide (Lane 1) and Lyn non-phospho peptide (Lane 2) labelling Lyn (phospho Y507) with ab33914 at a dilution of 1/1000. A Goat Anti-Rabbit IgG, (H+L), Peroxidase conjugated (**ab97051**) was used as the secondary antibody at a dilution of 1/100,000.

Blocking and dilution buffer: 5% NFDM /TBST.



Western blot - Anti-Lyn (phospho Y507) antibody
[EP504Y] (ab33914)

All lanes : Anti-Lyn (phospho Y507) antibody [EP504Y] (ab33914) at 1/5000 dilution

Lane 1 : 10ug Non treated HeLa cell lysate

Lane 2 : 10ug HeLa cell lysate treated with Pervanadate

Secondary

All lanes : Goat anti-rabbit HRP labeled.

Predicted band size: 61 kDa

Please note: All products are "FOR RESEARCH USE ONLY. NOT FOR USE IN DIAGNOSTIC PROCEDURES"

Our Abpromise to you: Quality guaranteed and expert technical support

- Replacement or refund for products not performing as stated on the datasheet
- Valid for 12 months from date of delivery
- Response to your inquiry within 24 hours
- We provide support in Chinese, English, French, German, Japanese and Spanish
- Extensive multi-media technical resources to help you
- We investigate all quality concerns to ensure our products perform to the highest standards

If the product does not perform as described on this datasheet, we will offer a refund or replacement. For full details of the Abpromise, please visit <https://www.abcam.co.jp/abpromise> or contact our technical team.

Terms and conditions

- Guarantee only valid for products bought direct from Abcam or one of our authorized distributors