

Anti-Ly-6A/E (Sca-1) antibody - Hematopoietic Stem Cell Marker ab93843

画像数 1

製品の概要

製品名	Anti-Ly-6A/E (Sca-1) antibody - Hematopoietic Stem Cell Marker
製品の詳細	Rabbit polyclonal to Ly-6A/E (Sca-1) - Hematopoietic Stem Cell Marker
由来種	Rabbit
アプリケーション	適用あり: WB
種交差性	交差種: Mouse
免疫原	Synthetic peptide corresponding to Mouse Sca1/ Ly6A/E aa 50 to the C-terminus conjugated to keyhole limpet haemocyanin. (Peptide available as ab104951)
ポジティブ・コントロール	This antibody gave a positive signal in Mouse thymus and kidney tissue lysates.
特記事項	<p>The Life Science industry has been in the grips of a reproducibility crisis for a number of years. Abcam is leading the way in addressing this with our range of recombinant monoclonal antibodies and knockout edited cell lines for gold-standard validation. Please check that this product meets your needs before purchasing.</p> <p>If you have any questions, special requirements or concerns, please send us an inquiry and/or contact our Support team ahead of purchase. Recommended alternatives for this product can be found below, along with publications, customer reviews and Q&As</p>

製品の特性

製品の状態	Liquid
保存方法	Shipped at 4°C. Store at +4°C short term (1-2 weeks). Upon delivery aliquot. Store at -20°C or -80°C. Avoid freeze / thaw cycle.
バッファー	<p>pH: 7.40</p> <p>Preservative: 0.02% Sodium azide</p> <p>Constituent: PBS</p> <p>Batches of this product that have a concentration < 1mg/ml may have BSA added as a stabilising agent. If you would like information about the formulation of a specific lot, please contact our scientific support team who will be happy to help.</p>
精製度	Immunogen affinity purified

ポリ/モノ
アイソタイプ

ポリクローナル
IgG

アプリケーション

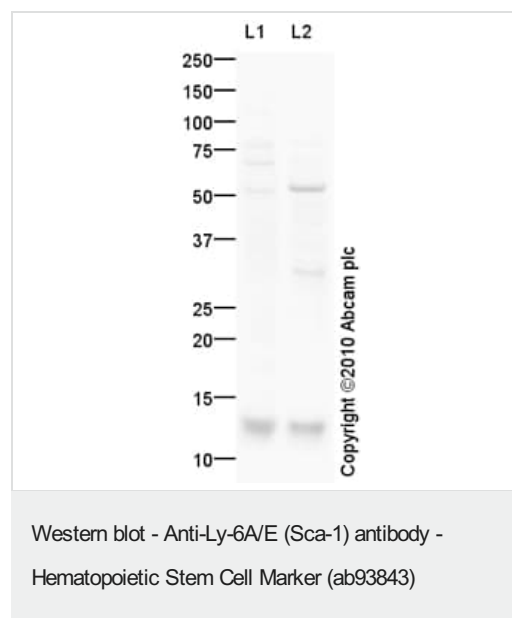
The Abpromise guarantee Abpromise保証は、次のテスト済みアプリケーションにおけるab93843の使用に適用されます
アプリケーションノートには、推奨の開始希釈率がありますが、適切な希釈率につきましてはご検討ください。

アプリケーション	Abreviews	特記事項
WB		Use a concentration of 1 µg/ml. Detects a band of approximately 13 kDa (predicted molecular weight: 14 kDa).

ターゲット情報

機能	T-cell activation.
組織特異性	Widely expressed.
配列類似性	Contains 1 UPAR/Ly6 domain.
翻訳後修飾	O-glycosylated. Not N-glycosylated. Not phosphorylated.
細胞内局在	Cell membrane.

画像



All lanes : Anti-Ly-6A/E (Sca-1) antibody - Hematopoietic Stem Cell Marker (ab93843) at 1 µg/ml

Lane 1 : Thymus (Mouse) Tissue Lysate

Lane 2 : Kidney (Mouse) Tissue Lysate

Lysates/proteins at 10 µg per lane.

Secondary

All lanes : Goat Anti-Rabbit IgG H&L (HRP) preadsorbed
(**ab97080**) at 1/5000 dilution

Developed using the ECL technique.

Performed under reducing conditions.

Predicted band size: 14 kDa

Observed band size: 13 kDa

Additional bands at: 31 kDa, 51 kDa. We are unsure as to the

identity of these extra bands.

Exposure time: 8 minutes

The band observed at 13 kDa could potentially be a cleaved form of Ly6A/E (Sca1) due to the presence of a 26 amino acid signal peptide.

Please note: All products are "FOR RESEARCH USE ONLY. NOT FOR USE IN DIAGNOSTIC PROCEDURES"

Our Abpromise to you: Quality guaranteed and expert technical support

- Replacement or refund for products not performing as stated on the datasheet
- Valid for 12 months from date of delivery
- Response to your inquiry within 24 hours
- We provide support in Chinese, English, French, German, Japanese and Spanish
- Extensive multi-media technical resources to help you
- We investigate all quality concerns to ensure our products perform to the highest standards

If the product does not perform as described on this datasheet, we will offer a refund or replacement. For full details of the Abpromise, please visit <https://www.abcam.co.jp/abpromise> or contact our technical team.

Terms and conditions

- Guarantee only valid for products bought direct from Abcam or one of our authorized distributors