

Anti-Ly-6A/E (Sca-1) antibody [EPR3355] ab109211

リコンビナント **RabMAb**

★★★★★ **1 Abreviews** **10 References** 画像数 6

製品の概要

製品名	Anti-Ly-6A/E (Sca-1) antibody [EPR3355]
製品の詳細	Rabbit monoclonal [EPR3355] to Ly-6A/E (Sca-1)
由来種	Rabbit
アプリケーション	適用あり: WB, IHC-P 適用なし: Flow Cyt, ICC/IF or IP
種交差性	交差種: Mouse
免疫原	Synthetic peptide. This information is proprietary to Abcam and/or its suppliers.
ポジティブ・コントロール	WB: Mouse bone marrow, and Hepa1-6 lysates. IHC-P: mouse kidney tissue.
特記事項	<p>This product is a recombinant monoclonal antibody, which offers several advantages including:</p> <ul style="list-style-type: none"> - High batch-to-batch consistency and reproducibility - Improved sensitivity and specificity - Long-term security of supply - Animal-free production <p>For more information see here.</p> <p>Our RabMAb[®] technology is a patented hybridoma-based technology for making rabbit monoclonal antibodies. For details on our patents, please refer to RabMAb[®] patents.</p> <p>Human, Rat: We have preliminary internal testing data to indicate this antibody may not react with these species. Please contact us for more information.</p>

製品の特性

製品の状態	Liquid
保存方法	Shipped at 4°C. Store at -20°C. Stable for 12 months at -20°C.
バッファー	pH: 7.20 Preservative: 0.01% Sodium azide Constituents: 59% PBS, 40% Glycerol (glycerin, glycerine), 0.05% BSA
精製度	Protein A purified
ポリ/モノ	モノクローナル
クローン名	EPR3355

アイソタイプ

IgG

アプリケーション

The Abpromise guarantee Abpromise保証は、 次のテスト済みアプリケーションにおけるab109211の使用に適用されます
アプリケーションノートには、推奨の開始希釈率がありますが、適切な希釈率につきましてはご確認ください。

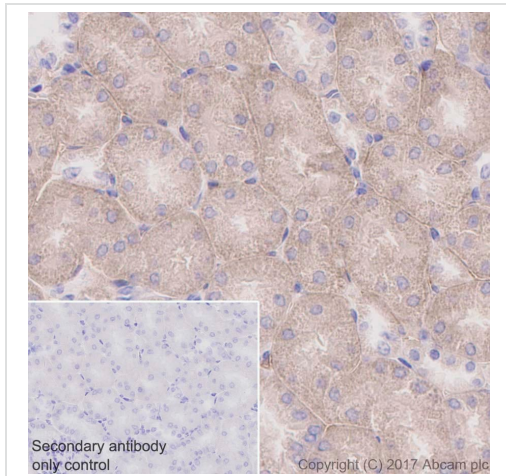
アプリケーション	Abreviews	特記事項
WB		1/1000 - 1/10000. Detects a band of approximately 18 kDa (predicted molecular weight: 14 kDa).
IHC-P	★★★★★ (1)	1/150. Perform heat mediated antigen retrieval with citrate buffer pH 6 before commencing with IHC staining protocol. Antigen retrieval is recommended. See <u>IHC antigen retrieval protocols</u> . For unpurified use at 1/50 - 1/100

追加情報 Is unsuitable for Flow Cyt, ICC/IF or IP.

ターゲット情報

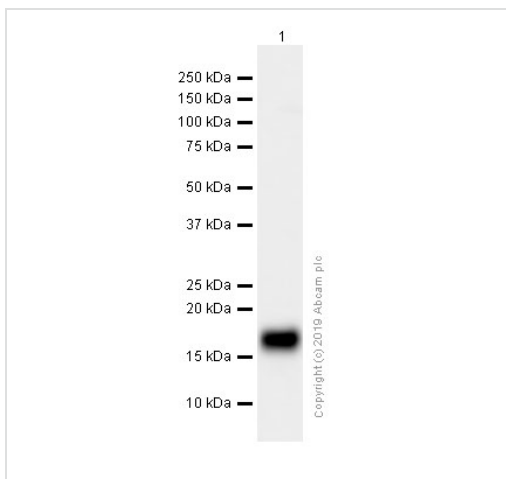
機能	T-cell activation.
組織特異性	Widely expressed.
配列類似性	Contains 1 UPAR/Ly6 domain.
翻訳後修飾	O-glycosylated. Not N-glycosylated. Not phosphorylated.
細胞内局在	Cell membrane.

画像



Immunohistochemistry (Formalin/PFA-fixed paraffin-embedded sections) - Anti-Ly-6A/E (Sca-1) antibody [EPR3355] (ab109211)

Immunohistochemistry (Formalin/PFA-fixed paraffin-embedded sections) analysis of mouse kidney tissue sections labeling Ly6A/E (Sca1) with Purified ab109211 at 1:150 dilution (1.37 µg/ml). Perform heat mediated antigen retrieval using [ab93684](#) (Tris/EDTA buffer, pH 9.0). Purified ImmunoHistoProbe one step HRP Polymer (ready to use) was used for detection. Negative control: PBS instead of the primary antibody. Hematoxylin was used as a counterstain.



Western blot - Anti-Ly-6A/E (Sca-1) antibody [EPR3355] (ab109211)

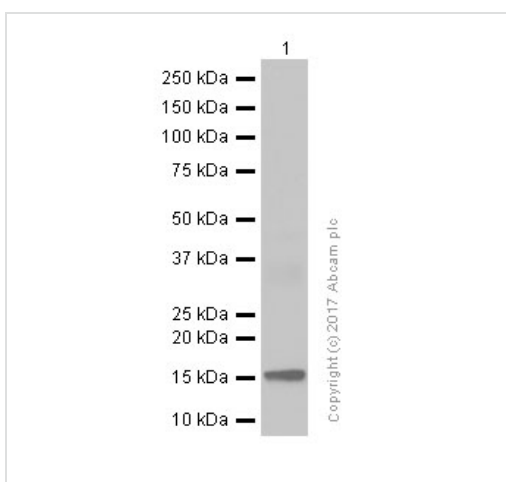
Anti-Ly-6A/E (Sca-1) antibody [EPR3355] (ab109211) at 1/10000 dilution (Purified) + Hepa1-6 (Mouse hepatoma epithelial cell) whole cell lysates at 15 µg

Secondary

Goat Anti-Rabbit IgG H&L (HRP) ([ab97051](#)) at 1/20000 dilution

Predicted band size: 14 kDa

Observed band size: 18 kDa



Western blot - Anti-Ly-6A/E (Sca-1) antibody [EPR3355] (ab109211)

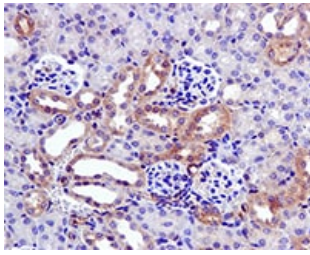
Anti-Ly-6A/E (Sca-1) antibody [EPR3355] (ab109211) at 1/1000 dilution (Purified) + Mouse bone marrow lysates at 15 µg

Secondary

Goat Anti-Rabbit IgG H&L (HRP) ([ab97051](#)) at 1/20000 dilution

Predicted band size: 14 kDa

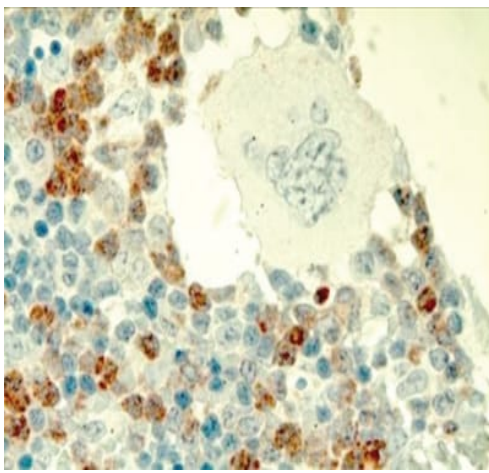
Observed band size: 18 kDa



Immunohistochemistry (Formalin/PFA-fixed paraffin-embedded sections) - Anti-Ly-6A/E (Sca-1) antibody [EPR3355] (ab109211)

ab109211, at 1/50 dilution staining Ly6A/E (Sca1) in paraffin-embedded Mouse kidney tissue by Immunohistochemistry.

Perform heat mediated antigen retrieval with citrate buffer pH 6 before commencing with IHC staining protocol.



Immunohistochemistry (Formalin/PFA-fixed paraffin-embedded sections) - Anti-Ly-6A/E (Sca-1) antibody [EPR3355] (ab109211)

Image from Basile LA et al., PLoS One. 2012;7(2):e30434. Epub 2012 Feb 24. Fig 5.; doi:10.1371/journal.pone.0030434; February 24, 2012, PLoS ONE 7(2): e30434.

Immunohistochemical analysis of murine bone marrow tissue, following total body irradiation, staining Sca1 / Ly6A/E with ab109211. Sections were blocked with blocking reagent before staining with primary antibody and a peroxidase conjugated anti-rabbit IgG. Staining was detected with AEC substrate.

Perform heat mediated antigen retrieval with citrate buffer pH 6 before commencing with IHC staining protocol.

Why choose a recombinant antibody?



Research with confidence
Consistent and reproducible results



Long-term and scalable supply
Recombinant technology



Success from the first experiment
Confirmed specificity



Ethical standards compliant
Animal-free production

Anti-Ly-6A/E (Sca-1) antibody [EPR3355] (ab109211)

Please note: All products are "FOR RESEARCH USE ONLY. NOT FOR USE IN DIAGNOSTIC PROCEDURES"

Our Abpromise to you: Quality guaranteed and expert technical support

- Replacement or refund for products not performing as stated on the datasheet
- Valid for 12 months from date of delivery
- Response to your inquiry within 24 hours

- We provide support in Chinese, English, French, German, Japanese and Spanish
- Extensive multi-media technical resources to help you
- We investigate all quality concerns to ensure our products perform to the highest standards

If the product does not perform as described on this datasheet, we will offer a refund or replacement. For full details of the Abpromise, please visit <https://www.abcam.co.jp/abpromise> or contact our technical team.

Terms and conditions

- Guarantee only valid for products bought direct from Abcam or one of our authorized distributors