


# Anti-LXR alpha antibody [EPR6508(N)] ab176323

リコンビナント RabMAb

★★★★★ **2 Abreviews** **47 References** **画像数 4**

### 製品の概要

製品名	Anti-LXR alpha antibody [EPR6508(N)]
製品の詳細	Rabbit monoclonal [EPR6508(N)] to LXR alpha
由来種	Rabbit
アプリケーション	<b>適用あり:</b> WB <b>適用なし:</b> Flow Cyt (Intra), ICC/IF, IHC-P or IP
種交差性	<b>交差種:</b> Human <b>交差が予測される動物種:</b> Mouse, Rat, Sheep 
免疫原	Synthetic peptide within Human LXR alpha aa 50-150 (Cysteine residue). The exact sequence is proprietary. Database link: <a href="#">Q13133</a> (Peptide available as <a href="#">ab191835</a> )
ポジティブ・コントロール	WB: Jurkat, SH-SY5Y, IMR-32 cell non-nuclear and nuclear fractions, HEK 293 transfected with blank vectors, blank vectors non-nuclear fraction and blank vectors nuclear fraction, HEK 293 transfected with His tagged human LXR alpha full length expression vectors non-nuclear fraction and nuclear fraction, HEK 293 transfected with His tagged human LXR alpha and beta full length expression vectors.
特記事項	This product is a recombinant monoclonal antibody, which offers several advantages including: <ul style="list-style-type: none"><li>- High batch-to-batch consistency and reproducibility</li><li>- Improved sensitivity and specificity</li><li>- Long-term security of supply</li><li>- Animal-free production</li></ul> For more information <a href="#">see here</a> . Our RabMAb <sup>®</sup> technology is a patented hybridoma-based technology for making rabbit monoclonal antibodies. For details on our patents, please refer to <a href="#">RabMAb<sup>®</sup> patents</a> .

### 製品の特性

製品の状態	Liquid
保存方法	Shipped at 4°C. Store at +4°C short term (1-2 weeks). Upon delivery aliquot. Store at -20°C long term. Avoid freeze / thaw cycle.

バッファー	pH: 7.20 Preservative: 0.01% Sodium azide Constituents: 9% PBS, 40% Glycerol (glycerin, glycerine), 0.05% BSA, 50% Tissue culture supernatant
精製度	Protein A purified
ポリ/モノ	モノクローナル
クローン名	EPR6508(N)
アイソタイプ	IgG

## アプリケーション

**The Abpromise guarantee**      **Abpromise保証は、次のテスト済みアプリケーションにおけるab176323の使用に適用されず**  
アプリケーションノートには、推奨の開始希釈率がありますが、適切な希釈率につきましてはご検討ください。

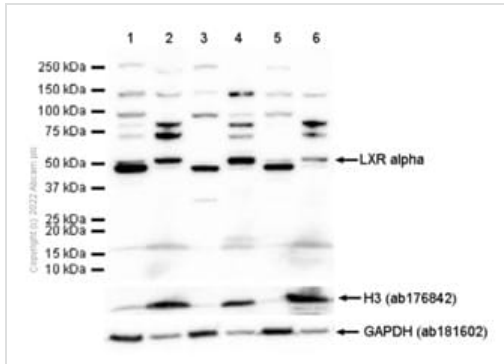
アプリケーション	Abreviews	特記事項
WB	★★★★★ (2)	1/1000 - 1/5000. Predicted molecular weight: 50 kDa.

**追加情報**      Is unsuitable for Flow Cyt (Intra), ICC/IF, IHC-P or IP.

## ターゲット情報

<b>機能</b>	Orphan receptor. Interaction with RXR shifts RXR from its role as a silent DNA-binding partner to an active ligand-binding subunit in mediating retinoid responses through target genes defined by LXRES. LXRES are DR4-type response elements characterized by direct repeats of two similar hexanucleotide half-sites spaced by four nucleotides. Plays an important role in the regulation of cholesterol homeostasis, regulating cholesterol uptake through MYLIP-dependent ubiquitination of LDLR, VLDLR and LRP8.
<b>組織特異性</b>	Visceral organs specific expression. Strong expression was found in liver, kidney and intestine followed by spleen and to a lesser extent the adrenals.
<b>配列類似性</b>	Belongs to the nuclear hormone receptor family. NR1 subfamily. Contains 1 nuclear receptor DNA-binding domain.
<b>細胞内局在</b>	Nucleus.

## 画像



Western blot - Anti-LXR alpha antibody  
[EPR6508(N)] (ab176323)

**All lanes** : Anti-LXR alpha antibody [EPR6508(N)] (ab176323) at 1/1000 dilution

**Lane 1** : Jurkat (Human T cell leukemia T lymphocyte) cells non-nuclear fraction

**Lane 2** : Jurkat (Human T cell leukemia T lymphocyte) cells nuclear fraction

**Lane 3** : SH-SY5Y (Human neuroblastoma epithelial cell) cells non-nuclear fraction

**Lane 4** : SH-SY5Y (Human neuroblastoma epithelial cell) cells nuclear fraction

**Lane 5** : IMR-32 (Human neuroblastoma neuroblast) cells non-nuclear fraction

**Lane 6** : IMR-32 (Human neuroblastoma neuroblast) cells nuclear fraction

Lysates/proteins at 20 µg per lane.

**Secondary**

**All lanes** : Goat Anti-Rabbit IgG H&L (HRP) (**ab97051**) at 1/20000 dilution

**Predicted band size:** 50 kDa

**Observed band size:** 50 kDa

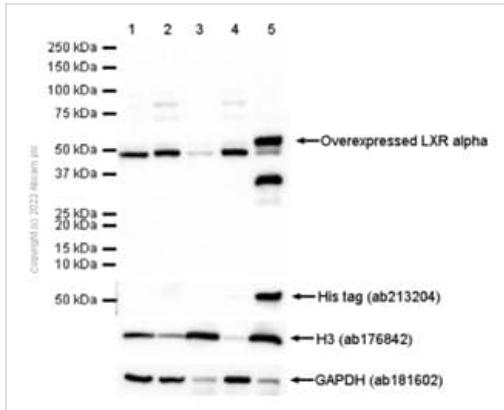
**Exposure time:** 7 seconds

**Blocking buffer and concentration:** 5% NFDM/TBST

**Diluting buffer and concentration:** 5% NFDM/TBST

Ab176323 detects a higher band in nuclear fraction than in non-nuclear fraction, which might be the correct band of interest.

**ab176842** and **ab181602** were used as loading controls.



Western blot - Anti-LXR alpha antibody  
[EPR6508(N)] (ab176323)

**All lanes** : Anti-LXR alpha antibody [EPR6508(N)] (ab176323) at 1/1000 dilution

**Lane 1** : HEK 293 transfected with blank vectors, whole cell lysate

**Lane 2** : HEK 293 transfected with blank vectors, non-nuclear fraction

**Lane 3** : HEK 293 transfected with blank vectors, nuclear fraction

**Lane 4** : HEK 293 transfected with His tagged human LXR alpha full length expression vectors, non-nuclear fraction

**Lane 5** : HEK 293 transfected with His tagged human LXR alpha full length expression vectors, nuclear fraction

Lysates/proteins at 20 µg per lane.

### Secondary

**All lanes** : Goat Anti-Rabbit IgG H&L (HRP) (**ab97051**) at 1/20000 dilution

**Predicted band size:** 50 kDa

**Observed band size:** 50 kDa

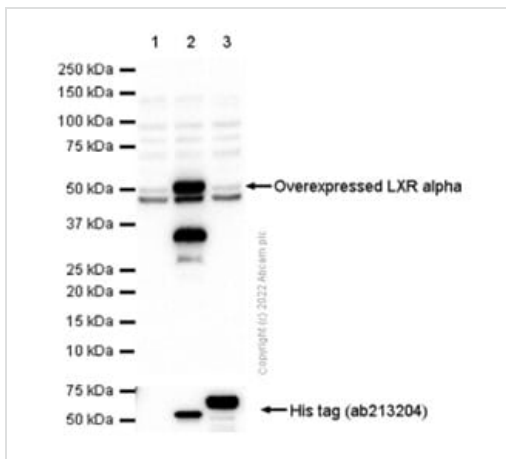
**Exposure time:** 10 seconds

**Blocking buffer and concentration:** 5% NFDm/TBST

**Diluting buffer and concentration:** 5% NFDm/TBST

Ab176323 detects a higher band in nuclear fraction than in non-nuclear fraction, which might be the correct band of interest.

**ab213204**, **ab176842** and **ab181602** were used as loading controls.



Western blot - Anti-LXR alpha antibody  
[EPR6508(N)] (ab176323)

**All lanes** : Anti-LXR alpha antibody [EPR6508(N)] (ab176323) at 1/1000 dilution

**Lane 1** : HEK 293 transfected with blank vectors, whole cell lysate

**Lane 2** : HEK 293 transfected with His tagged human LXR alpha full length expression vectors, whole cell lysate

**Lane 3** : HEK 293 transfected with His tagged human LXR beta full length expression vectors, whole cell lysate

Lysates/proteins at 20 µg per lane.

### Secondary

**All lanes** : Goat Anti-Rabbit IgG H&L (HRP) (**ab97051**) at 1/20000 dilution

**Predicted band size:** 50 kDa

**Observed band size:** 50 kDa

**Exposure time:** 3 seconds





**Blocking buffer and concentration:** 5% NFDM/TBST

**Diluting buffer and concentration:** 5% NFDM/TBST

Ab176323 does not cross activate with human LXR beta.

**ab213204** was used as loading control.

Why choose a recombinant antibody?

 <p><b>Research with confidence</b> Consistent and reproducible results</p>	 <p><b>Long-term and scalable supply</b> Recombinant technology</p>
 <p><b>Success from the first experiment</b> Confirmed specificity</p>	 <p><b>Ethical standards compliant</b> Animal-free production</p>

Anti-LXR alpha antibody [EPR6508(N)] (ab176323)

**Please note:** All products are "FOR RESEARCH USE ONLY. NOT FOR USE IN DIAGNOSTIC PROCEDURES"

### **Our Abpromise to you: Quality guaranteed and expert technical support**

---

- Replacement or refund for products not performing as stated on the datasheet
- Valid for 12 months from date of delivery
- Response to your inquiry within 24 hours
  
- We provide support in Chinese, English, French, German, Japanese and Spanish
- Extensive multi-media technical resources to help you
- We investigate all quality concerns to ensure our products perform to the highest standards

If the product does not perform as described on this datasheet, we will offer a refund or replacement. For full details of the Abpromise, please visit <https://www.abcam.co.jp/abpromise> or contact our technical team.

### **Terms and conditions**

---

- Guarantee only valid for products bought direct from Abcam or one of our authorized distributors