




### Anti-LXR alpha antibody ab3585

★★★★☆ [3 Abreviews](#) [19 References](#) [画像数 2](#)

#### 製品の概要

製品名	Anti-LXR alpha antibody
製品の詳細	Rabbit polyclonal to LXR alpha
由来種	Rabbit
特異性	Detects recombinant Human LXR alpha. This antibody does not detect recombinant Human LXR beta.
アプリケーション	<b>適用あり:</b> ICC, IHC-FoFr, ICC/IF <b>適用なし:</b> WB
種交差性	<b>交差種:</b> Mouse, Rat, Human, Chinese hamster <b>交差が予測される動物種:</b> Cow 
免疫原	Synthetic peptide corresponding to Human LXR alpha aa 318-329. Sequence: DFSYNREDFAKA  (Peptide available as <a href="#">ab5021</a> ) <div>  <a href="#">Run BLAST with</a>  <a href="#">Run BLAST with</a> </div>
ポジティブ・コントロール	ICC: MCF7, HeLa cells.
特記事項	<p>The Life Science industry has been in the grips of a reproducibility crisis for a number of years. Abcam is leading the way in addressing this with our range of recombinant monoclonal antibodies and knockout edited cell lines for gold-standard validation. Please check that this product meets your needs before purchasing.</p> <p>If you have any questions, special requirements or concerns, please send us an inquiry and/or contact our Support team ahead of purchase. Recommended alternatives for this product can be found below, along with publications, customer reviews and Q&amp;As</p>

#### 製品の特性

製品の状態	Liquid
保存方法	Shipped at 4°C. Store at +4°C short term (1-2 weeks). Upon delivery aliquot. Store at -20°C or -80°C. Avoid freeze / thaw cycle.
バッファー	Preservative: 0.05% Sodium azide Constituents: 99% PBS, 0.1% BSA

精製度	Immunogen affinity purified
一次抗体 備考	Liver X Receptors (LXRs) are oxysterol activated nuclear receptors which are involved in the regulation of genesis and metabolism of cholesterol and bile acids. LXRs form heterodimeric complexes with the retinoic acid receptors (RARs) once activated by their respective oxysterol ligands. Two known isoforms, alpha and beta, are differentially expressed; the alpha isoform predominantly expressed in liver, whereas beta isoform expression has been shown to be ubiquitous.
ポリ/モノ	ポリクローナル
アイソタイプ	IgG

## アプリケーション

**The Abpromise guarantee**      **Abpromise保証は、**次のテスト済みアプリケーションにおけるab3585の使用に適用されます  
アプリケーションノートには、推奨の開始希釈率がありますが、適切な希釈率につきましてはご検討ください。

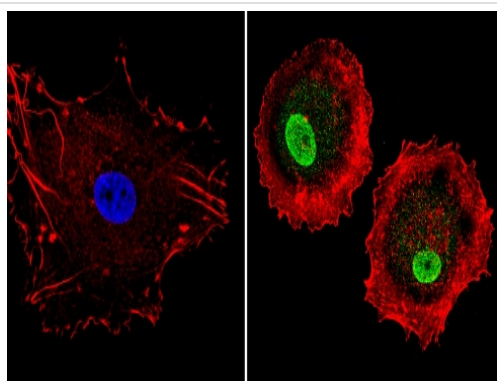
アプリケーション	Abreviews	特記事項
ICC		1/50 - 1/500.
EMSA		Use at an assay dependent concentration.
Gel Shift Assay		Use at an assay dependent concentration.
IHC-FoFr		Use at an assay dependent concentration. PubMed: 22836489
ICC/IF	★★★★☆ (2)	Use at an assay dependent concentration.

**追加情報**      Is unsuitable for WB.

## ターゲット情報

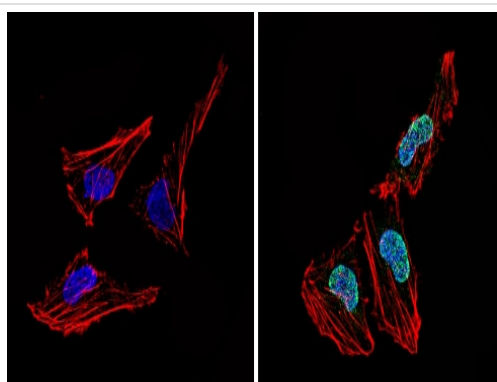
機能	Orphan receptor. Interaction with RXR shifts RXR from its role as a silent DNA-binding partner to an active ligand-binding subunit in mediating retinoid responses through target genes defined by LXRES. LXRES are DR4-type response elements characterized by direct repeats of two similar hexanucleotide half-sites spaced by four nucleotides. Plays an important role in the regulation of cholesterol homeostasis, regulating cholesterol uptake through MYLIP-dependent ubiquitination of LDLR, VLDLR and LRP8.
組織特異性	Visceral organs specific expression. Strong expression was found in liver, kidney and intestine followed by spleen and to a lesser extent the adrenals.
配列類似性	Belongs to the nuclear hormone receptor family. NR1 subfamily. Contains 1 nuclear receptor DNA-binding domain.
細胞内局在	Nucleus.

## 画像



Immunocytochemistry - Anti-LXR alpha antibody  
(ab3585)

Immunocytochemistry/Immunofluorescence analysis of MCF-7 cells labeling LXR alpha (green) with ab3585 at 1/300. F-Actin staining with Phalloidin (red) and nuclei with DAPI or Hoechst (blue). Cells were fixed with formalin, permeabilized with 0.1% Triton X-100 in TBS for 5-10 minutes and blocked with 3% BSA in PBS for 30 minutes at room temperature. Cells were incubated with the primary antibody overnight at 4°C. A DyLight-conjugated secondary antibody was used. 60X magnification. Left - negative control.



Immunocytochemistry - Anti-LXR alpha antibody  
(ab3585)

Immunocytochemistry/Immunofluorescence analysis of HeLa cells labeling LXR alpha (green) with ab3585 at 1/300. F-Actin staining with Phalloidin (red) and nuclei with DAPI or Hoechst (blue). Cells were fixed with formalin, permeabilized with 0.1% Triton X-100 in TBS for 5-10 minutes and blocked with 3% BSA in PBS for 30 minutes at room temperature. Cells were incubated with the primary antibody overnight at 4°C. A DyLight-conjugated secondary antibody was used. 60X magnification. Left - negative control.

**Please note:** All products are "FOR RESEARCH USE ONLY. NOT FOR USE IN DIAGNOSTIC PROCEDURES"

### Our Abpromise to you: Quality guaranteed and expert technical support

- Replacement or refund for products not performing as stated on the datasheet
- Valid for 12 months from date of delivery
- Response to your inquiry within 24 hours
- We provide support in Chinese, English, French, German, Japanese and Spanish
- Extensive multi-media technical resources to help you
- We investigate all quality concerns to ensure our products perform to the highest standards

If the product does not perform as described on this datasheet, we will offer a refund or replacement. For full details of the Abpromise, please visit <https://www.abcam.co.jp/abpromise> or contact our technical team.

### Terms and conditions

- Guarantee only valid for products bought direct from Abcam or one of our authorized distributors