


Anti-LXR alpha + LXR beta antibody ab24362

★★★★★ [2 Abreviews](#) [7 References](#) [画像数 3](#)

製品の概要

製品名	Anti-LXR alpha + LXR beta antibody
製品の詳細	Goat polyclonal to LXR alpha + LXR beta
由来種	Goat
アプリケーション	適用あり: Flow Cyt (Intra), ICC/IF, WB
種交差性	交差種: Human 交差が予測される動物種: Rat, Chicken, Cow, Pig, Xenopus laevis, Zebrafish 
免疫原	Peptide with sequence (C)RLQDKKLPLLSEI, from the C-terminus of the human protein sequences according to NP_005684; NP_009052. Run BLAST with Expasy Run BLAST with NCBI
ポジティブ・コントロール	WB: Human kidney and liver lysate; Flow Cyt (intra): A549 cells; ICC/IF: A549 cells.
特記事項	<p>The Life Science industry has been in the grips of a reproducibility crisis for a number of years. Abcam is leading the way in addressing this with our range of recombinant monoclonal antibodies and knockout edited cell lines for gold-standard validation. Please check that this product meets your needs before purchasing.</p> <p>If you have any questions, special requirements or concerns, please send us an inquiry and/or contact our Support team ahead of purchase. Recommended alternatives for this product can be found below, along with publications, customer reviews and Q&As</p>

製品の特性

製品の状態	Liquid
保存方法	Shipped at 4°C. Upon delivery aliquot and store at -20°C. Avoid freeze / thaw cycles.
バッファー	pH: 7.30 Preservative: 0.02% Sodium azide Constituents: Tris buffered saline, 0.5% BSA
精製度	Immunogen affinity purified
特記事項 (精製)	Purified from goat serum by ammonium sulphate precipitation followed by antigen affinity chromatography using the immunizing peptide.
ポリ/モノ	ポリクローナル
アイソタイプ	IgG

アプリケーション

The Abpromise guarantee **Abpromise保証は、次のテスト済みアプリケーションにおけるab24362の使用に適用されます**
アプリケーションノートには、推奨の開始希釈率がありますが、適切な希釈率につきましてはご検討ください。

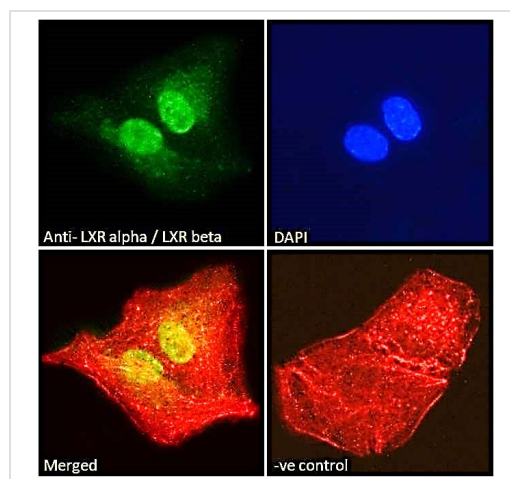
アプリケーション	Abreviews	特記事項
Flow Cyt (Intra)		Use a concentration of 10 µg/ml.
ICC/IF		Use a concentration of 10 µg/ml.
WB	★★★★★ (2)	Use a concentration of 1 - 3 µg/ml. Detects a band of approximately 55 kDa (predicted molecular weight: 51 kDa). 1 hour primary incubation is recommended for this product.

ターゲット情報

関連性 LXR alpha and LXR beta are orphan receptors. Interaction with RXR shifts RXR from its role as a silent DNA binding partner to an active ligand binding subunit in mediating retinoid responses through target genes defined by LXRES. LXRES are DR4 type response elements characterized by direct repeats of two similar hexanuclotide half sites spaced by four nucleotides. Plays an important role in the regulation of cholesterol homeostasis. LXR alpha: Visceral organs specific expression. Strong expression was found in liver, kidney and intestine followed by spleen and to a lesser extent the adrenals. LXR beta: Ubiquitously expressed.

細胞内局在 Nuclear

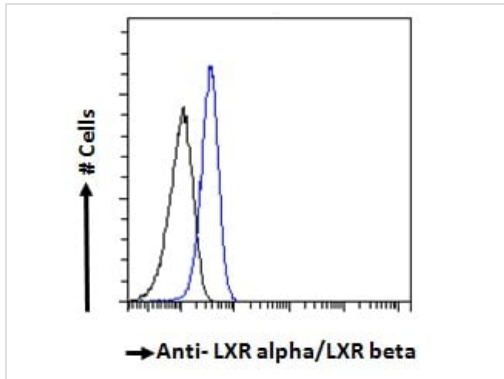
画像



Immunocytochemical/Immunofluorescent analysis of paraformaldehyde-fixed, 0.15% triton permeabilized A549 cells labelling LXR alpha + LXR beta with ab24362 at 10µg/ml, followed by Alexa Fluor 488 secondary antibody at 2µg/ml. Actin filaments were stained with phalloidin (red) and the nuclear stain is DAPI (blue).

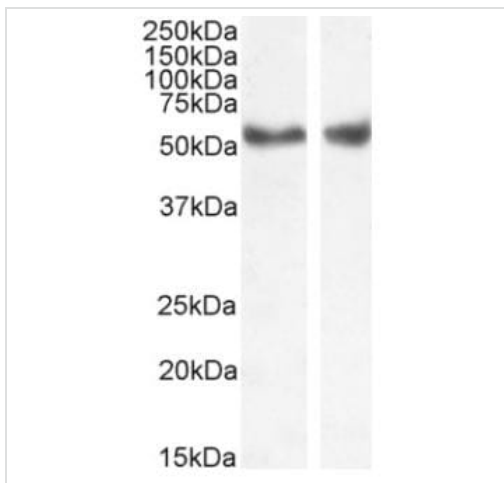
Negative control: Unimmunized goat IgG (10ug/ml) followed by Alexa Fluor 488 secondary antibody (2ug/ml).

Immunocytochemistry/ Immunofluorescence - Anti-LXR alpha + LXR beta antibody (ab24362)



Flow Cytometry (Intracellular) - Anti-LXR alpha + LXR beta antibody (ab24362)

Flow cytometric analysis of paraformaldehyde fixed A549 cells (blue line), permeabilized with 0.5% Triton, followed by Alexa Fluor 488 secondary antibody (1 µg/ml). IgG control: Unimmunized goat IgG (black line) followed by Alexa Fluor 488 secondary antibody.



Western blot - Anti-LXR alpha + LXR beta antibody (ab24362)

All lanes : Anti-LXR alpha + LXR beta antibody (ab24362) at 1 µg/ml

Lane 1 : Human liver lysate in RIPA buffer

Lane 2 : Human kidney lysate in RIPA buffer

Lysates/proteins at 35 µg per lane.

Developed using the ECL technique.

Predicted band size: 51 kDa

Please note: All products are "FOR RESEARCH USE ONLY. NOT FOR USE IN DIAGNOSTIC PROCEDURES"

Our Abpromise to you: Quality guaranteed and expert technical support

- Replacement or refund for products not performing as stated on the datasheet
- Valid for 12 months from date of delivery
- Response to your inquiry within 24 hours
- We provide support in Chinese, English, French, German, Japanese and Spanish
- Extensive multi-media technical resources to help you
- We investigate all quality concerns to ensure our products perform to the highest standards

If the product does not perform as described on this datasheet, we will offer a refund or replacement. For full details of the Abpromise, please visit <https://www.abcam.co.jp/abpromise> or contact our technical team.

Terms and conditions

- Guarantee only valid for products bought direct from Abcam or one of our authorized distributors