


Anti-Lumican antibody [EPR8898(2)] ab168348

リコンビナント **RabMAb**

★★★★★ **14 Abreviews** **30 References** 画像数 6

製品の概要

| | |
|--------------|--|
| 製品名 | Anti-Lumican antibody [EPR8898(2)] |
| 製品の詳細 | Rabbit monoclonal [EPR8898(2)] to Lumican |
| 由来種 | Rabbit |
| アプリケーション | 適用あり: Flow Cyt (Intra), WB, IHC-P, ICC/IF 適用なし: IP |
| 種交差性 | 交差種: Human 交差が予測される動物種: Mouse, Rat  |
| 免疫原 | Synthetic peptide within Human Lumican aa 250-350. The exact sequence is proprietary. Database link: P51884 |
| ポジティブ・コントロール | WB: Saos-2, fetal skin, fetal heart, Jurkat, Y79 and HEK-293T lysates. IHC-P: Human kidney and Human skin tissues. ICC/IF: Saos-2 cells. Flow Cyt (intra): HEK-293T cells |
| 特記事項 | This product is a recombinant monoclonal antibody, which offers several advantages including: <ul style="list-style-type: none"> - High batch-to-batch consistency and reproducibility - Improved sensitivity and specificity - Long-term security of supply - Animal-free production For more information see here . Our RabMAb [®] technology is a patented hybridoma-based technology for making rabbit monoclonal antibodies. For details on our patents, please refer to RabMAb[®] patents . |

製品の特性

| | |
|-------|---|
| 製品の状態 | Liquid |
| 保存方法 | Shipped at 4°C. Store at +4°C short term (1-2 weeks). Upon delivery aliquot. Store at -20°C long term. Avoid freeze / thaw cycle. |
| バッファー | pH: 7.2 Preservative: 0.01% Sodium azide Constituents: 59% PBS, 40% Glycerol (glycerin, glycerine), 0.5% BSA |
| 精製度 | Protein A purified |
| ポリ/モノ | モノクローナル |

クローン名 EPR8898(2)

アイソタイプ IgG

アプリケーション

The Abpromise guarantee Abpromise保証は、次のテスト済みアプリケーションにおけるab168348の使用に適用されます
アプリケーションノートには、推奨の開始希釈率がありますが、適切な希釈率につきましてはご検討ください。

| アプリケーション | Abreviews | 特記事項 |
|------------------|-----------|--|
| Flow Cyt (Intra) | | 1/100 - 1/500. ab172730 - Rabbit monoclonal IgG, is suitable for use as an isotype control with this antibody. |
| WB | | 1/1000 - 1/5000. Detects a band of approximately 50 kDa (predicted molecular weight: 38 kDa). |
| IHC-P | ★★★★★ (6) | 1/50 - 1/100. Perform heat mediated antigen retrieval with citrate buffer pH 6 before commencing with IHC staining protocol. |
| ICC/IF | ★★★★★ (3) | 1/250 - 1/500. |

追加情報 Is unsuitable for IP.

ターゲット情報

組織特異性 Cornea and other tissues.

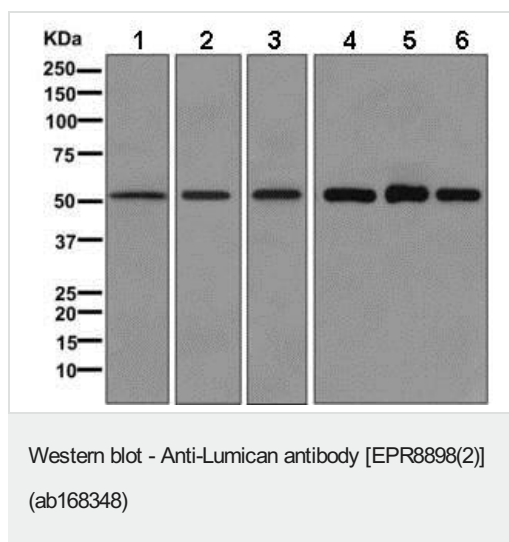
配列類似性 Belongs to the small leucine-rich proteoglycan (SLRP) family. SLRP class II subfamily.
Contains 11 LRR (leucine-rich) repeats.
Contains 1 LRRNT domain.

発生段階 Present in the extracellular matrix of human articular cartilage at all ages, although its abundance is far greater in the adult. In the adult cartilage lumican exists predominantly in a glycoprotein form lacking keratan sulfate, whereas the juvenile form of the molecule is a proteoglycan.

翻訳後修飾 Sulfated on tyrosine residue(s).

細胞内局在 Secreted > extracellular space > extracellular matrix.

画像



All lanes : Anti-Lumican antibody [EPR8898(2)] (ab168348) at 1/1000 dilution

Lane 1 : Saos-2 lysate

Lane 2 : Fetal skin lysate

Lane 3 : Fetal heart lysate

Lane 4 : Jurkat lysate

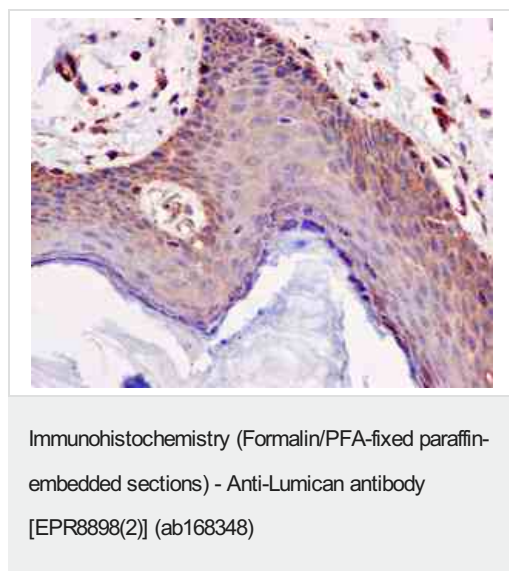
Lane 5 : Y79 lysate

Lane 6 : 293T lysate

Lysates/proteins at 10 µg per lane.

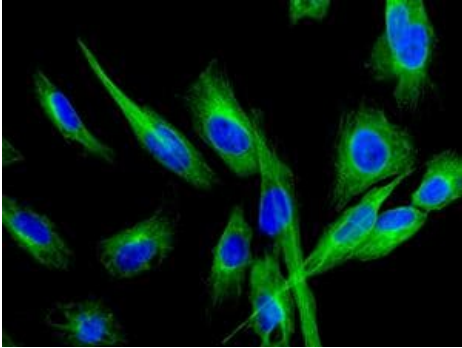
Predicted band size: 38 kDa

Additional bands at: 50 kDa. We are unsure as to the identity of these extra bands.



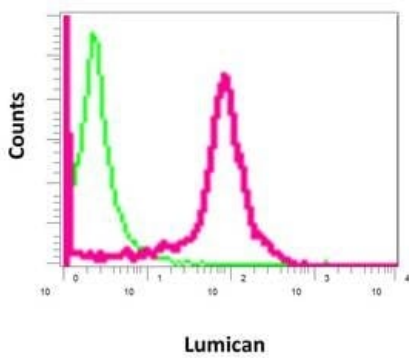
Immunohistochemical analysis of paraffin embedded Human skin tissue labeling Lumican with ab168348 at 1/50.

Perform heat mediated antigen retrieval with citrate buffer pH 6 before commencing with IHC staining protocol.



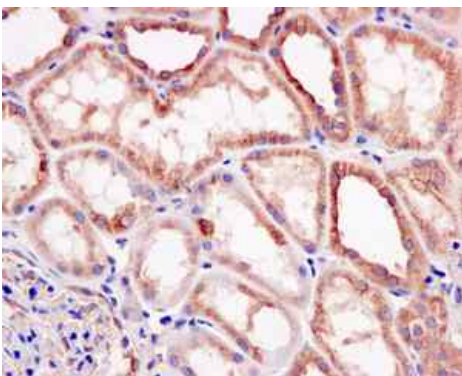
Immunocytochemistry/ Immunofluorescence - Anti-Lumican antibody [EPR8898(2)] (ab168348)

Immunofluorescent analysis of Saos-2 cells labeling Lumican with ab168348 at 1/250.



Flow Cytometry (Intracellular) - Anti-Lumican antibody [EPR8898(2)] (ab168348)

Intracellular flow cytometrical analysis of permeabilized 293T cells with ab168348 antibody at a dilution of 1/100 (red) or a rabbit IgG (negative) (green).



Immunohistochemistry (Formalin/PFA-fixed paraffin-embedded sections) - Anti-Lumican antibody [EPR8898(2)] (ab168348)

Immunohistochemical analysis of paraffin embedded Human kidney tissue labeling Lumican with ab168348 at 1/50.

Perform heat mediated antigen retrieval with citrate buffer pH 6 before commencing with IHC staining protocol.

Why choose a recombinant antibody?



Research with confidence
Consistent and reproducible results



Long-term and scalable supply
Recombinant technology



Success from the first experiment
Confirmed specificity



Ethical standards compliant
Animal-free production

Anti-Lumican antibody [EPR8898(2)] (ab168348)

Please note: All products are "FOR RESEARCH USE ONLY. NOT FOR USE IN DIAGNOSTIC PROCEDURES"

Our Abpromise to you: Quality guaranteed and expert technical support

- Replacement or refund for products not performing as stated on the datasheet
- Valid for 12 months from date of delivery
- Response to your inquiry within 24 hours
- We provide support in Chinese, English, French, German, Japanese and Spanish
- Extensive multi-media technical resources to help you
- We investigate all quality concerns to ensure our products perform to the highest standards

If the product does not perform as described on this datasheet, we will offer a refund or replacement. For full details of the Abpromise, please visit <https://www.abcam.co.jp/abpromise> or contact our technical team.

Terms and conditions

- Guarantee only valid for products bought direct from Abcam or one of our authorized distributors