

Anti-LTBP2 antibody ab121193

★★★★★ **3 Abreviews** **10 References** 画像数 **2**

製品の概要

製品名	Anti-LTBP2 antibody
製品の詳細	Rabbit polyclonal to LTBP2
由来種	Rabbit
アプリケーション	適用あり: ICC, IHC-P
種交差性	交差種: Human
免疫原	antigen sequence, corresponding to internal sequence amino acids 241-376 of Human LTBP2.
ポジティブ・コントロール	IHC-P: Human lung tissue; ICC: U-2 OS cells.
特記事項	<p>The Life Science industry has been in the grips of a reproducibility crisis for a number of years. Abcam is leading the way in addressing this with our range of recombinant monoclonal antibodies and knockout edited cell lines for gold-standard validation. Please check that this product meets your needs before purchasing.</p> <p>If you have any questions, special requirements or concerns, please send us an inquiry and/or contact our Support team ahead of purchase. Recommended alternatives for this product can be found below, along with publications, customer reviews and Q&As</p>

製品の特性

製品の状態	Liquid
保存方法	Shipped at 4°C. Upon delivery aliquot and store at -20°C. Avoid freeze / thaw cycles.
バッファー	pH: 7.20 Preservative: 0.02% Sodium azide Constituents: 59% PBS, 40% Glycerol (glycerin, glycerine)
精製度	Immunogen affinity purified
ポリ/モノ	ポリクローナル
アイソタイプ	IgG

アプリケーション

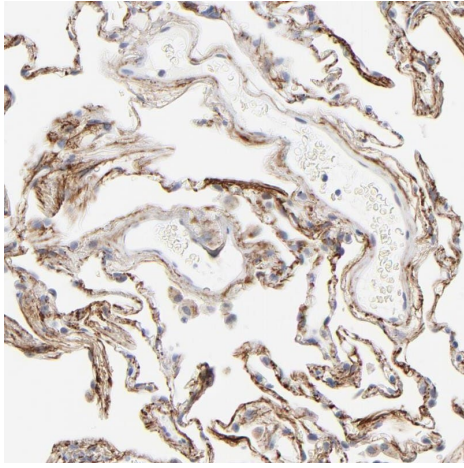
The Abpromise guarantee **Abpromise保証は、** 次のテスト済みアプリケーションにおけるab121193の使用に適用されます
アプリケーションノートには、推奨の開始希釈率がありますが、適切な希釈率につきましてはご検討ください。

アプリケーション	Abreviews	特記事項
ICC		Use a concentration of 0.25 - 2 µg/ml.
IHC-P		1/500 - 1/1000. Perform heat mediated antigen retrieval with citrate buffer pH 6 before commencing with IHC staining protocol.

ターゲット情報

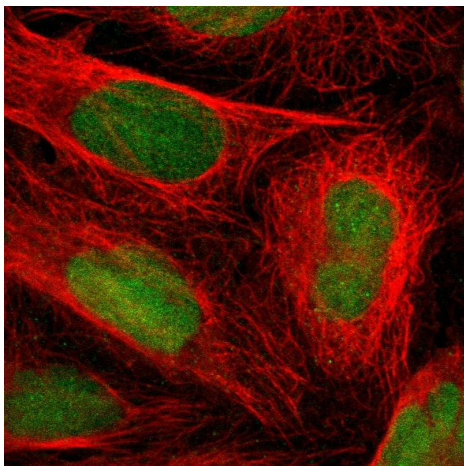
機能	May play an integral structural role in elastic-fiber architectural organization and/or assembly.
組織特異性	Expressed in lung, weakly expressed in heart, placenta, liver and skeletal muscle.
関連疾患	<p>Defects in LTBP2 are the cause of primary congenital glaucoma type 3D (GLC3D) [MIM:613086]. An autosomal recessive form of primary congenital glaucoma (PCG). PCG is characterized by marked increase of intraocular pressure at birth or early childhood, large ocular globes (buphthalmos) and corneal edema. It results from developmental defects of the trabecular meshwork and anterior chamber angle of the eye that prevent adequate drainage of aqueous humor.</p> <p>Defects in LTBP2 are the cause of microspherophakia (MCSPH) [MIM:251750]. It is a rare disease characterized by smaller and more spherical lenses than normal bilaterally, an increased anteroposterior thickness of the lens and highly myopic eyes. Lens dislocation or subluxation may occur, leading to defective accommodation.</p>
配列類似性	<p>Belongs to the LTBP family.</p> <p>Contains 20 EGF-like domains.</p> <p>Contains 4 TB (TGF-beta binding) domains.</p>
ドメイン	Associates covalently with small latent TGF-beta complex via Repeat B and Repeat C.
翻訳後修飾	Contains hydroxylated asparagine residues.
細胞内局在	Secreted. Localized in nuchal ligament and aorta to the fibrillin-containing, microfibrillar component of elastic fibers.

画像



Immunohistochemistry (Formalin/PFA-fixed paraffin-embedded sections) - Anti-LTBP2 antibody (ab121193)

Immunohistochemistry (Formalin/PFA-fixed paraffin-embedded sections) analysis of human lung tissue labelling MLTBP2 with ab121193 at 1/500 dilution. Heat mediated antigen retrieval performed with citrate buffer pH 6 before commencing with IHC staining protocol.



Immunocytochemistry - Anti-LTBP2 antibody (ab121193)

Immunocytochemistry analysis of U-2 OS (human bone osteosarcoma epithelial cell line) cells labelling MLTBP2 with ab121193 at 2 µg/mL.

Please note: All products are "FOR RESEARCH USE ONLY. NOT FOR USE IN DIAGNOSTIC PROCEDURES"

Our Abpromise to you: Quality guaranteed and expert technical support

- Replacement or refund for products not performing as stated on the datasheet
- Valid for 12 months from date of delivery
- Response to your inquiry within 24 hours
- We provide support in Chinese, English, French, German, Japanese and Spanish
- Extensive multi-media technical resources to help you
- We investigate all quality concerns to ensure our products perform to the highest standards

If the product does not perform as described on this datasheet, we will offer a refund or replacement. For full details of the Abpromise, please visit <https://www.abcam.co.jp/abpromise> or contact our technical team.

Terms and conditions

- Guarantee only valid for products bought direct from Abcam or one of our authorized distributors