


### Anti-LRRC4C antibody ab111572

★★★★★ 2 Abreviews 両俵数 3

医薬用外劇物

#### 製品の概要

製品名	Anti-LRRC4C antibody
製品の詳細	Rabbit polyclonal to LRRC4C
由来種	Rabbit
アプリケーション	適用あり: WB, ICC/IF, IHC-P
種交差性	交差種: Human 交差が予測される動物種: Mouse, Rat, Zebrafish 
免疫原	Recombinant fragment corresponding to Human LRRC4C aa 5-195.
ポジティブ・コントロール	NT2D1, IMR32, U-87 MG and MCF7 cells and whole cell lysates; Human breast cancer tissue.
特記事項	<p>The Life Science industry has been in the grips of a reproducibility crisis for a number of years. Abcam is leading the way in addressing this with our range of recombinant monoclonal antibodies and knockout edited cell lines for gold-standard validation. Please check that this product meets your needs before purchasing.</p> <p>If you have any questions, special requirements or concerns, please send us an inquiry and/or contact our Support team ahead of purchase. Recommended alternatives for this product can be found below, along with publications, customer reviews and Q&amp;As</p>

#### 製品の特性

製品の状態	Liquid
保存方法	Shipped at 4°C. Upon delivery aliquot and store at -20°C or -80°C. Avoid repeated freeze / thaw cycles.
バッファー	pH: 7.00 Preservative: 0.01% Thimerosal (merthiolate) Constituents: 1.21% Tris, 0.75% Glycine, 20% Glycerol (glycerin, glycerine)
精製度	Immunogen affinity purified
ポリ/モノ	ポリクローナル
アイソタイプ	IgG

## アプリケーション

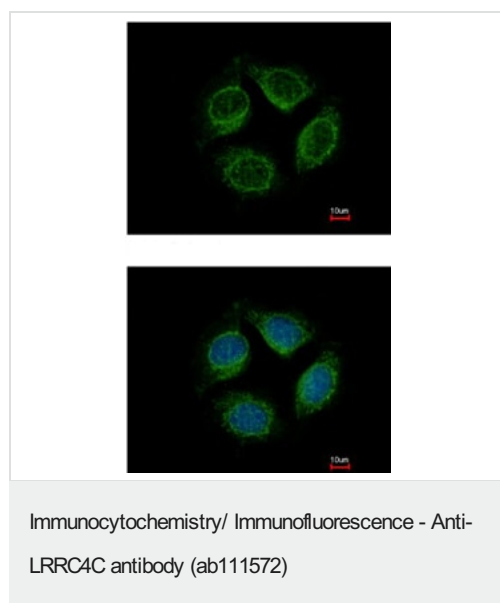
**The Abpromise guarantee** Abpromise保証は、次のテスト済みアプリケーションにおけるab111572の使用に適用されます  
アプリケーションノートには、推奨の開始希釈率がありますが、適切な希釈率につきましてはご確認ください。

アプリケーション	Abreviews	特記事項
WB		1/500 - 1/3000. Predicted molecular weight: 72 kDa.
ICC/IF		1/100 - 1/500.
IHC-P		1/100 - 1/500. Perform heat mediated antigen retrieval with citrate buffer pH 6 before commencing with IHC staining protocol. Alternative antigen retrieval method: heat mediated Tris-EDTA buffer, pH 8.0

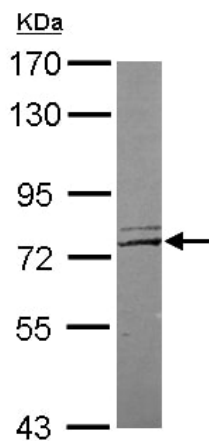
## ターゲット情報

機能	May promote neurite outgrowth of developing thalamic neurons.
組織特異性	Highly expressed in the cerebral cortex, including frontal, parietal and occipital lobes. Putamen, amygdala, hippocampus and medulla oblongata show moderate expression. Caudate nucleus and thalamus express small amounts, whereas other brain regions show very weak or no expression.
配列類似性	Contains 1 Ig-like C2-type (immunoglobulin-like) domain. Contains 9 LRR (leucine-rich) repeats. Contains 1 LRRCT domain. Contains 1 LRRNT domain.
ドメイン	The LRR region is both necessary and sufficient for the interaction with NTNG1.
細胞内局在	Cell junction, synapse, postsynaptic cell membrane.

## 画像



ab111572 at 1/500 dilution staining LRRC4C in methanol-fixed MCF7 cells by Immunofluorescence. Lower image shows cells co-stained with Hoechst 33342.

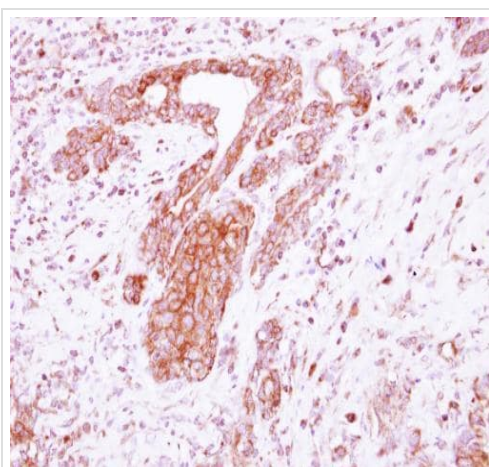


Western blot - Anti-LRRC4C antibody (ab111572)

Anti-LRRC4C antibody (ab111572) at 1/2000 dilution + MCF7 whole cell lysate at 30 µg

**Predicted band size:** 72 kDa

7.5% SDS-PAGE.



Immunohistochemistry (Formalin/PFA-fixed paraffin-embedded sections) - Anti-LRRC4C antibody (ab111572)

Paraffin-embedded human breast cancer tissue stained for LRRC4C using ab111572 at 1/250 dilution in Immunohistochemical analysis.

**Please note:** All products are "FOR RESEARCH USE ONLY. NOT FOR USE IN DIAGNOSTIC PROCEDURES"

### Our Abpromise to you: Quality guaranteed and expert technical support

- Replacement or refund for products not performing as stated on the datasheet
- Valid for 12 months from date of delivery
- Response to your inquiry within 24 hours
- We provide support in Chinese, English, French, German, Japanese and Spanish
- Extensive multi-media technical resources to help you
- We investigate all quality concerns to ensure our products perform to the highest standards

If the product does not perform as described on this datasheet, we will offer a refund or replacement. For full details of the Abpromise, please visit <https://www.abcam.co.jp/abpromise> or contact our technical team.

## Terms and conditions

---

- Guarantee only valid for products bought direct from Abcam or one of our authorized distributors