

Anti-LRFN2 antibody ab106366

画像数 4

製品の概要

製品名	Anti-LRFN2 antibody
製品の詳細	Rabbit polyclonal to LRFN2
由来種	Rabbit
アプリケーション	適用あり: ICC/IF, IHC-P, WB
種交差性	交差種: Mouse, Rat
免疫原	Synthetic peptide corresponding to Human LRFN2 (C terminal). 14 amino acid peptide Database link: Q9ULH4
ポジティブ・コントロール	Rat brain tissue lysate, Mouse brain tissue.
特記事項	<p>The Life Science industry has been in the grips of a reproducibility crisis for a number of years. Abcam is leading the way in addressing this with our range of recombinant monoclonal antibodies and knockout edited cell lines for gold-standard validation. Please check that this product meets your needs before purchasing.</p> <p>If you have any questions, special requirements or concerns, please send us an inquiry and/or contact our Support team ahead of purchase. Recommended alternatives for this product can be found below, along with publications, customer reviews and Q&As</p>

製品の特性

製品の状態	Liquid
保存方法	Shipped at 4°C. Store at 4°C (stable for up to 12 months).
バッファー	pH: 7.2 Preservative: 0.02% Sodium azide Constituent: PBS
精製度	Immunogen affinity purified
ポリ/モノ	ポリクローナル
アイソタイプ	IgG

アプリケーション

The Abpromise guarantee

Abpromise保証は、 次のテスト済みアプリケーションにおけるab106366の使用に適用されます

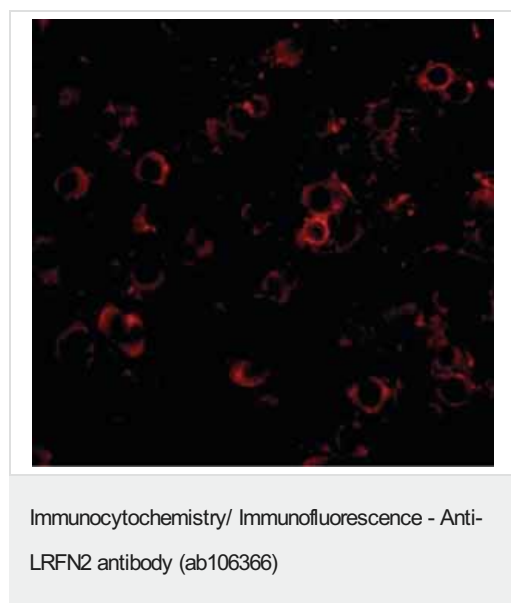
アプリケーションノートには、推奨の開始希釈率がありますが、適切な希釈率につきましてはご確認ください。

アプリケーション	Abreviews	特記事項
ICC/IF		Use a concentration of 20 µg/ml.
IHC-P		Use a concentration of 2.5 µg/ml. Perform heat mediated antigen retrieval via the microwave method before commencing with IHC staining protocol.
WB		Use a concentration of 1 µg/ml. Predicted molecular weight: 85 kDa.

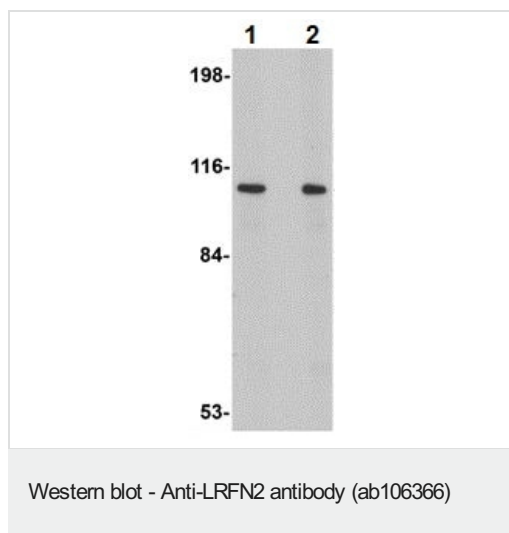
ターゲット情報

機能	Promotes neurite outgrowth in hippocampal neurons. Enhances the cell surface expression of 2 NMDA receptor subunits GRIN1 and GRIN2A. May play a role in redistributing DLG4 to the cell periphery.
配列類似性	Belongs to the LRFN family. Contains 1 fibronectin type-III domain. Contains 1 Ig-like (immunoglobulin-like) domain. Contains 7 LRR (leucine-rich) repeats. Contains 1 LRRCT domain. Contains 1 LRRNT domain.
ドメイン	The PDZ-binding motif is required for cell surface expression, neurite outgrowth promotion (By similarity). This motif is also involved in DLG1-, DLG3- and DLG4-binding.
翻訳後修飾	Glycosylated.
細胞内局在	Membrane. Cell junction > synapse. Cell junction > synapse > postsynaptic cell membrane.

画像



Immunofluorescence of LRFN2 in mouse brain tissue with ab106366 at 20 µg/mL.



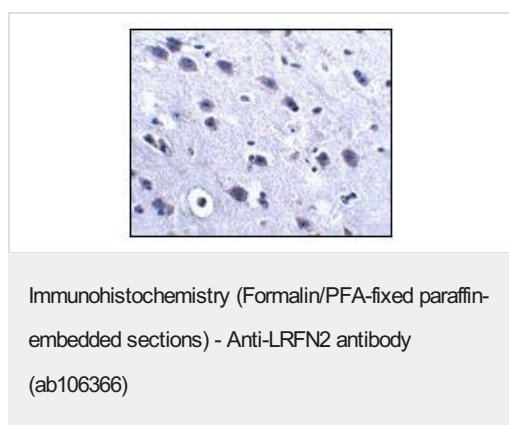
Lane 1 : Anti-LRFN2 antibody (ab106366) at 1 µg/ml

Lane 2 : Anti-LRFN2 antibody (ab106366) at 2 µg/ml

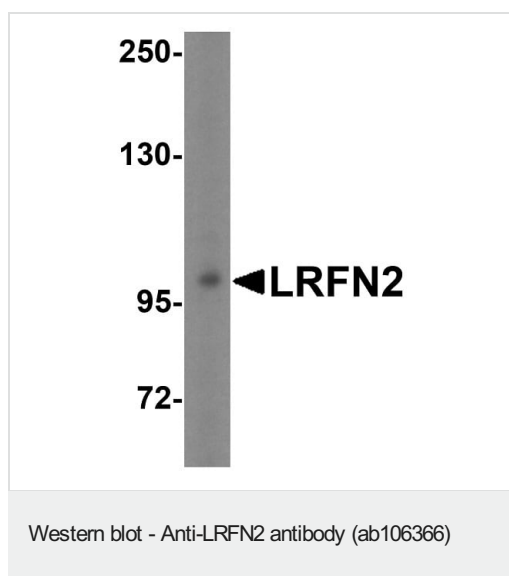
All lanes : Rat brain tissue lysate

Lysates/proteins at 15 µg/ml per lane.

Predicted band size: 85 kDa



ab106366, at 2.5 ug/ml, staining LRFN2 in Mouse brain tissue by immunohistochemistry.



Anti-LRFN2 antibody (ab106366) at 1 µg/ml + Mouse brain tissue lysate

Predicted band size: 85 kDa

Please note: All products are "FOR RESEARCH USE ONLY. NOT FOR USE IN DIAGNOSTIC PROCEDURES"

Our Abpromise to you: Quality guaranteed and expert technical support

- Replacement or refund for products not performing as stated on the datasheet
- Valid for 12 months from date of delivery

- Response to your inquiry within 24 hours
- We provide support in Chinese, English, French, German, Japanese and Spanish
- Extensive multi-media technical resources to help you
- We investigate all quality concerns to ensure our products perform to the highest standards

If the product does not perform as described on this datasheet, we will offer a refund or replacement. For full details of the Abpromise, please visit <https://www.abcam.co.jp/abpromise> or contact our technical team.

Terms and conditions

- Guarantee only valid for products bought direct from Abcam or one of our authorized distributors