

Anti-LRFN1 antibody ab106365

1 References [画像数 1](#)

製品の概要

製品名	Anti-LRFN1 antibody
製品の詳細	Rabbit polyclonal to LRFN1
由来種	Rabbit
アプリケーション	適用あり: WB
種交差性	交差種: Human
免疫原	Synthetic peptide corresponding to Human LRFN1 (C terminal). 18 amino acid peptide Database link: Q9P244
ポジティブ・コントロール	Human brain lysate,
特記事項	<p>The Life Science industry has been in the grips of a reproducibility crisis for a number of years. Abcam is leading the way in addressing this with our range of recombinant monoclonal antibodies and knockout edited cell lines for gold-standard validation. Please check that this product meets your needs before purchasing.</p> <p>If you have any questions, special requirements or concerns, please send us an inquiry and/or contact our Support team ahead of purchase. Recommended alternatives for this product can be found below, along with publications, customer reviews and Q&As</p>

製品の特性

製品の状態	Liquid
保存方法	Shipped at 4°C. Store at 4°C (stable for up to 12 months).
バッファー	pH: 7.2 Preservative: 0.02% Sodium azide Constituent: PBS
精製度	Immunogen affinity purified
ポリ/モノ	ポリクローナル
アイソタイプ	IgG

アプリケーション

The Abpromise guarantee

Abpromise保証は、次のテスト済みアプリケーションにおけるab106365の使用に適用されます

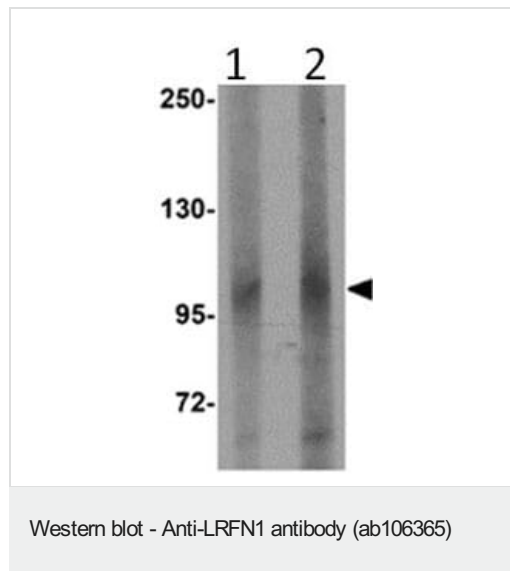
アプリケーションノートには、推奨の開始希釈率がありますが、適切な希釈率につきましてはご確認ください。

アプリケーション	Abreviews	特記事項
WB		Use a concentration of 1 - 2 µg/ml. Predicted molecular weight: 82 kDa.

ターゲット情報

機能	Promotes neurite outgrowth in hippocampal neurons. Involved in the regulation and maintenance of excitatory synapses. Induces the clustering of excitatory postsynaptic proteins, including DLG4, DLGAP1, GRIA1 and GRIN1.
配列類似性	Belongs to the LRFN family. Contains 1 fibronectin type-III domain. Contains 1 Ig-like (immunoglobulin-like) domain. Contains 7 LRR (leucine-rich) repeats. Contains 1 LRRCT domain. Contains 1 LRRNT domain.
ドメイン	The PDZ-binding motif is required for neurite outgrowth promotion and for DLG1-, DLG3- and DLG4-binding.
翻訳後修飾	Glycosylated.
細胞内局在	Membrane. Cell junction, synapse. Cell junction, synapse, postsynaptic cell membrane, postsynaptic density. Detected in excitatory, but not inhibitory, synaptic plasma membrane.

画像



Lane 1 : Anti-LRFN1 antibody (ab106365) at 1 µg/ml

Lane 2 : Anti-LRFN1 antibody (ab106365) at 2 µg/ml

All lanes : Human brain lysate

Lysates/proteins at 15 µg per lane.

Predicted band size: 82 kDa

Please note: All products are "FOR RESEARCH USE ONLY. NOT FOR USE IN DIAGNOSTIC PROCEDURES"

Our Abpromise to you: Quality guaranteed and expert technical support

- Replacement or refund for products not performing as stated on the datasheet
- Valid for 12 months from date of delivery
- Response to your inquiry within 24 hours
- We provide support in Chinese, English, French, German, Japanese and Spanish
- Extensive multi-media technical resources to help you
- We investigate all quality concerns to ensure our products perform to the highest standards

If the product does not perform as described on this datasheet, we will offer a refund or replacement. For full details of the Abpromise, please visit <https://www.abcam.co.jp/abpromise> or contact our technical team.

Terms and conditions

- Guarantee only valid for products bought direct from Abcam or one of our authorized distributors