


Anti-LOX 1 antibody [23C11] ab81709

8 References [画像数 2](#)

製品の概要

製品名	Anti-LOX 1 antibody [23C11]
製品の詳細	Mouse monoclonal [23C11] to LOX 1
由来種	Mouse
アプリケーション	適用あり: Flow Cyt, IHC-P
種交差性	交差種: Human 交差が予測される動物種: Mouse 
免疫原	Recombinant fragment within Human LOX 1 aa 50-300 (extracellular). The exact immunogen sequence used to generate this antibody is proprietary information. If additional detail on the immunogen is needed to determine the suitability of the antibody for your needs, please <u>contact</u> our Scientific Support team to discuss your requirements.
ポジティブ・コントロール	IHC-P: human spleen cells. Human APCs
特記事項	<p>ab81709 neutralizes the biological activity of LOX 1. It also inhibits Hsp70 binding to dendritic cells and Hsp70 induced antigen cross representation. <i>In vivo</i>, targeting LOX1 with a tumor antigen using anti LOX 1 antibody ab81709 induces anti tumor immunity.</p> <p>The Life Science industry has been in the grips of a reproducibility crisis for a number of years. Abcam is leading the way in addressing this with our range of recombinant monoclonal antibodies and knockout edited cell lines for gold-standard validation. Please check that this product meets your needs before purchasing.</p> <p>If you have any questions, special requirements or concerns, please send us an inquiry and/or contact our Support team ahead of purchase. Recommended alternatives for this product can be found below, along with publications, customer reviews and Q&As</p>

製品の特性

製品の状態	Liquid
保存方法	Shipped at 4°C. Upon delivery aliquot and store at -20°C. Avoid freeze / thaw cycles.
バッファー	Constituents: 0.1% BSA, PBS
特記事項 (精製)	Purified and 0.2 µm filtered solution.
一次抗体 備考	ab81709 neutralizes the biological activity of LOX 1. It also inhibits Hsp70 binding to dendritic

cells and Hsp70 induced antigen cross representation. *In vivo*, targeting LOX1 with a tumor antigen using anti LOX 1 antibody ab81709 induces anti tumor immunity.

ポリ/モノ	モノクローナル
クローン名	23C11
アイソタイプ	IgG1

アプリケーション

The Abpromise guarantee **Abpromise保証は、次のテスト済みアプリケーションにおけるab81709の使用に適用されます**
アプリケーションノートには、推奨の開始希釈率がありますが、適切な希釈率につきましてはご確認ください。

アプリケーション	Abreviews	特記事項
Flow Cyt		Use a concentration of 10 µg/ml. ab170190 - Mouse monoclonal IgG1, is suitable for use as an isotype control with this antibody.
IHC-P		1/100.

ターゲット情報

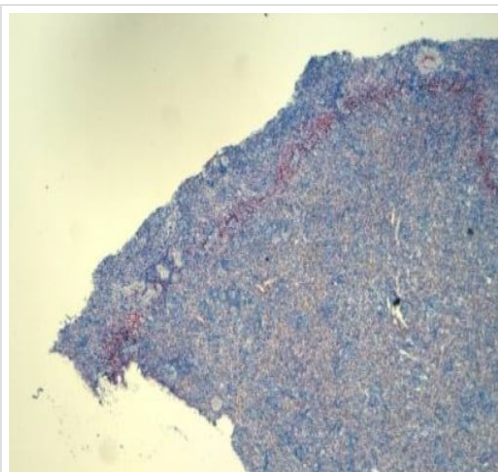
機能	Receptor that mediates the recognition, internalization and degradation of oxidatively modified low density lipoprotein (oxLDL) by vascular endothelial cells. OxLDL is a marker of atherosclerosis that induces vascular endothelial cell activation and dysfunction, resulting in pro-inflammatory responses, pro-oxidative conditions and apoptosis. Its association with oxLDL induces the activation of NF-kappa-B through an increased production of intracellular reactive oxygen and a variety of pro-atherogenic cellular responses including a reduction of nitric oxide (NO) release, monocyte adhesion and apoptosis. In addition to binding oxLDL, it acts as a receptor for the HSP70 protein involved in antigen cross-presentation to naive T-cells in dendritic cells, thereby participating in cell-mediated antigen cross-presentation. Also involved in inflammatory process, by acting as a leukocyte-adhesion molecule at the vascular interface in endotoxin-induced inflammation. Also acts as a receptor for advanced glycation end (AGE) products, activated platelets, monocytes, apoptotic cells and both Gram-negative and Gram-positive bacteria.
組織特異性	Expressed at high level in endothelial cells and vascular-rich organs such as placenta, lung, liver and brain, aortic intima, bone marrow, spinal cord and substantia nigra. Also expressed at the surface of dendritic cells. Widely expressed at intermediate and low level.
関連疾患	Note=Independent association genetic studies have implicated OLR1 gene variants in myocardial infarction susceptibility. Note=OLR1 may be involved in Alzheimer disease (AD). Involvement in AD is however unclear: according to some authors (PubMed:12354387, PubMed:12810610 and PubMed:15976314), variations in OLR1 modify the risk of AD, while according to other (PubMed:15000751 and PubMed:15060104) they do not.
配列類似性	Contains 1 C-type lectin domain.
ドメイン	The cytoplasmic region is required for subcellular sorting on the cell surface. The C-type lectin domain mediates the recognition and binding of oxLDL.
翻訳後修飾	The intrachain disulfide-bonds prevent N-glycosylation at some sites.

N-glycosylated.

細胞内局在

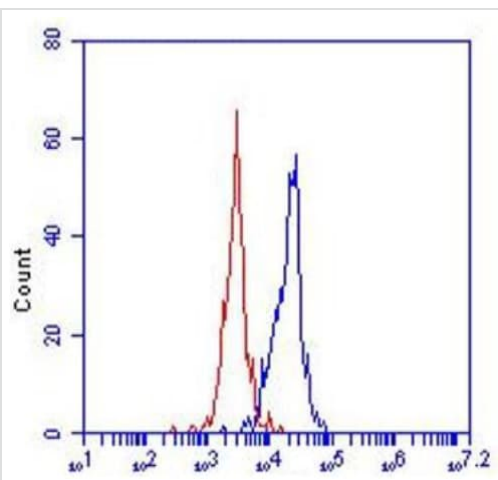
Cell membrane. Secreted. A secreted form also exists.

画像



Immunohistochemical analysis of human LOX-1 with ab81709 (1:100) in paraffin embedded spleen tissue.

Immunohistochemistry (Formalin/PFA-fixed paraffin-embedded sections) - Anti-LOX 1 antibody [23C11] (ab81709)



ab81709 was conjugated to PE and used in flow cytometry with PBMC cells. The red line represents the isotype control and the blue line HM2138

Flow Cytometry - Anti-LOX 1 antibody [23C11] (ab81709)

Please note: All products are "FOR RESEARCH USE ONLY. NOT FOR USE IN DIAGNOSTIC PROCEDURES"

Our Abpromise to you: Quality guaranteed and expert technical support

- Replacement or refund for products not performing as stated on the datasheet
- Valid for 12 months from date of delivery
- Response to your inquiry within 24 hours

- We provide support in Chinese, English, French, German, Japanese and Spanish
- Extensive multi-media technical resources to help you
- We investigate all quality concerns to ensure our products perform to the highest standards

If the product does not perform as described on this datasheet, we will offer a refund or replacement. For full details of the Abpromise, please visit <https://www.abcam.co.jp/abpromise> or contact our technical team.

Terms and conditions

- Guarantee only valid for products bought direct from Abcam or one of our authorized distributors