


Anti-LOK antibody ab70483

画像数 2

製品の概要

製品名	Anti-LOK antibody
製品の詳細	Rabbit polyclonal to LOK
由来種	Rabbit
特異性	We have data to indicate that this antibody may not cross react with Mouse. However, this has not been conclusively tested and expression levels may vary in certain cell lines/tissues.
アプリケーション	適用あり: WB, IP
種交差性	交差種: Human 交差が予測される動物種: Chimpanzee 
免疫原	Synthetic peptide, corresponding to a region between amino acids 350-400 of Human LOK
ポジティブ・コントロール	Whole cell lysate from HeLa cells
特記事項	<p>The Life Science industry has been in the grips of a reproducibility crisis for a number of years. Abcam is leading the way in addressing this with our range of recombinant monoclonal antibodies and knockout edited cell lines for gold-standard validation. Please check that this product meets your needs before purchasing.</p> <p>If you have any questions, special requirements or concerns, please send us an inquiry and/or contact our Support team ahead of purchase. Recommended alternatives for this product can be found below, along with publications, customer reviews and Q&As</p>

製品の特性

製品の状態	Liquid
保存方法	Shipped at 4°C. Upon delivery aliquot and store at -20°C. Avoid freeze / thaw cycles.
バッファー	pH: 7 Preservative: 0.09% Sodium azide Constituents: 1.815% Tris, 1.764% Sodium citrate, 0.021% PBS
精製度	Immunogen affinity purified
ポリ/モノ	ポリクローナル
アイソタイプ	IgG

アプリケーション

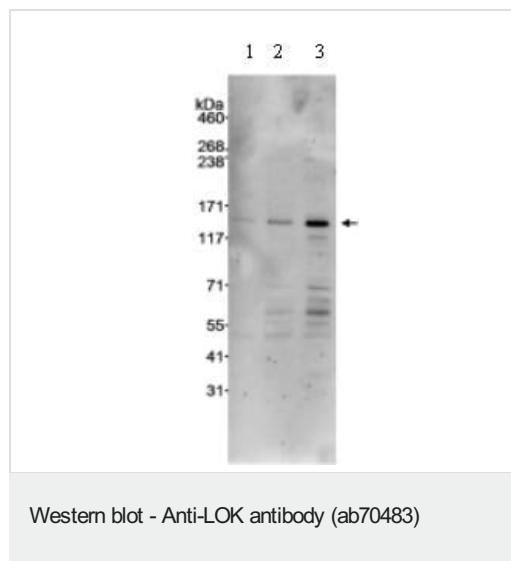
The Abpromise guarantee **Abpromise保証は、** 次のテスト済みアプリケーションにおけるab70483の使用に適用されます
 アプリケーションノートには、推奨の開始希釈率がありますが、適切な希釈率につきましてはご検討ください。

アプリケーション	Abreviews	特記事項
WB		1/2000 - 1/15000. Predicted molecular weight: 112 kDa.
IP		Use at 1-4 µg/mg of lysate.

ターゲット情報

機能	Can act on substrates such as myelin basic protein and histone 2A on serine and threonine residues.
組織特異性	Expressed predominantly in lymphoid organs.
配列類似性	Belongs to the protein kinase superfamily. STE Ser/Thr protein kinase family. STE20 subfamily. Contains 1 protein kinase domain.
翻訳後修飾	Autophosphorylated.

画像



All lanes : Anti-LOK antibody (ab70483) at 0.1 µg/ml

Lane 1 : Whole cell lysate from HeLa cells at 5 µg

Lane 2 : Whole cell lysate from HeLa cells at 15 µg

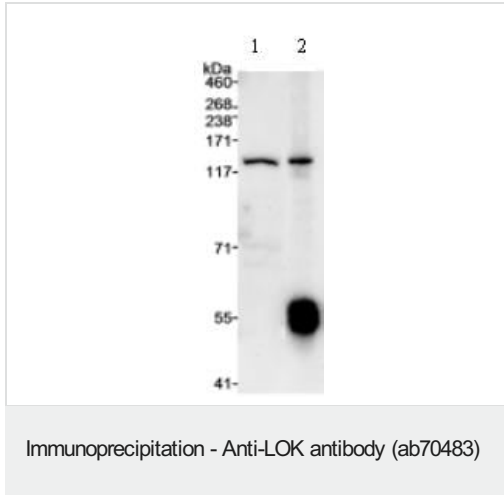
Lane 3 : Whole cell lysate from HeLa cells at 50 µg

Developed using the ECL technique.

Predicted band size: 112 kDa

Observed band size: 112 kDa

Chemiluminescence with exposure times of 1 to 2 minutes.



Detection of Human LOK by Immunoprecipitation in Whole cell lysate from HeLa cells (1 mg for IP), using ab70483 at 1 µg/mg lysate for IP.

Lane 1: input of Human LOK at 50µg

Lane 2: ab70483 at 1 µg/mg lysate

Chemiluminescence with exposure times of 1 to 2 minutes.

Please note: All products are "FOR RESEARCH USE ONLY. NOT FOR USE IN DIAGNOSTIC PROCEDURES"

Our Abpromise to you: Quality guaranteed and expert technical support

- Replacement or refund for products not performing as stated on the datasheet
- Valid for 12 months from date of delivery
- Response to your inquiry within 24 hours
- We provide support in Chinese, English, French, German, Japanese and Spanish
- Extensive multi-media technical resources to help you
- We investigate all quality concerns to ensure our products perform to the highest standards

If the product does not perform as described on this datasheet, we will offer a refund or replacement. For full details of the Abpromise, please visit <https://www.abcam.co.jp/abpromise> or contact our technical team.

Terms and conditions

- Guarantee only valid for products bought direct from Abcam or one of our authorized distributors