

Anti-LMCD1 antibody ab121788

画像数 3

製品の概要

製品名	Anti-LMCD1 antibody
製品の詳細	Rabbit polyclonal to LMCD1
由来種	Rabbit
アプリケーション	適用あり: ICC/IF, WB, IHC-P
種交差性	交差種: Human
免疫原	antigen sequence, corresponding to amino acids 160-293 of Human LMCD1.
ポジティブ・コントロール	Human cerebellum tissue; RT-4, U-251 MG cell lysate; Human Liver and Tonsil lysates.
特記事項	<p>The Life Science industry has been in the grips of a reproducibility crisis for a number of years. Abcam is leading the way in addressing this with our range of recombinant monoclonal antibodies and knockout edited cell lines for gold-standard validation. Please check that this product meets your needs before purchasing.</p> <p>If you have any questions, special requirements or concerns, please send us an inquiry and/or contact our Support team ahead of purchase. Recommended alternatives for this product can be found below, along with publications, customer reviews and Q&As</p>

製品の特性

製品の状態	Liquid
保存方法	Shipped at 4°C. Upon delivery aliquot and store at -20°C. Avoid freeze / thaw cycles.
バッファー	pH: 7.20 Preservative: 0.02% Sodium azide Constituents: 59% PBS, 40% Glycerol (glycerin, glycerine)
精製度	Immunogen affinity purified
ポリ/モノ	ポリクローナル
アイソタイプ	IgG

アプリケーション

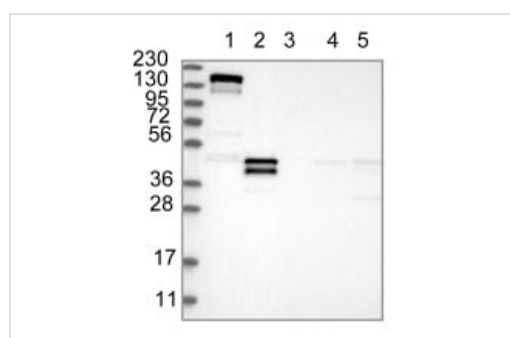
The Abpromise guarantee **Abpromise保証は、次のテスト済みアプリケーションにおけるab121788の使用に適用されず**
アプリケーションノートには、推奨の開始希釈率がありますが、適切な希釈率につきましてはご検討ください。

アプリケーション	Abreviews	特記事項
ICC/IF		Use a concentration of 0.25 - 2 µg/ml.
WB		Use a concentration of 0.04 - 0.4 µg/ml.
IHC-P		1/200 - 1/500. Perform heat mediated antigen retrieval with citrate buffer pH 6 before commencing with IHC staining protocol.

ターゲット情報

機能	Transcriptional cofactor that restricts GATA6 function by inhibiting DNA-binding, resulting in repression of GATA6 transcriptional activation of downstream target genes. Represses GATA6-mediated trans activation of lung- and cardiac tissue-specific promoters. Inhibits DNA-binding by GATA4 and GATA1 to the cTNC promoter (By similarity). Plays a critical role in the development of cardiac hypertrophy via activation of calcineurin/nuclear factor of activated T cells signaling pathway.
組織特異性	Expressed in the heart (at protein level). Expressed in many tissues with highest abundance in skeletal muscle.
配列類似性	Contains 2 LIM zinc-binding domains. Contains 1 PET domain.
ドメイン	The LIM zinc-binding domains and the Cys-rich region mediate interaction with GATA6.
細胞内局在	Cytoplasm. Nucleus. May shuttle between the cytoplasm and the nucleus.

画像



Western blot - Anti-LMCD1 antibody (ab121788)

All lanes : Anti-LMCD1 antibody (ab121788) at 1/250 dilution

Lane 1 : RT-4 cell lysate

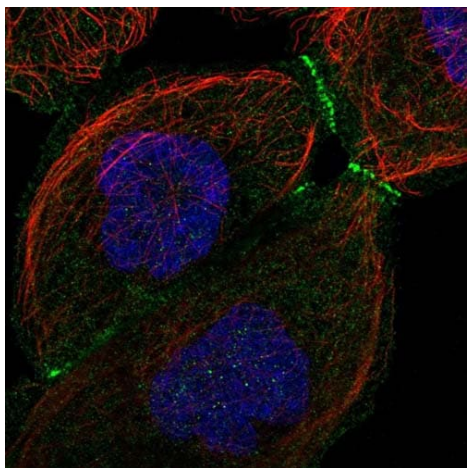
Lane 2 : U-251 MG cell lysate

Lane 3 : Human Plasma

Lane 4 : Human Liver lysate

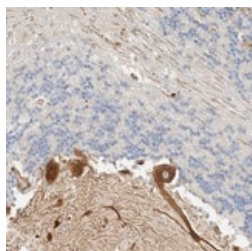
Lane 5 : Human Tonsil lysate

Developed using the ECL technique.



Immunocytochemistry/ Immunofluorescence - Anti-LMCD1 antibody (ab121788)

Immunofluorescent staining of Human cell line A-431 shows positivity in plasma membrane and cell junctions. Recommended concentration of ab121788 1-4 µg/ml. Cells treated with PFA/Triton X-100.



Immunohistochemistry (Formalin/PFA-fixed paraffin-embedded sections) - Anti-LMCD1 antibody (ab121788)

ab121788, at 1/400 dilution, staining LMCD1 in paraffin-embedded Human cerebellum tissue, by Immunohistochemistry.

Please note: All products are "FOR RESEARCH USE ONLY. NOT FOR USE IN DIAGNOSTIC PROCEDURES"

Our Abpromise to you: Quality guaranteed and expert technical support

- Replacement or refund for products not performing as stated on the datasheet
- Valid for 12 months from date of delivery
- Response to your inquiry within 24 hours

- We provide support in Chinese, English, French, German, Japanese and Spanish
- Extensive multi-media technical resources to help you
- We investigate all quality concerns to ensure our products perform to the highest standards

If the product does not perform as described on this datasheet, we will offer a refund or replacement. For full details of the Abpromise, please visit <https://www.abcam.co.jp/abpromise> or contact our technical team.

Terms and conditions

- Guarantee only valid for products bought direct from Abcam or one of our authorized distributors