

Anti-LMBRD1 antibody ab105419

画像数 3

製品の概要

製品名	Anti-LMBRD1 antibody
製品の詳細	Rabbit polyclonal to LMBRD1
由来種	Rabbit
特異性	LMBRD1 antibody is predicted to not cross-react with other LMBRD1 family members.
アプリケーション	適用あり: ICC/IF, WB, IHC-P
種交差性	交差種: Human
免疫原	An 18 amino acid peptide from the C-terminus of Human LMBRD1 (NP_060838)
ポジティブ・コントロール	Human Brain Tissue Lysate
特記事項	<p>The Life Science industry has been in the grips of a reproducibility crisis for a number of years. Abcam is leading the way in addressing this with our range of recombinant monoclonal antibodies and knockout edited cell lines for gold-standard validation. Please check that this product meets your needs before purchasing.</p> <p>If you have any questions, special requirements or concerns, please send us an inquiry and/or contact our Support team ahead of purchase. Recommended alternatives for this product can be found below, along with publications, customer reviews and Q&As</p>

製品の特性

製品の状態	Liquid
保存方法	Shipped at 4°C. Store at +4°C.
バッファー	pH: 7.2 Preservative: 0.02% Sodium azide Constituent: PBS
精製度	Immunogen affinity purified
ポリ/モノ	ポリクローナル
アイソタイプ	IgG

アプリケーション

The Abpromise guarantee

Abpromise保証は、次のテスト済みアプリケーションにおけるab105419の使用に適用されます

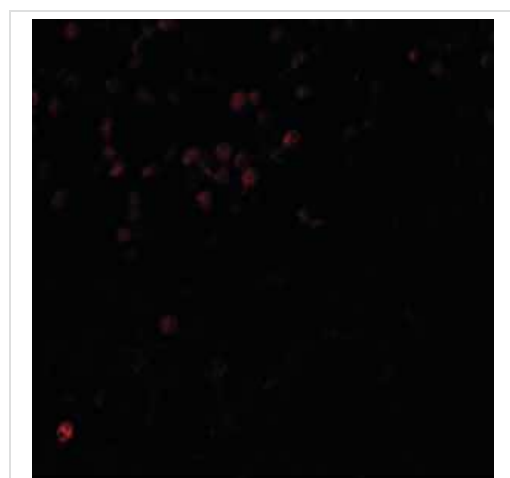
アプリケーションノートには、推奨の開始希釈率がありますが、適切な希釈率につきましてはご確認ください。

アプリケーション	Abreviews	特記事項
ICC/IF		Use a concentration of 20 µg/ml.
WB		Use a concentration of 1 - 2 µg/ml. Predicted molecular weight: 61 kDa.
IHC-P		Use at an assay dependent concentration.

ターゲット情報

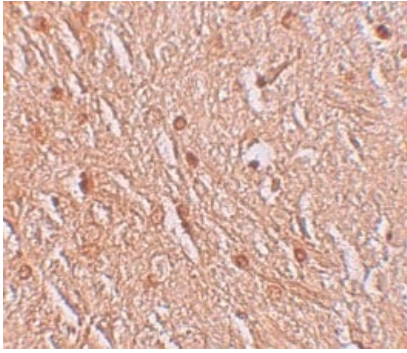
機能	Probable lysosomal cobalamin transporter. Required to export cobalamin from lysosomes allowing its conversion to cofactors. Isoform 3 may play a role in the assembly of hepatitis delta virus (HDV).
組織特異性	Isoform 3 is expressed in liver.
関連疾患	Defects in LMBRD1 are the cause of methylmalonic aciduria and homocystinuria type cbIF (MMAFHC) [MIM:277380]; also known as homocystinuria-megaloblastic anemia complementation type F. MMAFHC is a disorder of cobalamin metabolism characterized by decreased levels of the coenzymes adenosylcobalamin (AdoCbl) and methylcobalamin (MeCbl). It is due to accumulation of free cobalamin in lysosomes, thus hindering its conversion to cofactors. Clinical features include developmental delay, stomatitis, glossitis, seizures and methylmalonic aciduria responsive to vitamin B12.
配列類似性	Belongs to the LMR family. LMBRD1 subfamily.
翻訳後修飾	N-glycosylated.
細胞内局在	Lysosome membrane.

画像



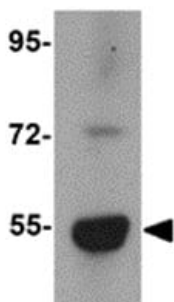
Immunofluorescence of LMBRD1 in Human brain tissue with ab105419 at 20 ug/mL.

Immunocytochemistry/ Immunofluorescence - Anti-LMBRD1 antibody (ab105419)



Immunohistochemistry of LMBRD1 in Human brain tissue with ab105419 at 2.5 µg/mL.

Immunohistochemistry (Formalin/PFA-fixed paraffin-embedded sections) - Anti-LMBRD1 antibody (ab105419)



Anti-LMBRD1 antibody (ab105419) at 1 µg/ml + Human brain tissue lysate at 15 µg

Predicted band size: 61 kDa

Western blot - Anti-LMBRD1 antibody (ab105419)

Please note: All products are "FOR RESEARCH USE ONLY. NOT FOR USE IN DIAGNOSTIC PROCEDURES"

Our Abpromise to you: Quality guaranteed and expert technical support

- Replacement or refund for products not performing as stated on the datasheet
- Valid for 12 months from date of delivery
- Response to your inquiry within 24 hours
- We provide support in Chinese, English, French, German, Japanese and Spanish
- Extensive multi-media technical resources to help you
- We investigate all quality concerns to ensure our products perform to the highest standards

If the product does not perform as described on this datasheet, we will offer a refund or replacement. For full details of the Abpromise, please visit <https://www.abcam.co.jp/abpromise> or contact our technical team.

Terms and conditions

- Guarantee only valid for products bought direct from Abcam or one of our authorized distributors