

Anti-LMAN1 antibody ab32583

画像数 5

製品の概要

製品名	Anti-LMAN1 antibody
製品の詳細	Rabbit polyclonal to LMAN1
由来種	Rabbit
アプリケーション	適用あり: ICC/IF, WB
種交差性	交差種: Mouse, Rat, Human
免疫原	Synthetic peptide: FDSFDNDGKKNPAI , corresponding to amino acids 159-173 of Rat LMAN1 Run BLAST with Run BLAST with
ポジティブ・コントロール	ICC: p19 cells, HMVEC cells, A549 cells. WB: Rat brain lysate. HepG2, HeLa, PANC-1, and MCF7 lysate.
特記事項	<p>The Life Science industry has been in the grips of a reproducibility crisis for a number of years. Abcam is leading the way in addressing this with our range of recombinant monoclonal antibodies and knockout edited cell lines for gold-standard validation. Please check that this product meets your needs before purchasing.</p> <p>If you have any questions, special requirements or concerns, please send us an inquiry and/or contact our Support team ahead of purchase. Recommended alternatives for this product can be found below, along with publications, customer reviews and Q&As</p>

製品の特性

製品の状態	Liquid
保存方法	Shipped at 4°C. Upon delivery aliquot and store at -20°C. Avoid freeze / thaw cycles.
バッファー	Preservative: 0.05% Sodium azide Constituents: PBS, 0.1% BSA
精製度	Immunogen affinity purified
ポリ/モノ	ポリクローナル
アイソタイプ	IgG

アプリケーション

The Abpromise guarantee **Abpromise保証は、次のテスト済みアプリケーションにおけるab32583の使用に適用されず**

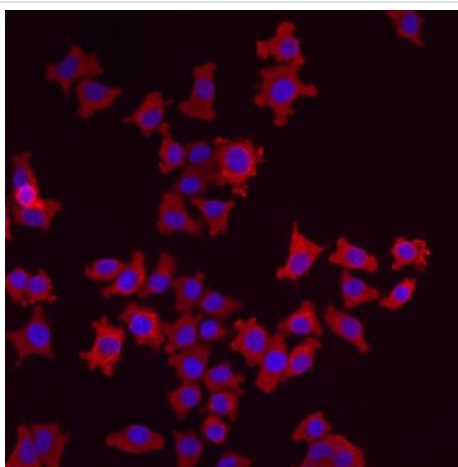
アプリケーションノートには、推奨の開始希釈率がありますが、適切な希釈率につきましてはご検討ください。

アプリケーション	Abreviews	特記事項
ICC/IF		Use at an assay dependent concentration.
WB		1/1000. Detects a band of approximately 57.5 kDa.

ターゲット情報

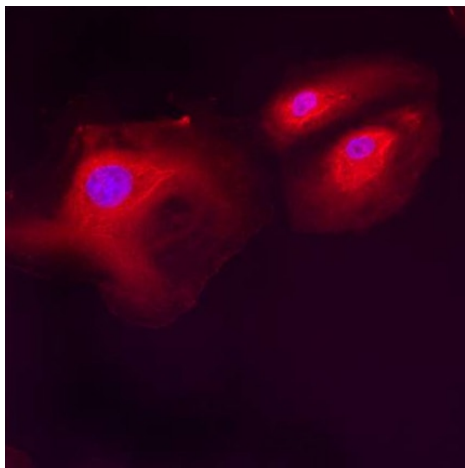
機能	Mannose-specific lectin. May recognize sugar residues of glycoproteins, glycolipids, or glycosylphosphatidyl inositol anchors and may be involved in the sorting or recycling of proteins, lipids, or both. The LMAN1-MCFD2 complex forms a specific cargo receptor for the ER-to-Golgi transport of selected proteins.
組織特異性	Ubiquitous.
関連疾患	Defects in LMAN1 are THE cause of factor V and factor VIII combined deficiency type 1 (F5F8D1) [MIM:227300]; also known as multiple coagulation factor deficiency I (MCFD1). F5F8D1 is an autosomal recessive blood coagulation disorder characterized by bleeding symptoms similar to those in hemophilia or parahemophilia, that are caused by single deficiency of FV or FVIII, respectively. The most common symptoms are epistaxis, menorrhagia, and excessive bleeding during or after trauma. Plasma levels of coagulation factors V and VIII are in the range of 5 to 30% of normal.
配列類似性	Contains 1 L-type lectin-like domain.
翻訳後修飾	The N-terminal may be partly blocked.
細胞内局在	Endoplasmic reticulum-Golgi intermediate compartment membrane. Golgi apparatus membrane. Endoplasmic reticulum membrane.

画像



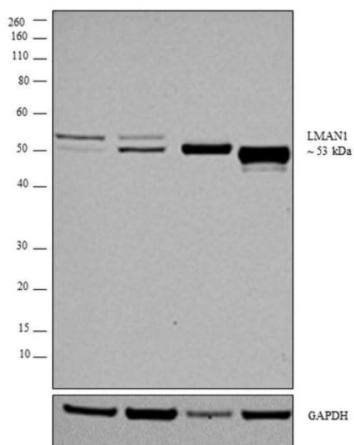
ab32583 labelling LMAN1 in p19 cells by Immunocytochemistry/Immunofluorescence.

Immunocytochemistry/ Immunofluorescence - Anti-LMAN1 antibody (ab32583)



Immunocytochemistry/ Immunofluorescence - Anti-LMAN1 antibody (ab32583)

ab32583 labelling LMAN1 in HMVEC cells by Immunocytochemistry/Immunofluorescence.



Western blot - Anti-LMAN1 antibody (ab32583)

All lanes : Anti-LMAN1 antibody (ab32583) at 1/2000 dilution

Lane 1 : HepG2 lysate

Lane 2 : HeLa lysate

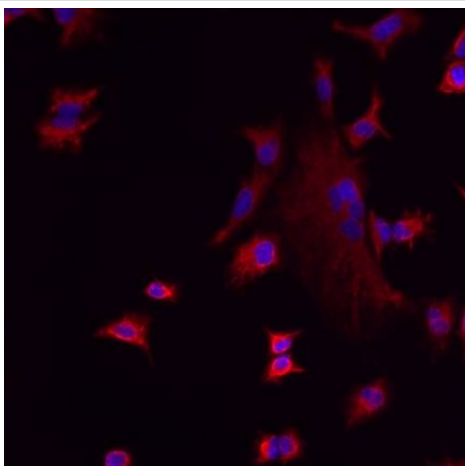
Lane 3 : PANC-1 lysate

Lane 4 : MCF7 lysate

Lysates/proteins at 30 µg per lane.

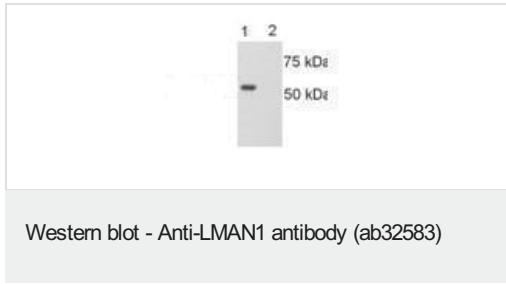
Secondary

All lanes : Goat anti-Rabbit IgG (H+L) Superclonal™ Secondary Antibody, HRP conjugate at 1/4000 dilution



Immunocytochemistry/ Immunofluorescence - Anti-LMAN1 antibody (ab32583)

ab32583 labelling LMAN1 in A549 cells by Immunocytochemistry/Immunofluorescence.



All lanes : Anti-LMAN1 antibody (ab32583) at 1/1000 dilution

Lane 1 : Rat brain lysate

Lane 2 : Rat brain lysate with Immunising peptide

Observed band size: 57.5 kDa

Please note: All products are "FOR RESEARCH USE ONLY. NOT FOR USE IN DIAGNOSTIC PROCEDURES"

Our Abpromise to you: Quality guaranteed and expert technical support

- Replacement or refund for products not performing as stated on the datasheet
- Valid for 12 months from date of delivery
- Response to your inquiry within 24 hours
- We provide support in Chinese, English, French, German, Japanese and Spanish
- Extensive multi-media technical resources to help you
- We investigate all quality concerns to ensure our products perform to the highest standards

If the product does not perform as described on this datasheet, we will offer a refund or replacement. For full details of the Abpromise, please visit <https://www.abcam.co.jp/abpromise> or contact our technical team.

Terms and conditions

- Guarantee only valid for products bought direct from Abcam or one of our authorized distributors