

Anti-LKB1 antibody [Ley 37D/G6] ab15095

KO 評価済

★★★★☆ 12 Abreviews 37 References 画像数 2

製品の概要

製品名	Anti-LKB1 antibody [Ley 37D/G6]
製品の詳細	Mouse monoclonal [Ley 37D/G6] to LKB1
由来種	Mouse
特異性	This antibody detects a single clean band representing LKB1/STK11 in Western blots on cells expressing LKB1.
アプリケーション	適用あり: WB
種交差性	交差種: Mouse, Human
免疫原	Recombinant full length protein corresponding to Human LKB1. Database link: Q15831
ポジティブ・コントロール	HAP1 and MEF cell lysates.
特記事項	<p>The Life Science industry has been in the grips of a reproducibility crisis for a number of years. Abcam is leading the way in addressing this with our range of recombinant monoclonal antibodies and knockout edited cell lines for gold-standard validation. Please check that this product meets your needs before purchasing.</p> <p>If you have any questions, special requirements or concerns, please send us an inquiry and/or contact our Support team ahead of purchase. Recommended alternatives for this product can be found below, along with publications, customer reviews and Q&As</p>

製品の特性

製品の状態	Liquid
保存方法	Shipped at 4°C. Store at +4°C. Do Not Freeze.
バッファー	pH: 7.4 Preservative: 0.02% Sodium azide Constituents: 1% BSA, PBS
ポリ/モノ	モノクローナル
クローン名	Ley 37D/G6
アイソタイプ	IgG2b

アプリケーション

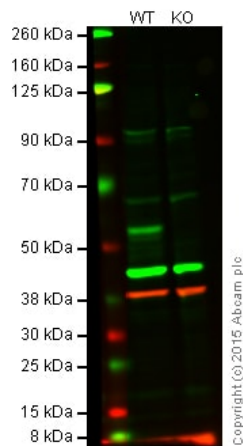
The Abpromise guarantee **Abpromise保証は、次のテスト済みアプリケーションにおけるab15095の使用に適用されます**
アプリケーションノートには、推奨の開始希釈率がありますが、適切な希釈率につきましてはご検討ください。

アプリケーション	Abreviews	特記事項
WB	★★★★★ (6)	1/100 - 1/1000. Detects a band of approximately 50 kDa (predicted molecular weight: 48.6 kDa).

ターゲット情報

機能	Essential role in G1 cell cycle arrest. Phosphorylates and activates members of the AMPK-related subfamily of protein kinases. Tumor suppressor.
組織特異性	Ubiquitously expressed. Strongest expression in testis and fetal liver.
関連疾患	<p>Defects in STK11 are a cause of Peutz-Jeghers syndrome (PJS) [MIM:175200]. PJS is a rare hereditary disease in which there is predisposition to benign and malignant tumors of many organ systems. PJS is an autosomal dominant disorder characterized by melanocytic macules of the lips, multiple gastrointestinal hamartomatous polyps and an increased risk for various neoplasms, including gastrointestinal cancer.</p> <p>Defects in STK11 have been associated with testicular tumors (TEST) [MIM:273300]. A common solid malignancy in males. Germ cell tumors of the testis constitute 95% of all testicular neoplasms.</p>
配列類似性	Belongs to the protein kinase superfamily. CAMK Ser/Thr protein kinase family. LKB1 subfamily. Contains 1 protein kinase domain.
翻訳後修飾	Phosphorylated by a cAMP-dependent protein kinase.
細胞内局在	Nucleus. Cytoplasm. Relocates to the cytoplasm when bound to CAB39 and STRAD or CAB39 and ALS2CR2.

画像



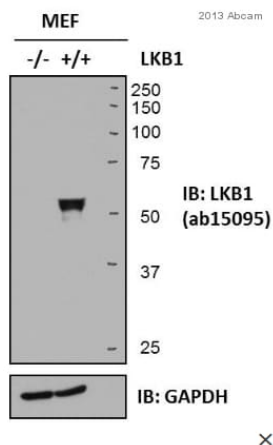
Western blot - Anti-LKB1 antibody [Ley 37D/G6] (ab15095)

Lane 1: Wild-type HAP1 cell lysate (20 µg)

Lane 2: LKB1 knockout HAP1 cell lysate (20 µg)

Lanes 1 and 2: Merged signal (red and green). Green - ab15095 observed at 50 kDa. Red - loading control, **ab181602**, observed at 37 kDa.

ab15095 was shown to recognize LKB1 when LKB1 knockout samples were used, along with additional cross-reactive bands. Wild-type and LKB1 knockout samples were subjected to SDS-PAGE. ab15095 and **ab181602** (loading control to LKB1) were diluted 1/100 and 1/10 000 and incubated overnight at 4°C. Blots were developed with Goat anti-Mouse IgG H&L (IRDye® 800CW) preadsorbed (**ab216772**) and Goat Anti-Rabbit IgG H&L (IRDye® 680RD) preadsorbed (**ab216777**) secondary antibodies at 1/10 000 dilution for 1 h at room temperature before imaging.



Western blot - Anti-LKB1 antibody [Ley 37D/G6] (ab15095)

Image courtesy of anonymous abreviewer

All lanes : Anti-LKB1 antibody [Ley 37D/G6] (ab15095) at 1/1000 dilution

All lanes :

Secondary

All lanes : Polyclonal goat anti-mouse conjugated with horse radish peroxidase.

Predicted band size: 48.6 kDa

Observed band size: 55 kDa

Negative control (Lane 1): LKB1 knockout MEF cells.

Positive control (Lane 2): wildtype MEF cells.

Blocking step: 5% milk as blocking agent for 1 hour at 25 °C.

Incubation: 16 hours at 4 °C, using 5% milk in TBS/0.1 Tween as diluent.

Please note: All products are "FOR RESEARCH USE ONLY. NOT FOR USE IN DIAGNOSTIC PROCEDURES"

Our Abpromise to you: Quality guaranteed and expert technical support

- Replacement or refund for products not performing as stated on the datasheet
- Valid for 12 months from date of delivery

- Response to your inquiry within 24 hours
- We provide support in Chinese, English, French, German, Japanese and Spanish
- Extensive multi-media technical resources to help you
- We investigate all quality concerns to ensure our products perform to the highest standards

If the product does not perform as described on this datasheet, we will offer a refund or replacement. For full details of the Abpromise, please visit <https://www.abcam.co.jp/abpromise> or contact our technical team.

Terms and conditions

- Guarantee only valid for products bought direct from Abcam or one of our authorized distributors