

Anti-Livin antibody ab97350

9 References [画像数 3](#)

医薬用外劇物

製品の概要

製品名	Anti-Livin antibody
製品の詳細	Rabbit polyclonal to Livin
由来種	Rabbit
アプリケーション	適用あり: WB, IHC-P, ICC/IF
種交差性	交差種: Human
免疫原	Recombinant fragment, corresponding to a region within amino acids 1-211 of Human Livin (AAH14475).
ポジティブ・コントロール	WB: A431, H1299, HeLa and HepG2 whole cell lysate (ab7900) IHC-P: Cal27 xenograft ICc/IF: HeLa cell
特記事項	<p>The Life Science industry has been in the grips of a reproducibility crisis for a number of years. Abcam is leading the way in addressing this with our range of recombinant monoclonal antibodies and knockout edited cell lines for gold-standard validation. Please check that this product meets your needs before purchasing.</p> <p>If you have any questions, special requirements or concerns, please send us an inquiry and/or contact our Support team ahead of purchase. Recommended alternatives for this product can be found below, along with publications, customer reviews and Q&As</p>

製品の特性

製品の状態	Liquid
保存方法	Shipped at 4°C. Upon delivery aliquot. Store at -20°C or -80°C. Avoid freeze / thaw cycle.
バッファー	pH: 7.00 Preservative: 0.01% Thimerosal (merthiolate) Constituents: 1.21% Tris, 0.75% Glycine, 20% Glycerol (glycerin, glycerine)
精製度	Immunogen affinity purified
ポリ/モノ	ポリクローナル
アイソタイプ	IgG

アプリケーション

The Abpromise guarantee

Abpromise保証は、次のテスト済みアプリケーションにおけるab97350の使用に適用されます

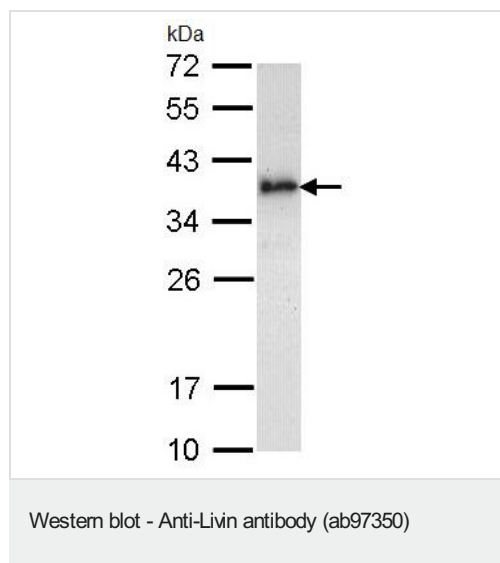
アプリケーションノートには、推奨の開始希釈率がありますが、適切な希釈率につきましてはご確認ください。

アプリケーション	Abreviews	特記事項
WB		1/500 - 1/3000. Predicted molecular weight: 33 kDa.
IHC-P		1/100 - 1/500.
ICC/IF		1/100 - 1/200.

ターゲット情報

機能	Protects against apoptosis induced by TNF or by chemical agents such as adriamycin, etoposide or staurosporine. Suppression of apoptosis is mediated by activation of MAPK8/JNK1, and possibly also of MAPK9/JNK2. This activation depends on TAB1 and NR2C2/TAK1. In vitro, inhibits caspase-3 and proteolytic activation of pro-caspase-9. Isoform 1 blocks staurosporine-induced apoptosis. Isoform 2 blocks etoposide-induced apoptosis.
組織特異性	Isoform 1 and isoform 2 are expressed at very low levels or not detectable in most adult tissues. Detected in adult heart, placenta, lung, lymph node, spleen and ovary, and in several carcinoma cell lines. Isoform 2 is detected in fetal kidney, heart and spleen, and at lower levels in adult brain, skeletal muscle and peripheral blood leukocytes.
配列類似性	Belongs to the IAP family. Contains 1 BIR repeat. Contains 1 RING-type zinc finger.
細胞内局在	Nucleus. Cytoplasm. Nuclear, and in a filamentous pattern throughout the cytoplasm.

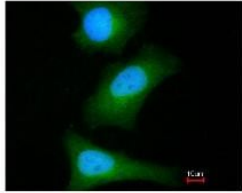
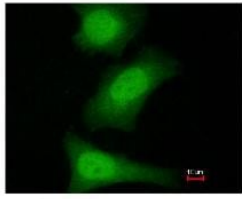
画像



Anti-Livin antibody (ab97350) at 1/1000 dilution + A431 whole cell lysate at 30 µg

Predicted band size: 33 kDa

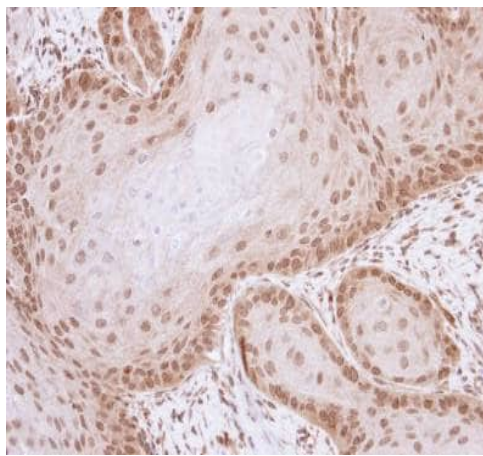
12% SDS PAGE



Immunocytochemistry/ Immunofluorescence - Anti-Livin antibody (ab97350)

ab97350, at a 1/200 dilution, staining Livin in paraformaldehyde fixed HeLa cell by immunofluorescence.

The lower image shows ab97350 merged with DNA probe.



Immunohistochemistry (Formalin/PFA-fixed paraffin-embedded sections) - Anti-Livin antibody (ab97350)

ab97350, at a 1/100 dilution, staining Livin in paraffin embedded Cal27 xenograft by Immunohistochemistry.

Please note: All products are "FOR RESEARCH USE ONLY. NOT FOR USE IN DIAGNOSTIC PROCEDURES"

Our Abpromise to you: Quality guaranteed and expert technical support

- Replacement or refund for products not performing as stated on the datasheet
- Valid for 12 months from date of delivery
- Response to your inquiry within 24 hours
- We provide support in Chinese, English, French, German, Japanese and Spanish
- Extensive multi-media technical resources to help you
- We investigate all quality concerns to ensure our products perform to the highest standards

If the product does not perform as described on this datasheet, we will offer a refund or replacement. For full details of the Abpromise,

please visit <https://www.abcam.co.jp/abpromise> or contact our technical team.

Terms and conditions

- Guarantee only valid for products bought direct from Abcam or one of our authorized distributors