


Anti-Liver Carboxylesterase 1/CES1 antibody ab45957

10 References **画像数 3**

製品の概要

| | |
|----------|---|
| 製品名 | Anti-Liver Carboxylesterase 1/CES1 antibody |
| 製品の詳細 | Rabbit polyclonal to Liver Carboxylesterase 1/CES1 |
| 由来種 | Rabbit |
| 特異性 | From Jan 2024, QC testing of replenishment batches of this polyclonal changed. All tested and expected application and reactive species combinations are still covered by our Abcam product promise. However, we no longer test all applications. For more information on a specific batch, please contact our Scientific Support who will be happy to help. |
| アプリケーション | 適用あり: IHC-P, WB, ICC/IF |
| 種交差性 | 交差種: Rat, Human 交差が予測される動物種: Mouse, Baboon, Rhesus monkey  |
| 免疫原 | Synthetic peptide. This information is proprietary to Abcam and/or its suppliers. |
| 特記事項 | <p>The Life Science industry has been in the grips of a reproducibility crisis for a number of years. Abcam is leading the way in addressing this with our range of recombinant monoclonal antibodies and knockout edited cell lines for gold-standard validation. Please check that this product meets your needs before purchasing.</p> <p>If you have any questions, special requirements or concerns, please send us an inquiry and/or contact our Support team ahead of purchase. Recommended alternatives for this product can be found below, along with publications, customer reviews and Q&As</p> |

製品の特性

| | |
|-------|--|
| 製品の状態 | Liquid |
| 保存方法 | Shipped at 4°C. Store at +4°C short term (1-2 weeks). Upon delivery aliquot. Store at -20°C or -80°C. Avoid freeze / thaw cycle. |
| バッファー | pH: 7.40 Preservative: 0.02% Sodium azide Constituent: PBS Batches of this product that have a concentration < 1mg/ml may have BSA added as a stabilising agent. If you would like information about the formulation of a specific lot, please contact our scientific support team who will be happy to help. |

| | |
|--------|-----------------------------|
| 精製度 | Immunogen affinity purified |
| ポリ/モノ | ポリクローナル |
| アイソタイプ | IgG |

アプリケーション

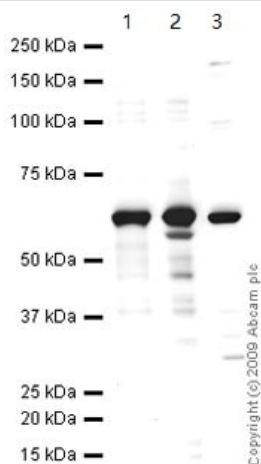
The Abpromise guarantee **Abpromise保証は、次のテスト済みアプリケーションにおけるab45957の使用に適用されます**
 アプリケーションノートには、推奨の開始希釈率がありますが、適切な希釈率につきましてはご検討ください。

| アプリケーション | Abreviews | 特記事項 |
|----------|-----------|--|
| IHC-P | | Use a concentration of 1 µg/ml. |
| WB | | Use a concentration of 1 µg/ml. Detects a band of approximately 63 kDa (predicted molecular weight: 63 kDa). |
| ICC/IF | | Use a concentration of 1 µg/ml. |

ターゲット情報

| | |
|-------|---|
| 機能 | Involves in the detoxification of xenobiotics and in the activation of ester and amide prodrugs. Hydrolyzes aromatic and aliphatic esters, but has no catalytic activity toward amides or a fatty acyl-CoA ester. Hydrolyzes the methyl ester group of cocaine to form benzoylecgonine. Catalyzes the transesterification of cocaine to form cocaethylene. Displays fatty acid ethyl ester synthase activity, catalyzing the ethyl esterification of oleic acid to ethyloleate. |
| 組織特異性 | Expressed predominantly in liver with lower levels in heart and lung. |
| 配列類似性 | Belongs to the type-B carboxylesterase/lipase family. |
| 翻訳後修飾 | Contains sialic acid. Cleavage of the signal sequence can occur at 2 positions, either between Trp-17 and Gly-18 or between Gly-18 and His-19. |
| 細胞内局在 | Endoplasmic reticulum lumen. |

画像



Western blot - Anti-Liver Carboxylesterase 1/CES1 antibody (ab45957)

All lanes : Anti-Liver Carboxylesterase 1/CES1 antibody (ab45957) at 1 µg/ml

Lane 1 : HepG2 (Human hepatocellular liver carcinoma cell line)
Whole cell lysate

Lane 2 : THP-1 whole cell lysate ([ab7913](#))

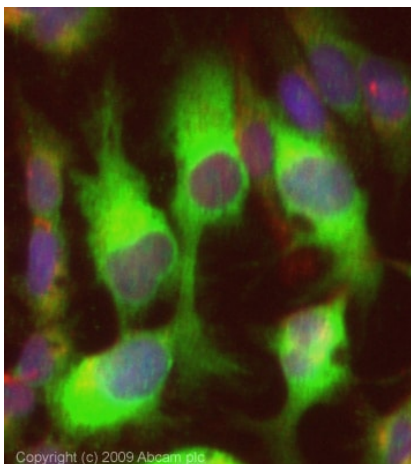
Lane 3 : Liver (Rat) Tissue Lysate - normal tissue

Lysates/proteins at 10 µg per lane.

Secondary

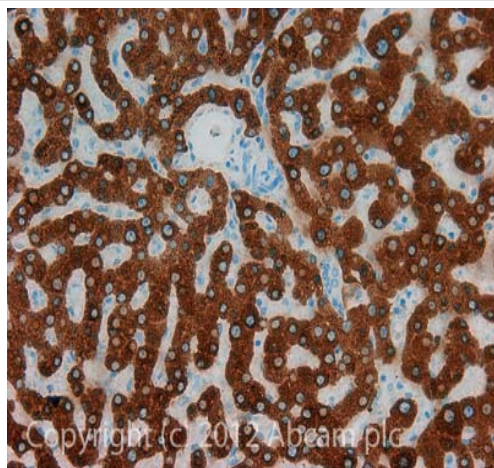
All lanes : Goat polyclonal to Rabbit IgG - H&L - Pre-Adsorbed (HRP) at 1/3000 dilution

Predicted band size: 63 kDa



Immunocytochemistry/ Immunofluorescence - Anti-Liver Carboxylesterase 1/CES1 antibody (ab45957)

ICC/IF image of ab45957 stained HepG2 cells. The cells were 4% PFA fixed (10 min) and then incubated in 1%BSA / 10% normal Goat serum / 0.3M glycine in 0.1% PBS-Tween for 1h to permeabilise the cells and block non-specific protein-protein interactions. The cells were then incubated with the antibody (ab45957, 1µg/ml) overnight at +4°C. The secondary antibody (green) was Alexa Fluor® 488 Goat anti-Rabbit IgG (H+L) used at a 1/1000 dilution for 1h. Alexa Fluor® 594 WGA was used to label plasma membranes (red) at a 1/200 dilution for 1h. DAPI was used to stain the cell nuclei (blue). This antibody also gave a positive result in 100% Methanol fixed (5 min) HepG2 cells at 1µg/ml.



Immunohistochemistry (Formalin/PFA-fixed paraffin-embedded sections) - Anti-Liver Carboxylesterase 1/CES1 antibody (ab45957)

IHC image of Carboxylesterase 1 staining in Human normal liver formalin fixed paraffin embedded tissue section, performed on a Leica Bond™ system using the standard protocol F. The section was pre-treated using heat mediated antigen retrieval with sodium citrate buffer (pH6, epitope retrieval solution 1) for 20 mins. The section was then incubated with ab45957, 1µg/ml, for 15 mins at room temperature and detected using an HRP conjugated compact polymer system. DAB was used as the chromogen. The section was then counterstained with haematoxylin and mounted with DPX.

For other IHC staining systems (automated and non-automated) customers should optimize variable parameters such as antigen retrieval conditions, primary antibody concentration and antibody incubation times.

Please note: All products are "FOR RESEARCH USE ONLY. NOT FOR USE IN DIAGNOSTIC PROCEDURES"

Our Abpromise to you: Quality guaranteed and expert technical support

- Replacement or refund for products not performing as stated on the datasheet
- Valid for 12 months from date of delivery
- Response to your inquiry within 24 hours
- We provide support in Chinese, English, French, German, Japanese and Spanish
- Extensive multi-media technical resources to help you
- We investigate all quality concerns to ensure our products perform to the highest standards

If the product does not perform as described on this datasheet, we will offer a refund or replacement. For full details of the Abpromise, please visit <https://www.abcam.co.jp/abpromise> or contact our technical team.

Terms and conditions

- Guarantee only valid for products bought direct from Abcam or one of our authorized distributors