


Anti-Liver Arginase antibody ab92274

★★★★☆ [2 Abreviews](#) [3 References](#) [画像数 2](#)

製品の概要

製品名	Anti-Liver Arginase antibody
製品の詳細	Goat polyclonal to Liver Arginase
由来種	Goat
アプリケーション	適用あり: WB
種交差性	交差種: Mouse, Rat, Human, Pig 交差が予測される動物種: Rabbit, Cow, Dog 
免疫原	Synthetic peptide: CFGLAREGNHKPID , corresponding to C terminal amino acids 303-316 of Human liver Arginase (NP_000036.2). Run BLAST with Run BLAST with
ポジティブ・コントロール	WB: Pig, mouse, human and rat liver lysate.
特記事項	<p>The Life Science industry has been in the grips of a reproducibility crisis for a number of years. Abcam is leading the way in addressing this with our range of recombinant monoclonal antibodies and knockout edited cell lines for gold-standard validation. Please check that this product meets your needs before purchasing.</p> <p>If you have any questions, special requirements or concerns, please send us an inquiry and/or contact our Support team ahead of purchase. Recommended alternatives for this product can be found below, along with publications, customer reviews and Q&As</p>

製品の特性

製品の状態	Liquid
保存方法	Shipped at 4°C. Upon delivery aliquot and store at -20°C. Avoid repeated freeze / thaw cycles.
バッファー	pH: 7.30 Preservative: 0.02% Sodium azide Constituents: 0.5% Tris buffered saline, 0.5% BSA
精製度	Immunogen affinity purified
特記事項 (精製)	Purified from goat serum by ammonium sulphate precipitation followed by antigen affinity chromatography using the immunizing peptide.
ポリ/モノ	ポリクローナル

アプリケーション

The Abpromise guarantee **Abpromise保証は、次のテスト済みアプリケーションにおけるab92274の使用に適用されます**
 アプリケーションノートには、推奨の開始希釈率がありますが、適切な希釈率につきましてはご検討ください。

アプリケーション	Abreviews	特記事項
WB	★★★★★ (1)	Use a concentration of 0.01 - 0.03 µg/ml. Detects a band of approximately 37 kDa (predicted molecular weight: 35 kDa). 1 hour primary incubation is recommended for this product.

ターゲット情報

パスウェイ

Nitrogen metabolism; urea cycle; L-ornithine and urea from L-arginine: step 1/1.

関連疾患

Defects in ARG1 are the cause of argininemia (ARGIN) [MIM:207800]; also known as hyperargininemia. Argininemia is a rare autosomal recessive disorder of the urea cycle. Arginine is elevated in the blood and cerebrospinal fluid, and periodic hyperammonemia occurs. Clinical manifestations include developmental delay, seizures, mental retardation, hypotonia, ataxia, progressive spastic quadriplegia.

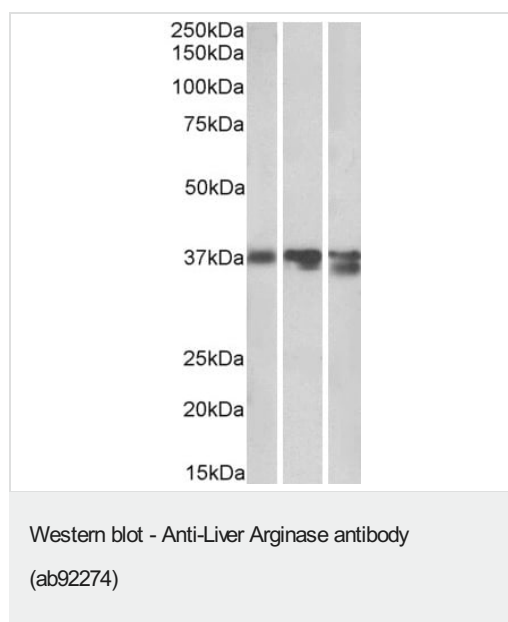
配列類似性

Belongs to the arginase family.

細胞内局在

Cytoplasm.

画像



All lanes : Anti-Liver Arginase antibody (ab92274) at 0.03 µg/ml

Lane 1 : pig liver tissue lysate

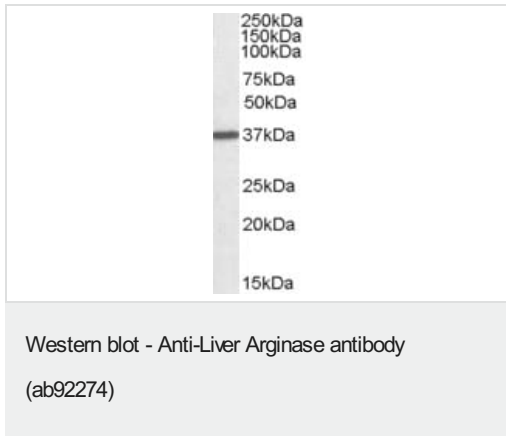
Lane 2 : mouse liver tissue lysate

Lane 3 : rat liver tissue lysate

Lysates/proteins at 35 µg per lane.

Predicted band size: 35 kDa

Observed band size: 35 kDa



Anti-Liver Arginase antibody (ab92274) at 0.01 µg/ml + human liver lysate in RIPA buffer at 35 µg

Predicted band size: 35 kDa

Please note: All products are "FOR RESEARCH USE ONLY. NOT FOR USE IN DIAGNOSTIC PROCEDURES"

Our Abpromise to you: Quality guaranteed and expert technical support

- Replacement or refund for products not performing as stated on the datasheet
- Valid for 12 months from date of delivery
- Response to your inquiry within 24 hours
- We provide support in Chinese, English, French, German, Japanese and Spanish
- Extensive multi-media technical resources to help you
- We investigate all quality concerns to ensure our products perform to the highest standards

If the product does not perform as described on this datasheet, we will offer a refund or replacement. For full details of the Abpromise, please visit <https://www.abcam.co.jp/abpromise> or contact our technical team.

Terms and conditions

- Guarantee only valid for products bought direct from Abcam or one of our authorized distributors