

Anti-Lipoprotein lipase antibody [5D2] ab93898

KO 評価済

★★★★☆ 2 Abreviews 5 References 画像数 3

製品の概要

製品名	Anti-Lipoprotein lipase antibody [5D2]
製品の詳細	Mouse monoclonal [5D2] to Lipoprotein lipase
由来種	Mouse
特異性	This antibody does not recognise hepatic lipase.
アプリケーション	適用あり: ICC/IF, Flow Cyt
種交差性	交差種: Mouse, Cat, Human
免疫原	Full length native protein (purified) corresponding to Cow Lipoprotein lipase. Purified bovine milk lipoprotein lipase protein. Database link: <u>P11151</u>
ポジティブ・コントロール	ICC/IF: HeLa cells and mouse cortical glia. Flow Cyt: HeLa cells.
特記事項	<p>The Life Science industry has been in the grips of a reproducibility crisis for a number of years. Abcam is leading the way in addressing this with our range of recombinant monoclonal antibodies and knockout edited cell lines for gold-standard validation. Please check that this product meets your needs before purchasing.</p> <p>If you have any questions, special requirements or concerns, please send us an inquiry and/or contact our Support team ahead of purchase. Recommended alternatives for this product can be found below, along with publications, customer reviews and Q&As</p>

製品の特性

製品の状態	Liquid
保存方法	Shipped at 4°C. Upon delivery aliquot and store at -20°C. Avoid repeated freeze / thaw cycles.
バッファー	Preservative: 0.1% Sodium azide Constituent: PBS
精製度	Protein G purified
ポリ/モノ	モノクローナル
クローン名	5D2
アイソタイプ	IgG1

アプリケーション

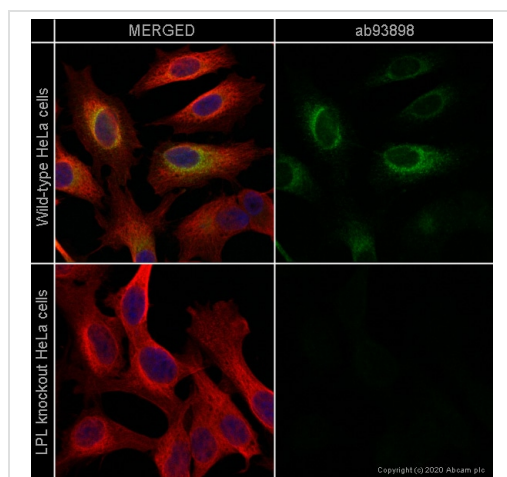
The Abpromise guarantee **Abpromise保証は、次のテスト済みアプリケーションにおけるab93898の使用に適用されます**
アプリケーションノートには、推奨の開始希釈率がありますが、適切な希釈率につきましてはご検討ください。

アプリケーション	Abreviews	特記事項
ICC/IF		Use a concentration of 2 - 5 µg/ml.
Flow Cyt		Use 1µg for 10 ⁶ cells. ab170190 - Mouse monoclonal IgG1, is suitable for use as an isotype control with this antibody.

ターゲット情報

機能	The primary function of this lipase is the hydrolysis of triglycerides of circulating chylomicrons and very low density lipoproteins (VLDL). Binding to heparin sulfate proteoglycans at the cell surface is vital to the function. The apolipoprotein, APOC2, acts as a coactivator of LPL activity in the presence of lipids on the luminal surface of vascular endothelium.
関連疾患	Defects in LPL are the cause of lipoprotein lipase deficiency (LPL deficiency) [MIM:238600]; also known as familial chylomicronemia or hyperlipoproteinemia type I. LPL deficiency chylomicronemia is a recessive disorder usually manifesting in childhood. On a normal diet, patients often present with abdominal pain, hepatosplenomegaly, lipemia retinalis, eruptive xanthomata, and massive hypertriglyceridemia, sometimes complicated with acute pancreatitis.
配列類似性	Belongs to the AB hydrolase superfamily. Lipase family. Contains 1 PLAT domain.
翻訳後修飾	Tyrosine nitration after lipopolysaccharide (LPS) challenge down-regulates the lipase activity.
細胞内局在	Cell membrane. Secreted. Locates to the plasma membrane of microvilli of hepatocytes with triacyl-glycerol-rich lipoproteins (TRL). Some of the bound LPL is then internalized and located inside non-coated endocytic vesicles.

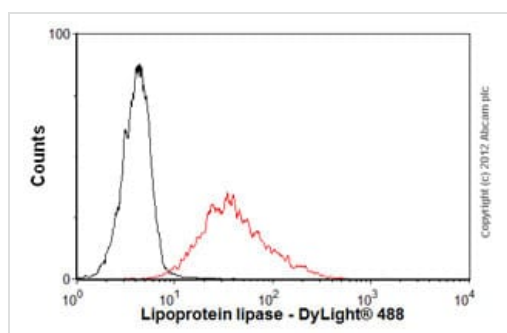
画像



Immunocytochemistry/ Immunofluorescence - Anti-Lipoprotein lipase antibody [5D2] (ab93898)

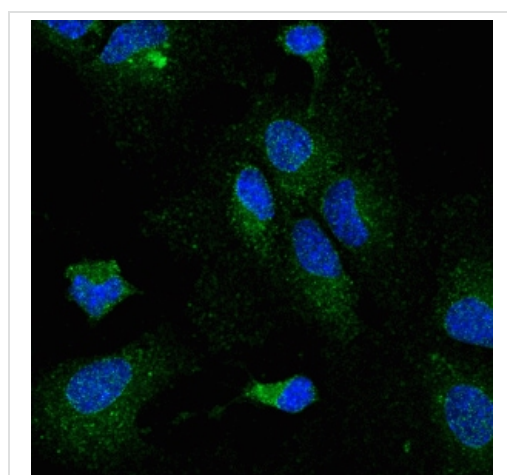
ab93898 staining Lipoprotein lipase in wild-type HeLa cells (top panel) and LPL knockout HeLa cells (bottom panel). The cells were fixed with 4% paraformaldehyde (10 min) then permeabilized with 0.1% Triton X-100 for 5 minutes and then blocked with 1% BSA/10% normal goat serum/0.3M glycine in 0.1% PBS-Tween for 1h. The cells were then incubated with ab93898 at 5µg/ml concentration and **ab6046** (Rabbit polyclonal to beta Tubulin) at 1/1000 dilution overnight at 4°C followed by a further incubation at room temperature for 1h with a goat secondary antibody to mouse IgG (Alexa Fluor® 488) (**ab150117**) at 2 µg/ml (shown in green) and a goat secondary antibody to rabbit IgG (Alexa Fluor® 594) (**ab150080**) at 2 µg/ml (shown in red). Nuclear DNA was labelled in blue with DAPI.

Image was taken with a confocal microscope (Leica-Microsystems TCS SP8).



Flow Cytometry - Anti-Lipoprotein lipase antibody [5D2] (ab93898)

Overlay histogram showing HeLa cells stained with ab93898 (red line). The cells were fixed with 80% methanol (5 min) and then permeabilized with 0.1% PBS-Tween for 20 min. The cells were then incubated in 1x PBS / 10% normal goat serum / 0.3M glycine to block non-specific protein-protein interactions followed by the antibody (ab93898, 1µg/1x10⁶ cells) for 30 min at 22°C. The secondary antibody used was DyLight® 488 goat anti-mouse IgG (H+L) (**ab96879**) at 1/500 dilution for 30 min at 22°C. Isotype control antibody (black line) was mouse IgG1 [ICIGG1] (**ab91353**, 2µg/1x10⁶ cells) used under the same conditions. Acquisition of >5,000 events was performed.



Immunocytochemistry/ Immunofluorescence - Anti-Lipoprotein lipase antibody [5D2] (ab93898)

Immunocytochemistry/Immunofluorescence analysis of mouse cortical glia labelling Lipoprotein lipase (green) with ab93898 at 2µg/ml. Cells were permeabilized with PBS + 0.1% Triton X-100 and blocked with PBS + 10% FBS. Nuclei stained with Hoechst (blue).

Please note: All products are "FOR RESEARCH USE ONLY. NOT FOR USE IN DIAGNOSTIC PROCEDURES"

Our Abpromise to you: Quality guaranteed and expert technical support

- Replacement or refund for products not performing as stated on the datasheet
- Valid for 12 months from date of delivery
- Response to your inquiry within 24 hours

- We provide support in Chinese, English, French, German, Japanese and Spanish
- Extensive multi-media technical resources to help you
- We investigate all quality concerns to ensure our products perform to the highest standards

If the product does not perform as described on this datasheet, we will offer a refund or replacement. For full details of the Abpromise, please visit <https://www.abcam.co.jp/abpromise> or contact our technical team.

Terms and conditions

- Guarantee only valid for products bought direct from Abcam or one of our authorized distributors