

Anti-Lipocalin-2 / NGAL antibody [5G5] ab23477

KO 評価済

★★★★☆ 3 Abreviews 16 References 画像数 5

製品の概要

製品名	Anti-Lipocalin-2 / NGAL antibody [5G5]
製品の詳細	Mouse monoclonal [5G5] to Lipocalin-2 / NGAL
由来種	Mouse
特異性	ab23477 is specific for Lipocalin-2 / NGAL, native and denatured forms.
アプリケーション	適用あり: WB, IHC-FoFr, IHC-P
種交差性	交差種: Human
免疫原	Full length native protein (purified) corresponding to Human Lipocalin-2/ NGAL. Full length native human neutrophil gelatinase associated lipocalin isolated from neutrophils.
ポジティブ・コントロール	WB: SW480 cell lysate. IHC-P: PaCa, chronic pancreatitis and normal pancreas tissue sections.
特記事項	<p>The Life Science industry has been in the grips of a reproducibility crisis for a number of years. Abcam is leading the way in addressing this with our range of recombinant monoclonal antibodies and knockout edited cell lines for gold-standard validation. Please check that this product meets your needs before purchasing.</p> <p>If you have any questions, special requirements or concerns, please send us an inquiry and/or contact our Support team ahead of purchase. Recommended alternatives for this product can be found below, along with publications, customer reviews and Q&As</p>

製品の特性

製品の状態	Liquid
保存方法	Shipped at 4°C. Store at +4°C short term (1-2 weeks). Store at 4°C or -20°C. Avoid freeze / thaw cycle.
バッファー	<p>pH: 7.40</p> <p>Preservative: 0.097% Sodium azide</p> <p>Constituents: 0.0268% PBS, 2.9% Sodium chloride</p>
精製度	Protein G purified
ポリ/モノ	モノクローナル
クローン名	5G5
ミエローマ	x63-Ag8.653

アイソタイプ	IgG1
軽鎖の種類	kappa

アプリケーション

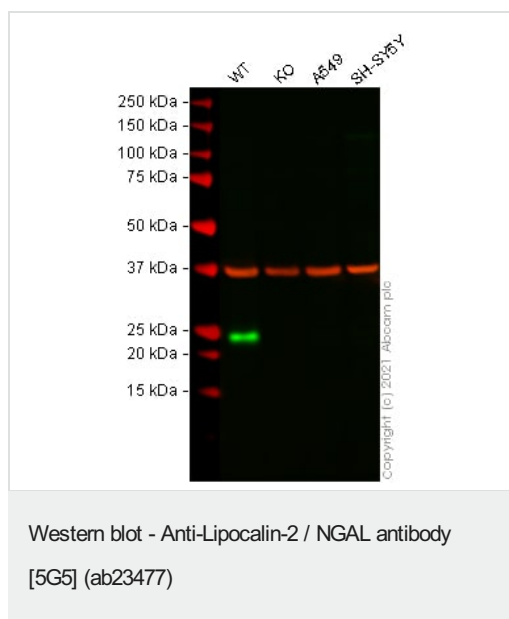
The Abpromise guarantee **Abpromise保証は、**次のテスト済みアプリケーションにおけるab23477の使用に適用されます
アプリケーションノートには、推奨の開始希釈率がありますが、適切な希釈率につきましてはご確認ください。

アプリケーション	Abreviews	特記事項
WB	★★★★★ (2)	1/1000. Predicted molecular weight: 22 kDa.
IHC-FoFr		Use at an assay dependent concentration.
IHC-P	★★★★★ (1)	Use at an assay dependent concentration.

ターゲット情報

機能	Iron-trafficking protein involved in multiple processes such as apoptosis, innate immunity and renal development. Binds iron through association with 2,5-dihydroxybenzoic acid (2,5-DHBA), a siderophore that shares structural similarities with bacterial enterobactin, and delivers or removes iron from the cell, depending on the context. Iron-bound form (holo-24p3) is internalized following binding to the SLC22A17 (24p3R) receptor, leading to release of iron and subsequent increase of intracellular iron concentration. In contrast, association of the iron-free form (apo-24p3) with the SLC22A17 (24p3R) receptor is followed by association with an intracellular siderophore, iron chelation and iron transfer to the extracellular medium, thereby reducing intracellular iron concentration. Involved in apoptosis due to interleukin-3 (IL3) deprivation: iron-loaded form increases intracellular iron concentration without promoting apoptosis, while iron-free form decreases intracellular iron levels, inducing expression of the proapoptotic protein BCL2L11/BIM, resulting in apoptosis. Involved in innate immunity, possibly by sequestering iron, leading to limit bacterial growth.
組織特異性	Expressed in bone marrow and in tissues that are prone to exposure to microorganism. High expression is found in bone marrow as well as in uterus, prostate, salivary gland, stomach, appendix, colon, trachea and lung. Not found in the small intestine or peripheral blood leukocytes.
配列類似性	Belongs to the calycin superfamily. Lipocalin family.
細胞内局在	Secreted. Upon binding to the SLC22A17 (24p3R) receptor, it is internalized.

画像



All lanes : Anti-Lipocalin-2 / NGAL antibody [5G5] (ab23477) at 1/1000 dilution

Lane 1 : Wild-type SW480 (Human colorectal adenocarcinoma cell line) whole cell lysate

Lane 2 : LCN2 knockout SW480 (Human colorectal adenocarcinoma cell line) whole cell lysate

Lane 3 : A549 (Human lung carcinoma cell line) whole cell lysate

Lane 4 : SH-SY5Y (Human neuroblastoma cell line from bone marrow) whole cell lysate

Lysates/proteins at 20 µg per lane.

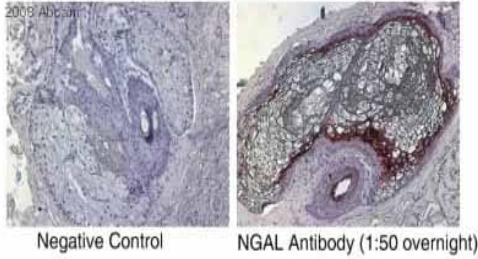
Performed under reducing conditions.

Predicted band size: 22 kDa

Observed band size: 23 kDa

Lanes 1 -4: Merged signal (red and green). Green - ab23477 observed at 23 kDa. Red - loading control **ab181602** (Rabbit Anti-GAPDH antibody [EPR16891]) observed at 37 kDa.

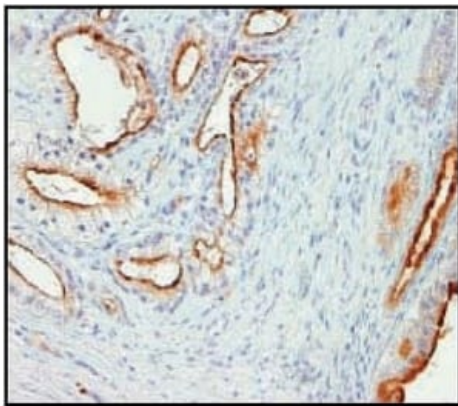
ab23477 was shown to react with Lipocalin-2 / NGAL in wild-type SW480 cells in Western blot with loss of signal observed in LCN2 knockout cell line **ab270486** (knockout cell lysate **ab270509**). Wild-type SW480 and LCN2 knockout cell lysates were subjected to SDS-PAGE. Membranes were blocked in 3 % milk in TBS-T (0.1 % Tween®) before incubation with ab23477 and **ab181602** (Rabbit Anti-GAPDH antibody [EPR16891]) overnight at 4 °C at a 1 in 1000 dilution and a 1 in 20000 dilution respectively. Blots were incubated with Goat anti-Mouse IgG H&L (IRDye® 800CW) preabsorbed (**ab216772**) and Goat anti-Rabbit IgG H&L (IRDye® 680RD) preabsorbed (**ab216777**) secondary antibodies at 1 in 20000 dilution for 1 h at room temperature before imaging.



Immunohistochemistry (Formalin/PFA-fixed paraffin-embedded sections) - Anti-Lipocalin-2 / NGAL antibody [5G5] (ab23477)

This image is courtesy of an anonymous Abreview

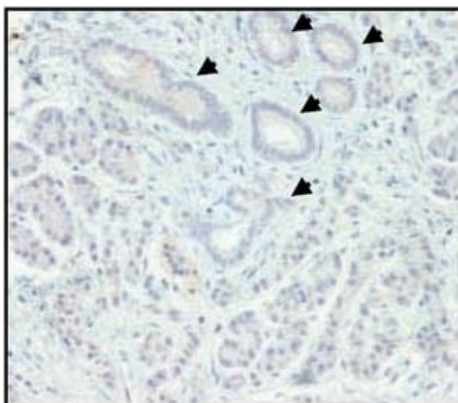
ab23477 staining human skin tissue sections by IHC-P. Sections were fixed in 10% neutral buffered formalin and subjected to heat mediated antigen retrieval prior to blocking with 1% BSA for 1 hour at 25°C. The primary antibody was diluted 1/50 and incubated with the sample for 20 hours at 4°C. A biotinylated horse anti-mouse antibody diluted 1/200 was used as the secondary.



(PaCa)

Immunohistochemistry (Formalin/PFA-fixed paraffin-embedded sections) analysis of human PaCa tissue sections labelling Lipocalin 2 with ab23477.

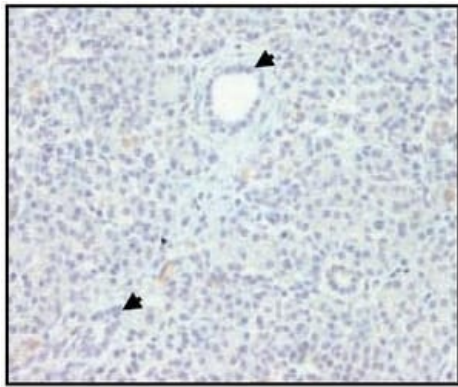
Immunohistochemistry (Formalin/PFA-fixed paraffin-embedded sections) - Anti-Lipocalin-2 / NGAL antibody [5G5] (ab23477)



Chronic pancreatitis (CP)

Immunohistochemistry (Formalin/PFA-fixed paraffin-embedded sections) analysis of human chronic pancreatitis tissue sections labelling Lipocalin-2 / NGAL with ab23477.

Immunohistochemistry (Formalin/PFA-fixed paraffin-embedded sections) - Anti-Lipocalin-2 / NGAL antibody [5G5] (ab23477)



Normal pancreas

Immunohistochemistry (Formalin/PFA-fixed paraffin-embedded sections) - Anti-Lipocalin-2 / NGAL antibody [5G5] (ab23477)

Immunohistochemistry (Formalin/PFA-fixed paraffin-embedded sections) analysis of normal human pancreas tissue sections labelling Lipocalin-2 / NGAL with ab23477.

Please note: All products are "FOR RESEARCH USE ONLY. NOT FOR USE IN DIAGNOSTIC PROCEDURES"

Our Abpromise to you: Quality guaranteed and expert technical support

- Replacement or refund for products not performing as stated on the datasheet
- Valid for 12 months from date of delivery
- Response to your inquiry within 24 hours
- We provide support in Chinese, English, French, German, Japanese and Spanish
- Extensive multi-media technical resources to help you
- We investigate all quality concerns to ensure our products perform to the highest standards

If the product does not perform as described on this datasheet, we will offer a refund or replacement. For full details of the Abpromise, please visit <https://www.abcam.co.jp/abpromise> or contact our technical team.

Terms and conditions

- Guarantee only valid for products bought direct from Abcam or one of our authorized distributors