


### Anti-Lipin 1 antibody ab70138

★★★★☆ [4 Abreviews](#) [6 References](#) [画像数 1](#)

#### 製品の概要

|              |   |
|--------------|---|
| 製品名          | Anti-Lipin 1 antibody   |
| 製品の詳細        | Rabbit polyclonal to Lipin 1  |
| 由来種          | Rabbit  |
| アプリケーション     | <b>適用あり:</b> WB   |
| 種交差性         | <b>交差種:</b> Mouse<br><b>交差が予測される動物種:</b> Rat, Rabbit, Cow, Dog, Human, Pig, Chimpanzee   |
| 免疫原          | Synthetic peptide corresponding to Human Lipin 1 aa 850 to the C-terminus (C terminal) conjugated to keyhole limpet haemocyanin.<br>(Peptide available as <a href="#">ab86631</a> )   |
| ポジティブ・コントロール | This antibody gave a positive signal in the following Mouse Tissue Lysates: Liver; Pancreas, Kidney.  |
| 特記事項         | <p>The Life Science industry has been in the grips of a reproducibility crisis for a number of years. Abcam is leading the way in addressing this with our range of recombinant monoclonal antibodies and knockout edited cell lines for gold-standard validation. Please check that this product meets your needs before purchasing.</p> <p>If you have any questions, special requirements or concerns, please send us an inquiry and/or contact our Support team ahead of purchase. Recommended alternatives for this product can be found below, along with publications, customer reviews and Q&amp;As</p> |

#### 製品の特性

|       |  |
|-------|--|
| 製品の状態 | Liquid   |
| 保存方法  | Shipped at 4°C. Store at +4°C short term (1-2 weeks). Upon delivery aliquot. Store at -20°C or -80°C. Avoid freeze / thaw cycle. |
| バッファー | pH: 7.40<br>Preservative: 0.02% Sodium azide<br>Constituent: PBS   |

Batches of this product that have a concentration < 1mg/ml may have BSA added as a stabilising agent. If you would like information about the formulation of a specific lot, please contact our scientific support team who will be happy to help.

|        |                             |
|--------|-----------------------------|
| 精製度    | Immunogen affinity purified |
| ポリ/モノ  | ポリクローナル                     |
| アイソタイプ | IgG                         |

## アプリケーション

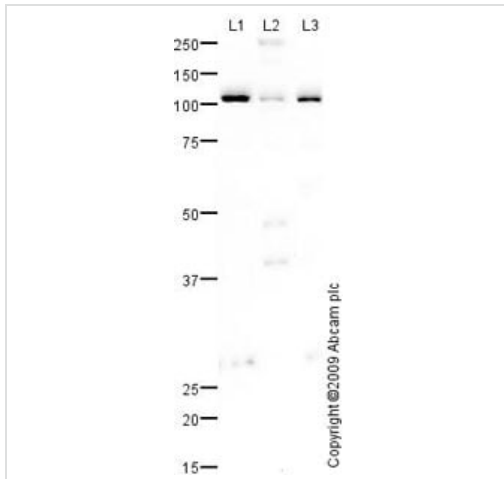
**The Abpromise guarantee** **Abpromise保証は、次のテスト済みアプリケーションにおけるab70138の使用に適用されます**  
 アプリケーションノートには、推奨の開始希釈率がありますが、適切な希釈率につきましてはご検討ください。

| アプリケーション | Abreviews | 特記事項  |
|----------|-----------|---|
| WB       | ★★★★☆ (3) | Use a concentration of 1 µg/ml. Detects a band of approximately 110 kDa (predicted molecular weight: 99 kDa). |

## ターゲット情報

|              |   |
|--------------|---|
| <b>機能</b>    | Plays important roles in controlling the metabolism of fatty acids at different levels. Acts as a magnesium-dependent phosphatidate phosphatase enzyme which catalyzes the conversion of phosphatidic acid to diacylglycerol during triglyceride, phosphatidylcholine and phosphatidylethanolamine biosynthesis in the reticulum endoplasmic membrane. Acts also as a nuclear transcriptional coactivator for PPARGC1A/PPARA to modulate lipid metabolism gene expression (By similarity). Is involved in adipocyte differentiation. May also be involved in mitochondrial fission by converting phosphatidic acid to diacylglycerol. |
| <b>組織特異性</b> | Abundant in adipose tissue and skeletal muscle. Lower levels in some portions of the digestive tract.   |
| <b>関連疾患</b>  | Defects in LPIN1 are a cause of autosomal recessive acute recurrent myoglobinuria (ARARM) [MIM:268200]; also known as acute recurrent rhabdomyolysis. Recurrent myoglobinuria is characterized by recurrent attacks of rhabdomyolysis (necrosis or disintegration of skeletal muscle) associated with muscle pain and weakness and followed by excretion of myoglobin in the urine. Renal failure may occasionally occur. Onset is usually in early childhood under the age of 5 years.   |
| <b>配列類似性</b> | Belongs to the lipin family.  |
| <b>ドメイン</b>  | Contains one Leu-Xaa-Xaa-Ile-Leu (LXXIL), a transcriptional binding motif, which mediates interaction with PPARA.<br>Contains 1 Asp-Xaa-Asp-Xaa-Thr (DXDXT) motif, a catalytic motif essential for phosphatidate phosphatase activity.  |
| <b>翻訳後修飾</b> | Phosphorylated at multiple sites in response to insulin. Phosphorylation is controlled by the mTOR signaling pathway (By similarity). Dephosphorylated in response to epinephrine and oleic acid. Sumoylated.   |
| <b>細胞内局在</b> | Nucleus. Cytoplasm > cytosol. Endoplasmic reticulum membrane.   |

## 画像



Western blot - Anti-Lipin 1 antibody (ab70138)

**All lanes** : Anti-Lipin 1 antibody (ab70138) at 1 µg/ml

**Lane 1** : Liver (Mouse) Tissue Lysate

**Lane 2** : Pancreas (Mouse) Tissue Lysate

**Lane 3** : Kidney (Mouse) Tissue Lysate

Lysates/proteins at 10 µg per lane.

#### Secondary

**All lanes** : Goat polyclonal to Rabbit IgG - H&L - Pre-Adsorbed (HRP) at 1/3000 dilution

Developed using the ECL technique.

Performed under reducing conditions.

**Predicted band size:** 99 kDa

**Observed band size:** 110 kDa

**Please note:** All products are "FOR RESEARCH USE ONLY. NOT FOR USE IN DIAGNOSTIC PROCEDURES"

#### Our Abpromise to you: Quality guaranteed and expert technical support

- Replacement or refund for products not performing as stated on the datasheet
- Valid for 12 months from date of delivery
- Response to your inquiry within 24 hours
- We provide support in Chinese, English, French, German, Japanese and Spanish
- Extensive multi-media technical resources to help you
- We investigate all quality concerns to ensure our products perform to the highest standards

If the product does not perform as described on this datasheet, we will offer a refund or replacement. For full details of the Abpromise, please visit <https://www.abcam.co.jp/abpromise> or contact our technical team.

#### Terms and conditions

- Guarantee only valid for products bought direct from Abcam or one of our authorized distributors