

Anti-LIPG antibody ab24447

★☆☆☆☆ **1 Abreviews** **3 References** 画像数 **1**

製品の概要

製品名	Anti-LIPG antibody
製品の詳細	Rabbit polyclonal to LIPG
由来種	Rabbit
特異性	ab24447 reacts with Endothelial lipase.
アプリケーション	適用あり: WB
種交差性	交差種: Human
免疫原	Synthetic peptide surrounding amino acid 22 of human Endothelial Lipase. (Peptide available as ab53323 .)
特記事項	<p>This product is manufactured by BioVision, an Abcam company and was previously called 3657 Endothelial Lipase Antibody. 3657-100 is the same size as the 100 µg size of ab24447.</p> <p>The Life Science industry has been in the grips of a reproducibility crisis for a number of years. Abcam is leading the way in addressing this with our range of recombinant monoclonal antibodies and knockout edited cell lines for gold-standard validation. Please check that this product meets your needs before purchasing.</p> <p>If you have any questions, special requirements or concerns, please send us an inquiry and/or contact our Support team ahead of purchase. Recommended alternatives for this product can be found below, along with publications, customer reviews and Q&As</p>

製品の特性

製品の状態	Liquid
保存方法	Shipped at 4°C. Upon delivery aliquot and store at -20°C. Avoid freeze / thaw cycles.
バッファー	Preservative: 0.02% Sodium azide Constituents: PBS, 50% Glycerol (glycerin, glycerine), 1% BSA
精製度	Immunogen affinity purified
ポリ/モノ	ポリクローナル
アイソタイプ	IgG

アプリケーション

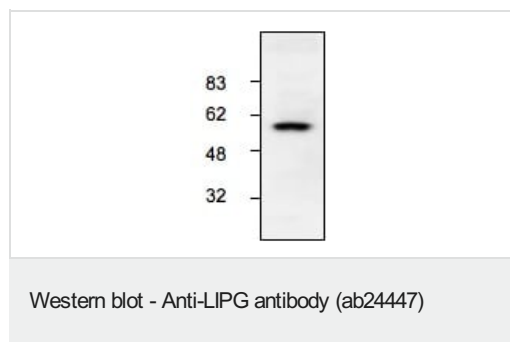
The Abpromise guarantee Abpromise保証は、次のテスト済みアプリケーションにおけるab24447の使用に適用されます
 アプリケーションノートには、推奨の開始希釈率がありますが、適切な希釈率につきましてはご確認ください。

アプリケーション	Abreviews	特記事項
WB		Use a concentration of 1 - 4 µg/ml. Detects a band of approximately 57 kDa.

ターゲット情報

機能	Has phospholipase and triglyceride lipase activities. Hydrolyzes high density lipoproteins (HDL) more efficiently than other lipoproteins. Binds heparin.
組織特異性	High level of expression in the liver, placenta, lung, thyroid, kidney, testis and in the corpus luteum of the ovary. Expressed also in coronary artery endothelial cells, umbilical vein endothelial cells and in hepatocyte and osteosarcoma cell lines. Not detected in heart, brain and muscle.
配列類似性	Belongs to the AB hydrolase superfamily. Lipase family. Contains 1 PLAT domain.
細胞内局在	Secreted.

画像



Anti-LIPG antibody (ab24447) + HepG2 lysate

Observed band size: 57 kDa

Use ab24447 at 1-4µg/ml.

Please note: All products are "FOR RESEARCH USE ONLY. NOT FOR USE IN DIAGNOSTIC PROCEDURES"

Our Abpromise to you: Quality guaranteed and expert technical support

- Replacement or refund for products not performing as stated on the datasheet
- Valid for 12 months from date of delivery
- Response to your inquiry within 24 hours
- We provide support in Chinese, English, French, German, Japanese and Spanish
- Extensive multi-media technical resources to help you
- We investigate all quality concerns to ensure our products perform to the highest standards

If the product does not perform as described on this datasheet, we will offer a refund or replacement. For full details of the Abpromise, please visit <https://www.abcam.co.jp/abpromise> or contact our technical team.

Terms and conditions

- Guarantee only valid for products bought direct from Abcam or one of our authorized distributors