

Anti-LIP1 antibody ab90573

★★★★★ [2 Abreviews](#) [画像数 2](#)

製品の概要

製品名	Anti-LIP1 antibody
製品の詳細	Rabbit polyclonal to LIP1
由来種	Rabbit
アプリケーション	適用あり: WB, IP
種交差性	交差種: Human 交差が予測される動物種: Chimpanzee, Baboon, Rhesus monkey, Gorilla, Orangutan 
免疫原	Synthetic peptide corresponding to Human LIP1 aa 900-950 (internal sequence). Database link: NP_443134.2
ポジティブ・コントロール	HeLa whole cell lysate (ab150035)
特記事項	<p>The Life Science industry has been in the grips of a reproducibility crisis for a number of years. Abcam is leading the way in addressing this with our range of recombinant monoclonal antibodies and knockout edited cell lines for gold-standard validation. Please check that this product meets your needs before purchasing.</p> <p>If you have any questions, special requirements or concerns, please send us an inquiry and/or contact our Support team ahead of purchase. Recommended alternatives for this product can be found below, along with publications, customer reviews and Q&As</p>

製品の特性

製品の状態	Liquid
保存方法	Shipped at 4°C. Upon delivery aliquot and store at -20°C. Avoid freeze / thaw cycles.
バッファー	pH: 7 Preservative: 0.09% Sodium azide Constituent: Tris citrate/phosphate
精製度	Immunogen affinity purified
ポリ/モノ	ポリクローナル
アイソタイプ	IgG

アプリケーション

The Abpromise guarantee

Abpromise保証は、次のテスト済みアプリケーションにおけるab90573の使用に適用されず

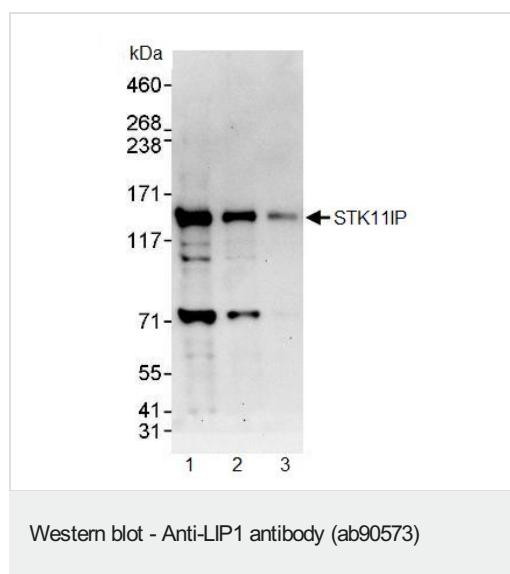
アプリケーションノートには、推奨の開始希釈率がありますが、適切な希釈率につきましてはご検討ください。

アプリケーション	Abreviews	特記事項
WB	★★★★★ (1)	1/2000 - 1/10000. Predicted molecular weight: 121 kDa.
IP	★★★★★ (1)	Use at 2-5 µg/mg of lysate.

ターゲット情報

機能	May regulate STK11 function by controlling its subcellular localization.
配列類似性	Belongs to the STK11IP family. Contains 8 LRR (leucine-rich) repeats.
細胞内局在	Cytoplasm. Some cells show granular or punctuate expression. Colocalizes with STK11 and SMAD4 in granular or punctuate structures.

画像



All lanes : Anti-LIP1 antibody (ab90573) at 0.4 µg/ml

Lane 1 : HeLa whole cell lysate at 50 µg

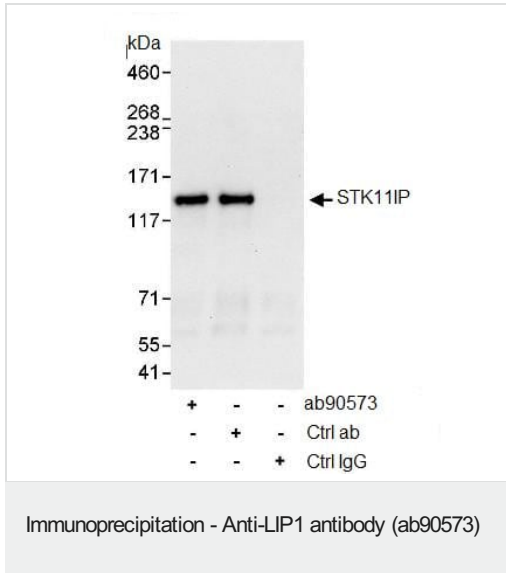
Lane 2 : HeLa whole cell lysate at 15 µg

Lane 3 : HeLa whole cell lysate at 5 µg

Developed using the ECL technique.

Predicted band size: 121 kDa

Exposure time: 30 seconds



ab90573 at 1 µg/ml detecting LIP1 following immunoprecipitation.
 Lane 1; IP HeLa (Human cervix adenocarcinoma epithelial cell) whole cell lysate using ab90573
 Lane 2; IP HeLa whole cell lysate using an antibody to an upstream epitope of LIP1
 Lane 3; IP using control IgG
 All antibodies used at 3 µg/mg lysate. 1 mg of lysate precipitated and 20% loaded.
 Developed using the ECL technique with a 30 second exposure.

Please note: All products are "FOR RESEARCH USE ONLY. NOT FOR USE IN DIAGNOSTIC PROCEDURES"

Our Abpromise to you: Quality guaranteed and expert technical support

- Replacement or refund for products not performing as stated on the datasheet
- Valid for 12 months from date of delivery
- Response to your inquiry within 24 hours
- We provide support in Chinese, English, French, German, Japanese and Spanish
- Extensive multi-media technical resources to help you
- We investigate all quality concerns to ensure our products perform to the highest standards

If the product does not perform as described on this datasheet, we will offer a refund or replacement. For full details of the Abpromise, please visit <https://www.abcam.co.jp/abpromise> or contact our technical team.

Terms and conditions

- Guarantee only valid for products bought direct from Abcam or one of our authorized distributors