

Anti-Lin28A antibody [EPR4640] ab124765

リコンビナント **RabMAb**

10 References **画像数 7**

製品の概要

製品名	Anti-Lin28A antibody [EPR4640]
製品の詳細	Rabbit monoclonal [EPR4640] to Lin28A
由来種	Rabbit
アプリケーション	適用あり: Flow Cyt (Intra), WB, IP, ICC/IF 適用なし: IHC-P
種交差性	交差種: Human
免疫原	Synthetic peptide. This information is proprietary to Abcam and/or its suppliers.
ポジティブ・コントロール	WB: NCCIT and JAR whole cell lysates. IP: NCCIT whole cell lysates. Flow Cyt (intra): NCCIT cells. ICC/IF: JAR cells and NCCIT cells.
特記事項	<p>This product is a recombinant monoclonal antibody, which offers several advantages including:</p> <ul style="list-style-type: none"> - High batch-to-batch consistency and reproducibility - Improved sensitivity and specificity - Long-term security of supply - Animal-free production <p>For more information see here.</p> <p>Our RabMAb[®] technology is a patented hybridoma-based technology for making rabbit monoclonal antibodies. For details on our patents, please refer to RabMAb[®] patents.</p> <p>Mouse, Rat: We have preliminary internal testing data to indicate this antibody may not react with these species. Please contact us for more information.</p>

製品の特性

製品の状態	Liquid
保存方法	Shipped at 4°C. Store at +4°C short term (1-2 weeks). Upon delivery aliquot. Store at -20°C long term. Avoid freeze / thaw cycle.
バッファー	pH: 7.20 Preservative: 0.01% Sodium azide Constituents: 59% PBS, 40% Glycerol, 0.05% BSA
精製度	Protein A purified

ポリ/モノ	モノクローナル
クローン名	EPR4640
アイソタイプ	IgG

アプリケーション

The Abpromise guarantee **Abpromise保証は、次のテスト済みアプリケーションにおけるab124765の使用に適用されます**
 アプリケーションノートには、推奨の開始希釈率がありますが、適切な希釈率につきましてはご確認ください。

アプリケーション	Abreviews	特記事項
Flow Cyt (Intra)		1/10 - 1/100. ab172730 - Rabbit monoclonal IgG, is suitable for use as an isotype control with this antibody.
WB		1/10000 - 1/50000. Detects a band of approximately 26 kDa (predicted molecular weight: 23 kDa).
IP		1/10 - 1/100.
ICC/IF		1/100 - 1/500.

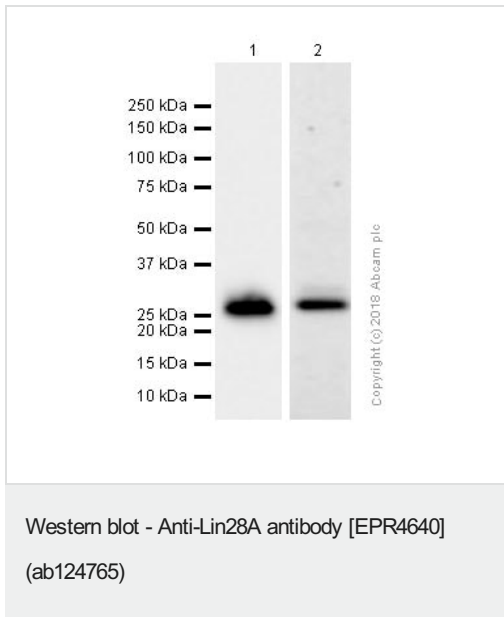
追加情報 Is unsuitable for IHC-P.

ターゲット情報

機能	Acts as a 'translational enhancer', driving specific mRNAs to polysomes and thus increasing the efficiency of protein synthesis. Its association with the translational machinery and target mRNAs results in an increased number of initiation events per molecule of mRNA and, indirectly, in stabilizing the mRNAs. Binds IGF2 mRNA, MYOD1 mRNA, ARBP/36B4 ribosomal protein mRNA and its own mRNA. Essential for skeletal muscle differentiation program through the translational up-regulation of IGF2 expression (By similarity). Acts as a suppressor of microRNA (miRNA) biogenesis by specifically binding the precursor let-7 (pre-let-7), a miRNA precursor. Acts by binding pre-let-7 and recruiting ZCCHC11/TUT4 uridylyltransferase, leading to the terminal uridylation of pre-let-7. Uridylated pre-let-7 miRNAs fail to be processed by Dicer and undergo degradation. Degradation of pre-let-7 in embryonic stem (ES) cells contributes to the maintenance of ES cells. In contrast, LIN28A down-regulation in neural stem cells by miR-125, allows the processing of pre-let-7. Specifically recognizes the 5'-GGAG-3' motif in the terminal loop of pre-let-7. Also recognizes and binds non pre-let-7 pre-miRNAs that contain the 5'-GGAG-3' motif in the terminal loop, leading to their terminal uridylation and subsequent degradation.
組織特異性	Expressed in embryonic stem cells (ES cells), placenta and testis.
配列類似性	Belongs to the lin-28 family. Contains 2 CCHC-type zinc fingers. Contains 1 CSD (cold-shock) domain.
発生段階	Expressed in fetal liver. Expression decreases during differentiation of ES cells or upon induction of neuronal differentiation by retinoic acid.
ドメイン	The CSD domain is required for function in muscle differentiation.
細胞内局在	Cytoplasm. Nucleus > nucleolus. Nucleolar localization observed in 10-15% of the nuclei in

differentiated myotubes (By similarity). Shuttles between the cytoplasm and the nucleus. Localizes to cytoplasmic processing bodies and stress granules.

画像



All lanes : Anti-Lin28A antibody [EPR4640] (ab124765) at 1/10000 dilution (Purified)

Lane 1 : NCCIT (Human pluripotent embryonic carcinoma epithelial cell) whole cell lysates

Lane 2 : JAR (Human placenta choriocarcinoma epithelial cell) whole cell lysates

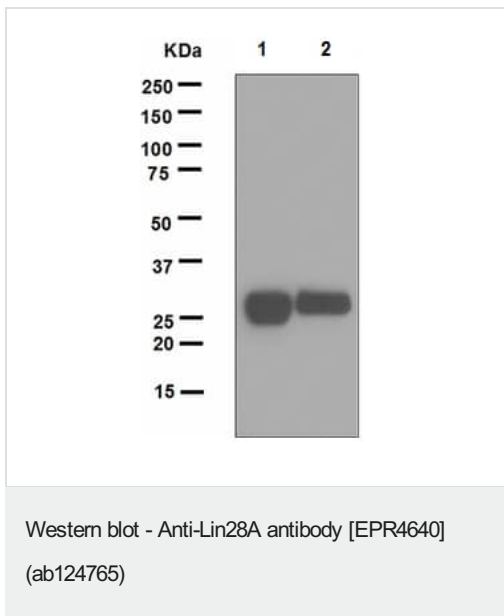
Lysates/proteins at 20 µg per lane.

Secondary

All lanes : Goat Anti-Rabbit IgG H&L (HRP) ([ab97051](#)) at 1/20000 dilution

Predicted band size: 23 kDa

Observed band size: 26 kDa



All lanes : Anti-Lin28A antibody [EPR4640] (ab124765) at 1/10000 dilution (unpurified)

Lane 1 : NCCIT cell lysate

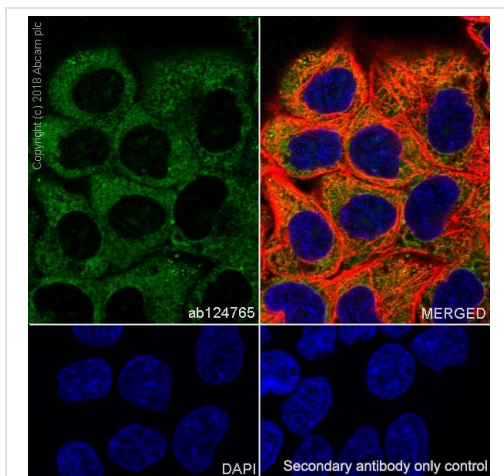
Lane 2 : JAR cell lysate

Lysates/proteins at 10 µg per lane.

Secondary

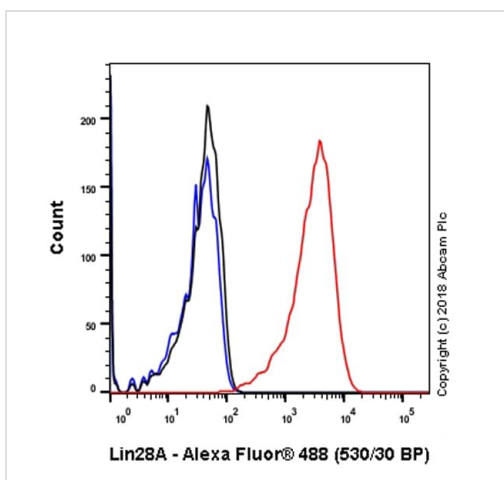
All lanes : Goat anti-Rabbit HRP at 1/2000 dilution

Predicted band size: 23 kDa



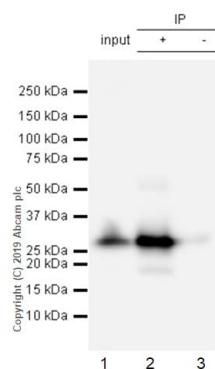
Immunocytochemistry/ Immunofluorescence - Anti-Lin28A antibody [EPR4640] (ab124765)

Immunocytochemistry/ Immunofluorescence analysis of JAR (Human placenta choriocarcinoma epithelial cell) cells labeling Lin28A with purified ab124765 at 1/500 dilution (1.2 µg/ml). Cells were fixed in 4% Paraformaldehyde and permeabilized with 0.1% tritonX-100. Cells were counterstained with **ab195889** Anti-alpha Tubulin antibody [DM1A] - Microtubule Marker (Alexa Fluor® 594) at 1:200 (2.5 µg/ml). Goat anti rabbit IgG (Alexa Fluor® 488, **ab150077**) was used as the secondary antibody at 1/1000 (2 µg/ml) dilution. DAPI (blue) was used as nuclear counterstain. PBS instead of the primary antibody was used as the secondary antibody only control.



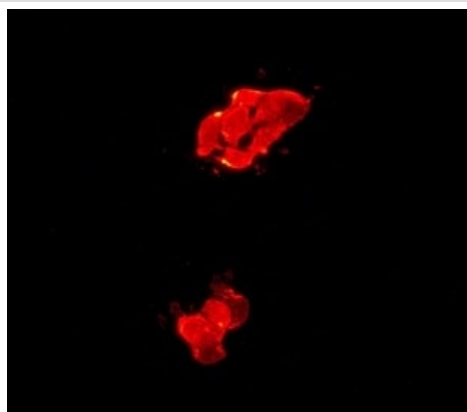
Flow Cytometry (Intracellular) - Anti-Lin28A antibody [EPR4640] (ab124765)

Intracellular Flow Cytometry analysis of NCCIT (Human pluripotent embryonic carcinoma epithelial cell) cells labeling Lin28A with purified ab124765 at 1/60 dilution (10µg/ml) (red). Cells were fixed with 4% Paraformaldehyde and permeabilised with 90% Methanol. A Goat anti rabbit IgG (Alexa Fluor® 488, **ab150077**) secondary antibody was used at 1/2000. Isotype control - Rabbit monoclonal IgG (Black). Unlabeled control - Cell without incubation with primary antibody and secondary antibody (Blue).



Immunoprecipitation - Anti-Lin28A antibody
[EPR4640] (ab124765)

ab124765 (purified) at 1/30 dilution (2ug) immunoprecipitating Lin28A in NCCIT whole cell lysate. NCCIT (Human pluripotent embryonic carcinoma epithelial cell) whole cell lysate 10ug
Lane 2 (+): ab124765 & NCCIT whole cell lysate
Lane 3 (-): Rabbit monoclonal IgG ([ab172730](#)) instead of ab124765 in NCCIT whole cell lysate
For western blotting, VeriBlot for IP secondary antibody (HRP) ([ab131366](#)) was used at 1/1000 dilution.
Blocking and diluting buffer: 5% NFDM/TBST.



Immunocytochemistry/ Immunofluorescence - Anti-Lin28A antibody [EPR4640] (ab124765)

ab124765 (unpurified), at 1/100 dilution, staining Lin28A in NCCIT cells by Immunofluorescence.

Why choose a recombinant antibody?



Research with confidence
Consistent and reproducible results



Long-term and scalable supply
Recombinant technology



Success from the first experiment
Confirmed specificity



Ethical standards compliant
Animal-free production

Anti-Lin28A antibody [EPR4640] (ab124765)

Please note: All products are "FOR RESEARCH USE ONLY. NOT FOR USE IN DIAGNOSTIC PROCEDURES"

Our Abpromise to you: Quality guaranteed and expert technical support

- Replacement or refund for products not performing as stated on the datasheet
- Valid for 12 months from date of delivery
- Response to your inquiry within 24 hours
- We provide support in Chinese, English, French, German, Japanese and Spanish
- Extensive multi-media technical resources to help you
- We investigate all quality concerns to ensure our products perform to the highest standards

If the product does not perform as described on this datasheet, we will offer a refund or replacement. For full details of the Abpromise, please visit <https://www.abcam.co.jp/abpromise> or contact our technical team.

Terms and conditions

- Guarantee only valid for products bought direct from Abcam or one of our authorized distributors