


### Anti-Lin28A antibody ab63740

★★★★☆ [5 Abreviews](#) [14 References](#) [画像数 5](#)

#### 製品の概要

製品名	Anti-Lin28A antibody
製品の詳細	Rabbit polyclonal to Lin28A
由来種	Rabbit
特異性	From Jan 2024, QC testing of replenishment batches of this polyclonal changed. All tested and expected application and reactive species combinations are still covered by our Abcam product promise. However, we no longer test all applications. For more information on a specific batch, please contact our Scientific Support who will be happy to help.
アプリケーション	<b>適用あり:</b> IP, Sandwich ELISA, ICC/IF, WB
種交差性	<b>交差種:</b> Mouse, Human <b>交差が予測される動物種:</b> Rat, Horse, Pig, Chimpanzee 
免疫原	Synthetic peptide. This information is proprietary to Abcam and/or its suppliers.
ポジティブ・コントロール	WB: HUES-7, MEL-1, F9. ES-E14TG2a, Mouse EG. ICC/IF: mES cells.
特記事項	<p>The Life Science industry has been in the grips of a reproducibility crisis for a number of years. Abcam is leading the way in addressing this with our range of recombinant monoclonal antibodies and knockout edited cell lines for gold-standard validation. Please check that this product meets your needs before purchasing.</p> <p>If you have any questions, special requirements or concerns, please send us an inquiry and/or contact our Support team ahead of purchase. Recommended alternatives for this product can be found below, along with publications, customer reviews and Q&amp;As</p>

#### 製品の特性

製品の状態	Liquid
保存方法	Shipped at 4°C. Store at +4°C short term (1-2 weeks). Upon delivery aliquot. Store at -20°C or -80°C. Avoid freeze / thaw cycle.
バッファー	pH: 7.40 Preservative: 0.02% Sodium azide Constituent: PBS

Batches of this product that have a concentration < 1mg/ml may have BSA added as a stabilising agent. If you would like information about the formulation of a specific lot, please contact our

scientific support team who will be happy to help.

精製度	Immunogen affinity purified
ポリ/モノ	ポリクローナル
アイソタイプ	IgG

## アプリケーション

**The Abpromise guarantee** **Abpromise保証は、次のテスト済みアプリケーションにおけるab63740の使用に適用されます**

アプリケーションノートには、推奨の開始希釈率がありますが、適切な希釈率につきましてはご確認ください。

アプリケーション	Abreviews	特記事項
IP		Use a concentration of 5 µg/ml.
Sandwich ELISA		Use a concentration of 0.1 µg/ml. Can be paired for Sandwich ELISA with <b>Mouse monoclonal [6D1F9] to Lin28A (ab76369)</b> . For sandwich ELISA, use this antibody as Detection at 0.1 µg/ml with <b>Mouse monoclonal [6D1F9] to Lin28 (ab76369)</b> as Capture.
ICC/IF	★★★★☆ (2)	Use a concentration of 1 µg/ml.
WB	★★★★★ (2)	Use a concentration of 1 µg/ml. Detects a band of approximately 30 kDa (predicted molecular weight: 23 kDa).

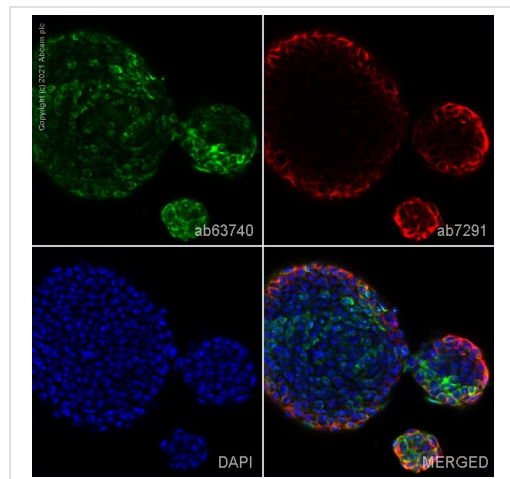
## ターゲット情報

機能	Acts as a 'translational enhancer', driving specific mRNAs to polysomes and thus increasing the efficiency of protein synthesis. Its association with the translational machinery and target mRNAs results in an increased number of initiation events per molecule of mRNA and, indirectly, in stabilizing the mRNAs. Binds IGF2 mRNA, MYOD1 mRNA, ARBP/36B4 ribosomal protein mRNA and its own mRNA. Essential for skeletal muscle differentiation program through the translational up-regulation of IGF2 expression (By similarity). Acts as a suppressor of microRNA (miRNA) biogenesis by specifically binding the precursor let-7 (pre-let-7), a miRNA precursor. Acts by binding pre-let-7 and recruiting ZCCHC11/TUT4 uridylyltransferase, leading to the terminal uridylation of pre-let-7. Uridylated pre-let-7 miRNAs fail to be processed by Dicer and undergo degradation. Degradation of pre-let-7 in embryonic stem (ES) cells contributes to the maintenance of ES cells. In contrast, LIN28A down-regulation in neural stem cells by miR-125, allows the processing of pre-let-7. Specifically recognizes the 5'-GGAG-3' motif in the terminal loop of pre-let-7. Also recognizes and binds non pre-let-7 pre-miRNAs that contain the 5'-GGAG-3' motif in the terminal loop, leading to their terminal uridylation and subsequent degradation.
組織特異性	Expressed in embryonic stem cells (ES cells), placenta and testis.
配列類似性	Belongs to the lin-28 family. Contains 2 CCHC-type zinc fingers. Contains 1 CSD (cold-shock) domain.
発生段階	Expressed in fetal liver. Expression decreases during differentiation of ES cells or upon induction of neuronal differentiation by retinoic acid.
ドメイン	The CSD domain is required for function in muscle differentiation.

## 細胞内局在

Cytoplasm. Nucleus > nucleolus. Nucleolar localization observed in 10-15% of the nuclei in differentiated myotubes (By similarity). Shuttles between the cytoplasm and the nucleus. Localizes to cytoplasmic processing bodies and stress granules.

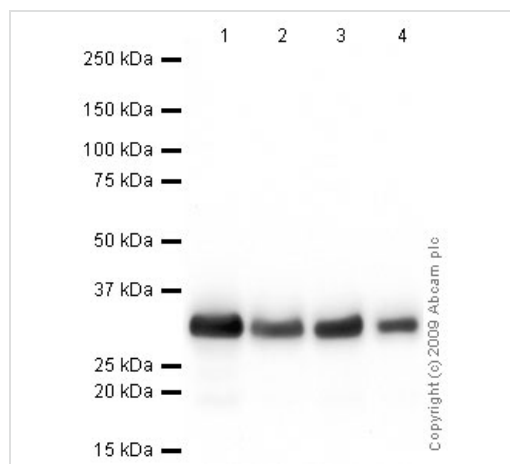
## 画像



Immunocytochemistry/ Immunofluorescence - Anti-Lin28A antibody (ab63740)

ab63740 staining Lin28A in mES cells. The cells were fixed with 100% methanol (5 min), permeabilized with 0.1% PBS-Tween for 5 minutes and then blocked with 1% BSA/10% normal goat serum/0.3M glycine in 0.1% PBS-Tween for 1h. The cells were then incubated overnight at 4°C with ab63740 at 1 µg/ml and **ab7291**, Mouse monoclonal [DM1A] to alpha Tubulin - Loading Control. Cells were then incubated with **ab150081**, Goat polyclonal Secondary Antibody to Rabbit IgG - H&L (Alexa Fluor® 488), pre-adsorbed at 1/1000 dilution (shown in green) and **ab150120**, Goat polyclonal Secondary Antibody to Mouse IgG - H&L (Alexa Fluor® 594), pre-adsorbed at 1/1000 dilution (shown in pseudocolour red). Nuclear DNA was labelled with DAPI (shown in blue).

Image was acquired with a confocal microscope (Leica-Microsystems TCS SP8) and a single confocal section is shown.



Western blot - Anti-Lin28A antibody (ab63740)

**All lanes** : Anti-Lin28A antibody (ab63740) at 1 µg/ml

**Lane 1** : MEL-1 (Human embryonic stem cell, male cell line) Whole Cell Lysate (**ab27198**)

**Lane 2** : F9 (Mouse embryonic carcinoma cell line) Whole Cell Lysate (**ab27193**)

**Lane 3** : E14Tg2a (Mouse embryonic stem cell line) Whole Cell Lysate

**Lane 4** : Mouse EG (TMAS Embryonic Germ Cells) Whole Cell Lysate

Lysates/proteins at 10 µg per lane.

### Secondary

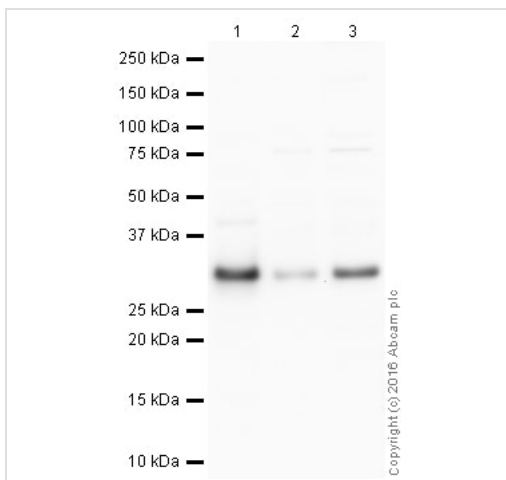
**All lanes** : Goat polyclonal to Rabbit IgG - H&L - Pre-Adsorbed (HRP) at 1/3000 dilution

Performed under reducing conditions.

**Predicted band size:** 23 kDa

**Observed band size:** 30 kDa

The 30 kDa band observed is comparable to molecular weights seen with other commercially available antibodies to Lin28A.



Western blot - Anti-Lin28A antibody (ab63740)

**All lanes :** Anti-Lin28A antibody (ab63740) at 1 µg/ml

**Lane 1 :** HUES7 (Human embryonic stem cell line) Whole Cell Lysate

**Lane 2 :** F9 (Mouse embryonic carcinoma cell line) Whole Cell Lysate

**Lane 3 :** E14Tg2a (Mouse embryonic stem cell line) Whole Cell Lysate

Lysates/proteins at 10 µg per lane.

### Secondary

**All lanes :** Goat polyclonal to Rabbit IgG - H&L - Pre-Adsorbed (HRP) at 1/50000 dilution

Developed using the ECL technique.

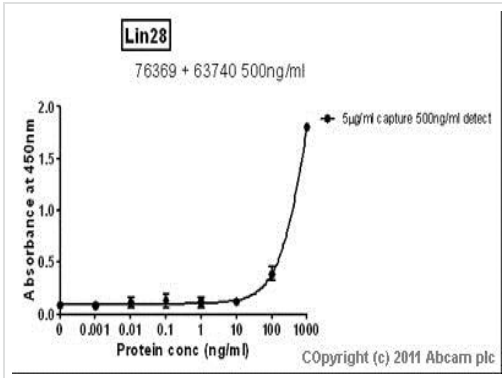
Performed under reducing conditions.

**Predicted band size:** 23 kDa

**Observed band size:** 30 kDa

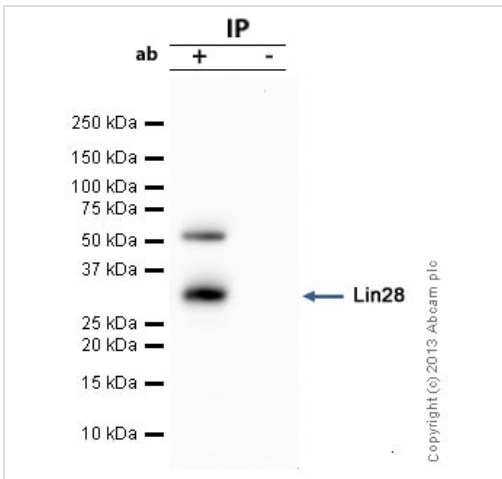
**Exposure time:** 90 seconds

This blot was produced using a 4-12% Bis-tris gel under the MES buffer system. The gel was run at 200V for 35 minutes before being transferred onto a Nitrocellulose membrane at 30V for 70 minutes. The membrane was then blocked for an hour using 2% Bovine Serum Albumin before being incubated with ab63740 overnight at 4°C. Antibody binding was detected using an anti-rabbit antibody conjugated to HRP, and visualised using ECL development solution **ab133406**.



Sandwich ELISA - Anti-Lin28A antibody (ab63740)

Standard Curve for Lin28A (Analyte: (**ab89225**) Lin28 protein (His tag) (**ab89225**)); dilution range 1 pg/ml to 1 ug/ml using Capture Antibody (**ab76369**) Mouse monoclonal [6D1F9] to Lin28A (**ab76369**) at 0.2 ug/ml and Detector Antibody (ab63740) Rabbit polyclonal to Lin28A (ab63740) at 0.1 ug/ml.



Immunoprecipitation - Anti-Lin28A antibody (ab63740)

Lin28A was immunoprecipitated using 0.5mg E14Tg2a whole cell extract, 5µg of Rabbit polyclonal to Lin28A and 50µl of protein G magnetic beads (+). No antibody was added to the control (-). The antibody was incubated under agitation with Protein G beads for 10min, E 14Tg2a whole cell extract lysate diluted in RIPA buffer was added to each sample and incubated for a further 10min under agitation.

Proteins were eluted by addition of 40µl SDS loading buffer and incubated for 10min at 70oC; 10µl of each sample was separated on a SDS PAGE gel, transferred to a nitrocellulose membrane, blocked with 5% BSA and probed with ab63740.

Secondary: Clean blot (HRP conjugate) at 1/1000 dilution.

Band: 30kDa: Lin28A.

**Please note:** All products are "FOR RESEARCH USE ONLY. NOT FOR USE IN DIAGNOSTIC PROCEDURES"

### Our Abpromise to you: Quality guaranteed and expert technical support

- Replacement or refund for products not performing as stated on the datasheet
- Valid for 12 months from date of delivery
- Response to your inquiry within 24 hours
- We provide support in Chinese, English, French, German, Japanese and Spanish
- Extensive multi-media technical resources to help you
- We investigate all quality concerns to ensure our products perform to the highest standards

If the product does not perform as described on this datasheet, we will offer a refund or replacement. For full details of the Abpromise, please visit <https://www.abcam.co.jp/abpromise> or contact our technical team.

## Terms and conditions

---

- Guarantee only valid for products bought direct from Abcam or one of our authorized distributors