

### Anti-LIMK2 (phospho T505) antibody ab38499

★★★★★ [1 Abreviews](#) [16 References](#) [画像数 3](#)

#### 製品の概要

製品名	Anti-LIMK2 (phospho T505) antibody
製品の詳細	Rabbit polyclonal to LIMK2 (phospho T505)
由来種	Rabbit
特異性	This antibody is specific for LIMK2 only when phosphorylated at threonine 505, but may also cross react with LIMK1 phosphorylated at tyrosine 505 based on homology.
アプリケーション	<b>適用あり:</b> WB, IHC-P, ICC/IF
種交差性	<b>交差種:</b> Human
免疫原	Synthetic peptide corresponding to Human LIMK-2 (phospho T505).
特記事項	<p>The Life Science industry has been in the grips of a reproducibility crisis for a number of years. Abcam is leading the way in addressing this with our range of recombinant monoclonal antibodies and knockout edited cell lines for gold-standard validation. Please check that this product meets your needs before purchasing.</p> <p>If you have any questions, special requirements or concerns, please send us an inquiry and/or contact our Support team ahead of purchase. Recommended alternatives for this product can be found below, along with publications, customer reviews and Q&amp;As</p>

#### 製品の特性

製品の状態	Liquid
保存方法	Shipped at 4°C. Upon delivery aliquot and store at -20°C. Avoid freeze / thaw cycles.
バッファー	<p>pH: 7</p> <p>Preservative: 0.02% Sodium azide</p> <p>Constituents: 50% Glycerol (glycerin, glycerine), 0.87% Sodium chloride, PBS</p>
精製度	Immunogen affinity purified
特記事項(精製)	The antibody against non-phosphopeptide was removed by chromatography using non-phosphopeptide corresponding to the phosphorylation site.
ポリ/モノ	ポリクローナル
アイソタイプ	IgG

#### アプリケーション

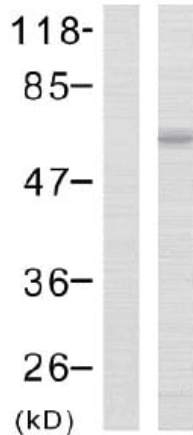
**The Abpromise guarantee**      **Abpromise保証は、次のテスト済みアプリケーションにおけるab38499の使用に適用されます**  
 アプリケーションノートには、推奨の開始希釈率がありますが、適切な希釈率につきましてはご検討ください。

アプリケーション	Abreviews	特記事項
WB	★★★★★ (1)	1/500 - 1/1000. Detects a band of approximately 70 kDa (predicted molecular weight: 72 kDa).
IHC-P		Use at an assay dependent concentration.
ICC/IF		Use a concentration of 1 - 5 µg/ml.

## ターゲット情報

機能	Displays serine/threonine-specific phosphorylation of myelin basic protein and histone (MBP) in vitro.
組織特異性	Highest expression in the placenta; moderate level in liver, lung, kidney, and pancreas. LIMK2a is found to be more abundant then LIMK2b in liver, colon, stomach, and spleen, while in brain, kidney, and placenta LIMK2b is the dominant form. In adult lung, both LIMK2a and LIMK2b is nearly equally observed.
配列類似性	Belongs to the protein kinase superfamily. TKL Ser/Thr protein kinase family. Contains 2 LIM zinc-binding domains. Contains 1 PDZ (DHR) domain. Contains 1 protein kinase domain.
翻訳後修飾	Phosphorylated on serine and/or threonine residues by ROCK1.
細胞内局在	Cytoplasm. Nucleus. Isoform LIMK2a is distributed in the cytoplasm and the nucleus and Cytoplasm. Nucleus. Isoform LIMK2b occurs mainly in the cytoplasm and is scarcely translocated to the nucleus.

## 画像



Western blot - Anti-LIMK2 (phospho T505) antibody (ab38499)

**All lanes :** Anti-LIMK2 (phospho T505) antibody (ab38499) at 1/500 dilution

**Lane 1 :** MCF7 cell extract (5-30ug of total protein) pre-incubated with phosphopeptide.

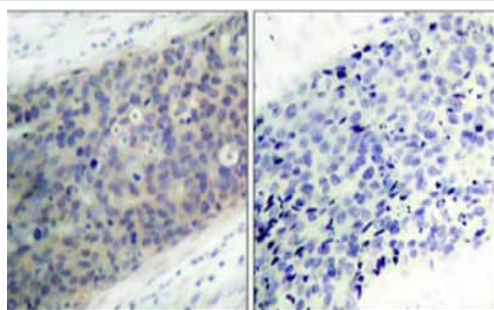
**Lane 2 :** MCF7 cell extract (5-30ug of total protein).

#### Secondary

**All lanes :** Alkaline Phosphatase Goat Anti-Rabbit IgG (H+L)

**Predicted band size:** 72 kDa

**Observed band size:** 70 kDa

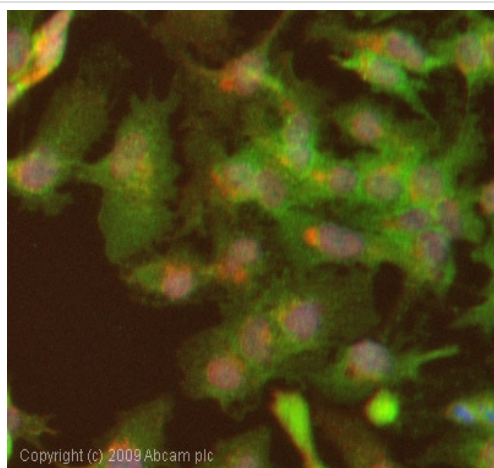


Immunohistochemistry (Formalin/PFA-fixed paraffin-embedded sections) - Anti-LIMK2 (phospho T505) antibody (ab38499)

ab38499 at a 1:50 dilution staining LIMK2 in Human breast carcinoma tissue using Immunohistochemistry, Paraffin Embedded Tissue.

Left image : untreated.

Right image : treated with phosphopeptide.



Immunocytochemistry/ Immunofluorescence - Anti-LIMK2 (phospho T505) antibody (ab38499)

ICC/IF image of ab38499 stained HepG2 cells. The cells were 4% PFA fixed (10 min) and then incubated in 1%BSA / 10% normal goat serum / 0.3M glycine in 0.1% PBS-Tween for 1h to permeabilise the cells and block non-specific protein-protein interactions. The cells were then incubated with the antibody (ab38499, 1µg/ml) overnight at +4°C. The secondary antibody (green) was Alexa Fluor® 488 goat anti-rabbit IgG (H+L) used at a 1/1000 dilution for 1h. Alexa Fluor® 594 WGA was used to label plasma membranes (red) at a 1/200 dilution for 1h. DAPI was used to stain the cell nuclei (blue) at a concentration of 1.43µM.

**Please note:** All products are "FOR RESEARCH USE ONLY. NOT FOR USE IN DIAGNOSTIC PROCEDURES"

## **Our Abpromise to you: Quality guaranteed and expert technical support**

---

- Replacement or refund for products not performing as stated on the datasheet
- Valid for 12 months from date of delivery
- Response to your inquiry within 24 hours
  
- We provide support in Chinese, English, French, German, Japanese and Spanish
- Extensive multi-media technical resources to help you
- We investigate all quality concerns to ensure our products perform to the highest standards

If the product does not perform as described on this datasheet, we will offer a refund or replacement. For full details of the Abpromise, please visit <https://www.abcam.co.jp/abpromise> or contact our technical team.

## **Terms and conditions**

---

- Guarantee only valid for products bought direct from Abcam or one of our authorized distributors