


Anti-LIMK2 antibody [EP969Y] - C-terminal ab45165

KO 評価済 リコンビナント RabMAb

★★★★☆ 2 Abreviews 8 References 画像数 5

製品の概要

製品名	Anti-LIMK2 antibody [EP969Y] - C-terminal
製品の詳細	Rabbit monoclonal [EP969Y] to LIMK2 - C-terminal
由来種	Rabbit
アプリケーション	適用あり: IHC-P, ICC/IF, WB
種交差性	交差種: Human 交差が予測される動物種: Mouse, Rat 
免疫原	Synthetic peptide. This information is proprietary to Abcam and/or its suppliers.
ポジティブ・コントロール	WB: Wild-type HAP1 cell lysate. Jurkat cell lysate. Ramos membrane lysate. IHC-P: Human endometrium carcinoma tissue. ICC/IF: Ramos cells.
特記事項	Our RabMAb [®] technology is a patented hybridoma-based technology for making rabbit monoclonal antibodies. For details on our patents, please refer to RabMAb[®] patents .

製品の特性

製品の状態	Liquid
保存方法	Shipped at 4°C. Upon delivery aliquot and store at -20°C. Avoid freeze / thaw cycles.
バッファー	pH: 7.20 Preservative: 0.01% Sodium azide Constituents: PBS, 40% Glycerol (glycerin, glycerine), 0.5% BSA
精製度	Protein A purified
ポリモノ	モノクローナル
クローン名	EP969Y
アイソタイプ	IgG

アプリケーション

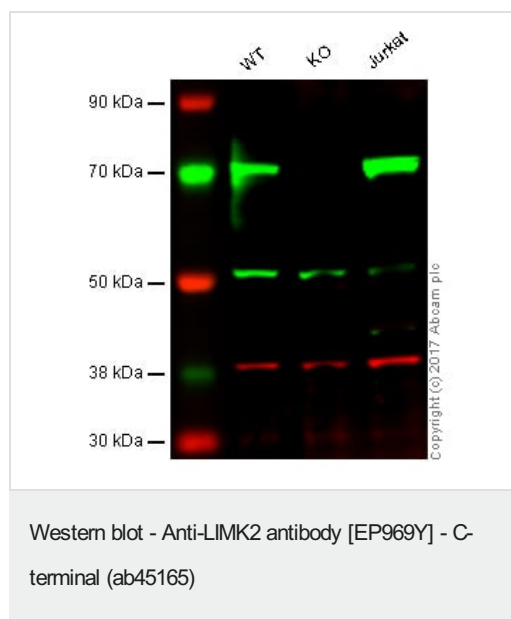
The Abpromise guarantee **Abpromise保証は、** 次のテスト済みアプリケーションにおけるab45165の使用に適用されます
アプリケーションノートには、推奨の開始希釈率がありますが、適切な希釈率につきましてはご検討ください。

アプリケーション	Abreviews	特記事項
IHC-P	★★★★★ (1)	1/250. Perform heat mediated antigen retrieval before commencing with IHC staining protocol.
ICC/IF		1/50 - 1/100.
WB	★★★★★ (1)	1/2000. Predicted molecular weight: 72 kDa.

ターゲット情報

機能	Displays serine/threonine-specific phosphorylation of myelin basic protein and histone (MBP) in vitro.
組織特異性	Highest expression in the placenta; moderate level in liver, lung, kidney, and pancreas. LIMK2a is found to be more abundant than LIMK2b in liver, colon, stomach, and spleen, while in brain, kidney, and placenta LIMK2b is the dominant form. In adult lung, both LIMK2a and LIMK2b is nearly equally observed.
配列類似性	Belongs to the protein kinase superfamily. TKL Ser/Thr protein kinase family. Contains 2 LIM zinc-binding domains. Contains 1 PDZ (DHR) domain. Contains 1 protein kinase domain.
翻訳後修飾	Phosphorylated on serine and/or threonine residues by ROCK1.
細胞内局在	Cytoplasm. Nucleus. Isoform LIMK2a is distributed in the cytoplasm and the nucleus and Cytoplasm. Nucleus. Isoform LIMK2b occurs mainly in the cytoplasm and is scarcely translocated to the nucleus.

画像



Lane 1: Wild-type HAP1 whole cell lysate (40 µg)

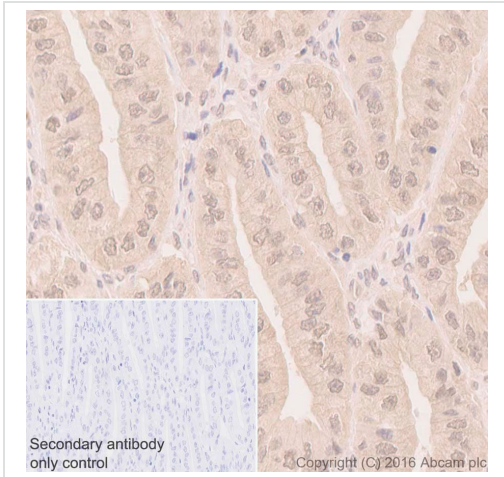
Lane 2: LIMK2 (LIMK2) knockout HAP1 whole cell lysate (40 µg)

Lane 3: Jurkat whole cell lysate (40 µg)

Lanes 1 - 3: Merged signal (red and green). Green - ab45165 observed at 72 kDa. Red - loading control, [ab9484](#), observed at 37 kDa.

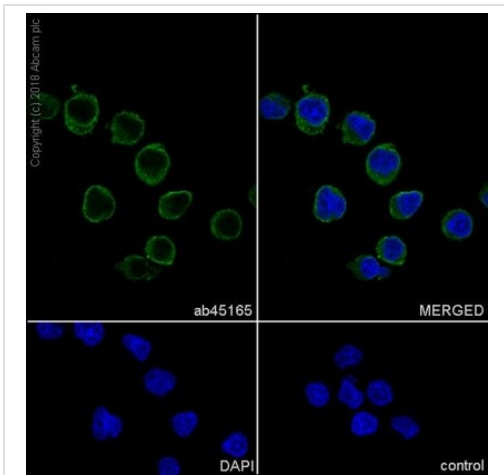
ab45165 was shown to specifically recognize LIMK2 (LIMK2) in wild-type HAP1 cells along with additional cross-reactive bands. No band was observed with knockout cells were examined. Wild-type and LIMK2 (LIMK2) knockout samples were subjected to SDS-PAGE. Ab45165 and [ab9484](#) (Mouse anti GAPDH loading control) were incubated overnight at 4°C at 1/2000 dilution and 1/20,000 dilution respectively. Blots were developed with Goat anti-Rabbit IgG H&L (IRDye® 800CW) preabsorbed ([ab216773](#)) and Goat anti-Mouse IgG H&L (IRDye® 680RD) preabsorbed ([ab216776](#)) secondary antibodies at 1/20,000 dilution for 1 hour at room

temperature before imaging.



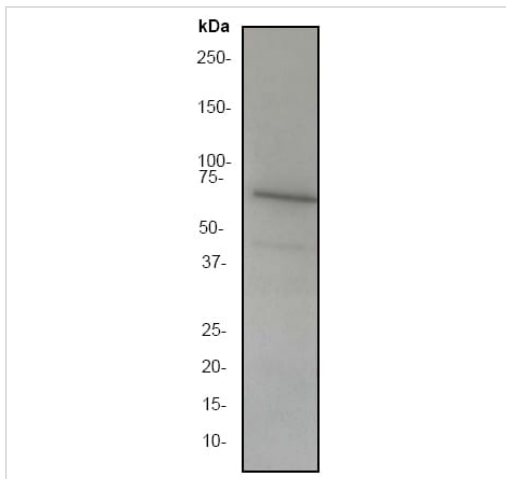
Immunohistochemistry (Formalin/PFA-fixed paraffin-embedded sections) analysis of human endometrium cancer tissue labeling LIMK2 with ab45165 at 1/250 dilution. Heat mediated antigen retrieval was performed using Tris/EDTA buffer pH 9. **ab97051**, a HRP-conjugated goat anti-rabbit IgG (H+L) was used as the secondary antibody (1/500). Negative control using PBS instead of primary antibody. Counterstained with hematoxylin.

Immunohistochemistry (Formalin/PFA-fixed paraffin-embedded sections) - Anti-LIMK2 antibody [EP969Y] - C-terminal (ab45165)



Immunocytochemistry/ Immunofluorescence analysis of Ramos cells labeling LIMK2 with ab45165 at 1/250. Goat anti rabbit IgG(Alexa Fluor® 488); **ab150077** at 1/1000 dilution was used as the secondary antibody. Cells were fixed with 4% paraformaldehyde and permeabilised with 0.1% tritonX-100. DAPI (blue) was used as a nuclear counterstain.

Immunocytochemistry/ Immunofluorescence - Anti-LIMK2 antibody [EP969Y] - C-terminal (ab45165)







Anti-LIMK2 antibody [EP969Y] - C-terminal (ab45165) at 1/2000 dilution + Ramos (Human Burkitt's lymphoma cell line) membrane lysate

Predicted band size: 72 kDa

Observed band size: 70 kDa

Western blot - Anti-LIMK2 antibody [EP969Y] - C-terminal (ab45165)

Why choose a recombinant antibody?

 Research with confidence Consistent and reproducible results	 Long-term and scalable supply Recombinant technology
 Success from the first experiment Confirmed specificity	 Ethical standards compliant Animal-free production

Anti-LIMK2 antibody [EP969Y] - C-terminal (ab45165)

Please note: All products are "FOR RESEARCH USE ONLY. NOT FOR USE IN DIAGNOSTIC PROCEDURES"

Our Abpromise to you: Quality guaranteed and expert technical support

- Replacement or refund for products not performing as stated on the datasheet
- Valid for 12 months from date of delivery
- Response to your inquiry within 24 hours
- We provide support in Chinese, English, French, German, Japanese and Spanish
- Extensive multi-media technical resources to help you
- We investigate all quality concerns to ensure our products perform to the highest standards

If the product does not perform as described on this datasheet, we will offer a refund or replacement. For full details of the Abpromise, please visit <https://www.abcam.co.jp/abpromise> or contact our technical team.

Terms and conditions

- Guarantee only valid for products bought direct from Abcam or one of our authorized distributors