

# Anti-LIM Kinase 1 antibody [OTI3G3] ab119084

**3 References** [画像数 4](#)

### 製品の概要

---

製品名	Anti-LIM Kinase 1 antibody [OTI3G3]
製品の詳細	Mouse monoclonal [OTI3G3] to LIM Kinase 1
由来種	Mouse
アプリケーション	<b>適用あり:</b> WB, ICC/IF, IHC-P
種交差性	<b>交差種:</b> Human, African green monkey
免疫原	Recombinant full length protein corresponding to Human LIM Kinase 1. Produced in HEK-293T cells. NP_002305. Database link: <a href="#">P53667</a>
ポジティブ・コントロール	WB: HEK-293T cells transfected with LIM Kinase 1. ICC/IF: COS-7 cells transiently transfected with LIM Kinase 1. IHC-P: Human endometrium adenocarcinoma and lymphoma tissue.
特記事項	<p>The clone number has been updated from 3G3 to OTI3G3, both clone numbers name the same clone.</p> <p>The Life Science industry has been in the grips of a reproducibility crisis for a number of years. Abcam is leading the way in addressing this with our range of recombinant monoclonal antibodies and knockout edited cell lines for gold-standard validation. Please check that this product meets your needs before purchasing.</p> <p>If you have any questions, special requirements or concerns, please send us an inquiry and/or contact our Support team ahead of purchase. Recommended alternatives for this product can be found below, along with publications, customer reviews and Q&amp;As</p>

### 製品の特性

---

製品の状態	Liquid
保存方法	Shipped at 4°C. Store at +4°C short term (1-2 weeks). Upon delivery aliquot. Store at -20°C. Avoid freeze / thaw cycle.
バッファー	pH: 7.30 Preservative: 0.02% Sodium azide Constituents: PBS, 1% BSA, 50% Glycerol
精製度	Affinity purified
特記事項(精製)	Purified from cell culture supernatant by affinity chromatography
ポリ/モノ	モノクローナル

クローン名	OTI3G3
アイソタイプ	IgG2b

## アプリケーション

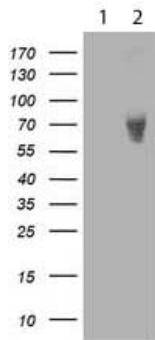
The Abpromise guarantee **Abpromise保証は、次のテスト済みアプリケーションにおけるab119084の使用に適用されず**  
 アプリケーションノートには、推奨の開始希釈率がありますが、適切な希釈率につきましてはご検討ください。

アプリケーション	Abreviews	特記事項
WB		1/2000. Predicted molecular weight: 73 kDa.
ICC/IF		1/100.
IHC-P		1/150. Perform heat mediated antigen retrieval before commencing with IHC staining protocol.

## ターゲット情報

<b>機能</b>	Protein kinase which regulates actin filament dynamics. Phosphorylates and inactivates the actin binding/depolymerizing factor cofilin, thereby stabilizing the actin cytoskeleton. Stimulates axonal outgrowth and may be involved in brain development. Isoform 3 has a dominant negative effect on actin cytoskeletal changes.
<b>組織特異性</b>	Highest expression in both adult and fetal nervous system. Detected ubiquitously throughout the different regions of adult brain, with highest levels in the cerebral cortex. Expressed to a lesser extent in heart and skeletal muscle.
<b>関連疾患</b>	Note=LIMK1 is located in the Williams-Beuren syndrome (WBS) critical region. WBS results from a hemizygous deletion of several genes on chromosome 7q11.23, thought to arise as a consequence of unequal crossing over between highly homologous low-copy repeat sequences flanking the deleted region.
<b>配列類似性</b>	Belongs to the protein kinase superfamily. TKL Ser/Thr protein kinase family. Contains 2 LIM zinc-binding domains. Contains 1 PDZ (DHR) domain. Contains 1 protein kinase domain.
<b>翻訳後修飾</b>	Autophosphorylated. Phosphorylated on serine and/or threonine residues by ROCK1. May be dephosphorylated and inactivated by SSH1. Ubiquitinated. 'Lys-48'-linked polyubiquitination by RNF6 leads to proteasomal degradation through the 26S proteasome, modulating LIMK1 levels in the growth cone and its effect on axonal outgrowth. Also polyubiquitinated by RLIM.
<b>細胞内局在</b>	Cytoplasm. Cell projection > growth cone.

## 画像



Western blot - Anti-LIM Kinase 1 antibody [OTI3G3] (ab119084)

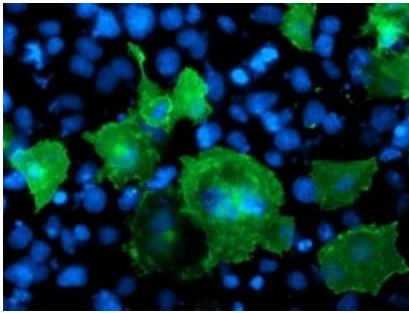
**All lanes** : Anti-LIM Kinase 1 antibody [OTI3G3] (ab119084) at 1/2000 dilution

**Lane 1** : HEK-293T (Human epithelial cell line from embryonic kidney transformed with large T antigen) cell lysate transfected the pCMV6-ENTRY control

**Lane 2** : HEK-293T cell lysate transfected the pCMV6-ENTRY LIM Kinase 1

Lysates/proteins at 5 µg per lane.

**Predicted band size:** 73 kDa



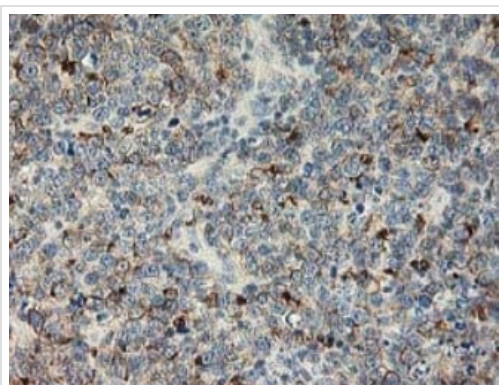
Immunocytochemistry/ Immunofluorescence - Anti-LIM Kinase 1 antibody [OTI3G3] (ab119084)

Immunofluorescent staining of COS-7 cells transiently transfected by pCMV6-ENTRY LIM Kinase 1 using ab119084 at a dilution of 1/100.



Immunohistochemistry (Formalin/PFA-fixed paraffin-embedded sections) - Anti-LIM Kinase 1 antibody [OTI3G3] (ab119084)

Immunohistochemistry (Formalin/PFA-fixed paraffin-embedded sections) of human endometrium adenocarcinoma tissue using ab119084 at a 1/150 dilution. Heat-induced epitope retrieval by 10 mM citric buffer, pH 6.0, 100°C for 10 minutes.



Immunohistochemistry (Formalin/PFA-fixed paraffin-embedded sections) of human lymphoma tissue using ab119084 at a 1/150 dilution. Heat-induced epitope retrieval by 10 mM citric buffer, pH 6.0, 100°C for 10 minutes.

Immunohistochemistry (Formalin/PFA-fixed paraffin-embedded sections) - Anti-LIM Kinase 1 antibody [OTI3G3] (ab119084)

**Please note:** All products are "FOR RESEARCH USE ONLY. NOT FOR USE IN DIAGNOSTIC PROCEDURES"

### **Our Abpromise to you: Quality guaranteed and expert technical support**

---

- Replacement or refund for products not performing as stated on the datasheet
- Valid for 12 months from date of delivery
- Response to your inquiry within 24 hours
  
- We provide support in Chinese, English, French, German, Japanese and Spanish
- Extensive multi-media technical resources to help you
- We investigate all quality concerns to ensure our products perform to the highest standards

If the product does not perform as described on this datasheet, we will offer a refund or replacement. For full details of the Abpromise, please visit <https://www.abcam.co.jp/abpromise> or contact our technical team.

### **Terms and conditions**

---

- Guarantee only valid for products bought direct from Abcam or one of our authorized distributors