

Anti-LIM Kinase 1 antibody [EPR912] ab108507

KO 評価済 リコンビナント RabMAb

5 References 画像数 3

製品の概要

製品名	Anti-LIM Kinase 1 antibody [EPR912]
製品の詳細	Rabbit monoclonal [EPR912] to LIM Kinase 1
由来種	Rabbit
アプリケーション	適用あり: WB 適用なし: Flow Cyt, ICC/IF, IHC-P or IP
種交差性	交差種: Mouse, Rat, Human
免疫原	Synthetic peptide. This information is proprietary to Abcam and/or its suppliers.
ポジティブ・コントロール	U-87 MG, SH SY5Y and Ramos cell lysates.
特記事項	<p>This product is a recombinant monoclonal antibody, which offers several advantages including:</p> <ul style="list-style-type: none"> - High batch-to-batch consistency and reproducibility - Improved sensitivity and specificity - Long-term security of supply - Animal-free production <p>For more information see here.</p> <p>Our RabMAb[®] technology is a patented hybridoma-based technology for making rabbit monoclonal antibodies. For details on our patents, please refer to RabMAb[®] patents.</p> <p>Rat: We have preliminary internal testing data to indicate this antibody may not react with this species. Please contact us for more information.</p>

製品の特性

製品の状態	Liquid
保存方法	Shipped at 4°C. Store at -20°C. Stable for 12 months at -20°C.
バッファー	<p>pH: 7.20</p> <p>Preservative: 0.05% Sodium azide</p> <p>Constituents: 0.1% BSA, 40% Glycerol (glycerin, glycerine), 9.85% Tris glycine, 50% Tissue culture supernatant</p>
精製度	Protein A purified
ポリ/モノ	モノクローナル

クローン名 EPR912
アイソタイプ IgG

アプリケーション

The Abpromise guarantee **Abpromise保証は、** 次のテスト済みアプリケーションにおけるab108507の使用に適用されます
アプリケーションノートには、推奨の開始希釈率がありますが、適切な希釈率につきましてはご検討ください。

アプリケーション	Abreviews	特記事項
WB		1/1000 - 1/10000. Predicted molecular weight: 73 kDa.

追加情報 Is unsuitable for Flow Cyt, ICC/IF, IHC-P or IP.

ターゲット情報

機能 Protein kinase which regulates actin filament dynamics. Phosphorylates and inactivates the actin binding/depolymerizing factor cofilin, thereby stabilizing the actin cytoskeleton. Stimulates axonal outgrowth and may be involved in brain development. Isoform 3 has a dominant negative effect on actin cytoskeletal changes.

組織特異性 Highest expression in both adult and fetal nervous system. Detected ubiquitously throughout the different regions of adult brain, with highest levels in the cerebral cortex. Expressed to a lesser extent in heart and skeletal muscle.

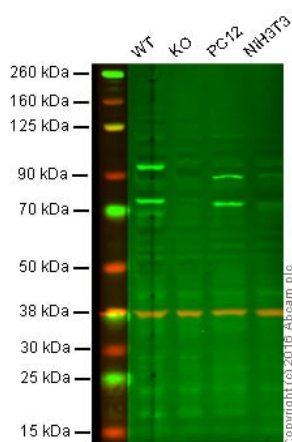
関連疾患 Note=LIMK1 is located in the Williams-Beuren syndrome (WBS) critical region. WBS results from a hemizygous deletion of several genes on chromosome 7q11.23, thought to arise as a consequence of unequal crossing over between highly homologous low-copy repeat sequences flanking the deleted region.

配列類似性 Belongs to the protein kinase superfamily. TKL Ser/Thr protein kinase family.
Contains 2 LIM zinc-binding domains.
Contains 1 PDZ (DHR) domain.
Contains 1 protein kinase domain.

翻訳後修飾 Autophosphorylated.
Phosphorylated on serine and/or threonine residues by ROCK1. May be dephosphorylated and inactivated by SSH1.
Ubiquitinated. 'Lys-48'-linked polyubiquitination by RNF6 leads to proteasomal degradation through the 26S proteasome, modulating LIMK1 levels in the growth cone and its effect on axonal outgrowth. Also polyubiquitinated by RLIM.

細胞内局在 Cytoplasm. Cell projection > growth cone.

画像



Western blot - Anti-LIM Kinase 1 antibody [EPR912]
(ab108507)

Lane 1: Wild-type HAP1 cell lysate (40 µg)

Lane 2: LIMK1 knockout HAP1 cell lysate (40 µg)

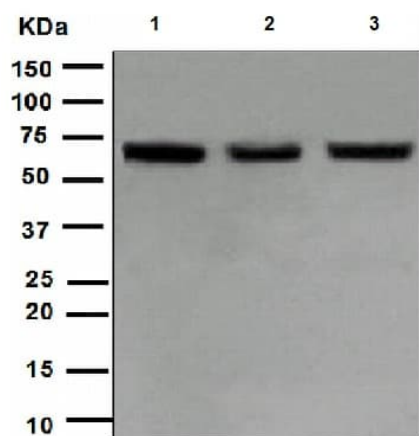
Lane 3: PC12 cell lysate (20 µg)

Lane 4: NIH3T3 cell lysate (20 µg)

Lanes 1 - 4: Merged signal (red and green). Green - ab108507 observed at 70 kDa. Red - loading control, **ab8245**, observed at 37 kDa.

ab108507 was shown to specifically react with LIM Kinase 1 when LIM Kinase 1 knockout samples were used. Wild-type and LIM Kinase 1 knockout samples were subjected to SDS-PAGE.

Ab108507 and **ab8245** (loading control to GAPDH) were diluted at 1/500 and 1/10000 dilution respectively and incubated overnight at 4°C. Blots were developed with Goat anti-Rabbit IgG H&L (IRDye® 800CW) preadsorbed (**ab216773**) and Goat anti-Mouse IgG H&L (IRDye® 680RD) preadsorbed (**ab216776**) secondary antibodies at 1/10000 dilution for 1 hour at room temperature before imaging.



Western blot - Anti-LIM Kinase 1 antibody [EPR912]
(ab108507)

All lanes : Anti-LIM Kinase 1 antibody [EPR912] (ab108507) at 1/1000 dilution

Lane 1 : U-87 MG cell lysate

Lane 2 : SH SY5Y cell lysate

Lane 3 : Ramos cell lysate

Lysates/proteins at 10 µg per lane.

Predicted band size: 73 kDa

Why choose a recombinant antibody?



Research with confidence
Consistent and reproducible results



Long-term and scalable supply
Recombinant technology



Success from the first experiment
Confirmed specificity



Ethical standards compliant
Animal-free production

Anti-LIM Kinase 1 antibody [EPR912] (ab108507)

Please note: All products are "FOR RESEARCH USE ONLY. NOT FOR USE IN DIAGNOSTIC PROCEDURES"

Our Abpromise to you: Quality guaranteed and expert technical support

- Replacement or refund for products not performing as stated on the datasheet
- Valid for 12 months from date of delivery
- Response to your inquiry within 24 hours
- We provide support in Chinese, English, French, German, Japanese and Spanish
- Extensive multi-media technical resources to help you
- We investigate all quality concerns to ensure our products perform to the highest standards

If the product does not perform as described on this datasheet, we will offer a refund or replacement. For full details of the Abpromise, please visit <https://www.abcam.co.jp/abpromise> or contact our technical team.

Terms and conditions

- Guarantee only valid for products bought direct from Abcam or one of our authorized distributors