


## Anti-LIM Kinase 1 antibody ab95186

### 3 References 画像数 2

## 製品の概要

|              |   |
|--------------|---|
| 製品名          | Anti-LIM Kinase 1 antibody  |
| 製品の詳細        | Rabbit polyclonal to LIM Kinase 1   |
| 由来種          | Rabbit  |
| アプリケーション     | 適用あり: WB, IP  |
| 種交差性         | 交差種: Human<br>交差が予測される動物種: Rabbit, Guinea pig, Cow, Dog, Pig, Chimpanzee, Rhesus monkey, Gorilla, Orangutan    |
| 免疫原          | Synthetic peptide corresponding to Human LIM Kinase 1 aa 597-647 (C terminal).  |
| ポジティブ・コントロール | HeLa whole cell lysate ( <a href="#">ab150035</a> )   |
| 特記事項         | <p>The Life Science industry has been in the grips of a reproducibility crisis for a number of years. Abcam is leading the way in addressing this with our range of recombinant monoclonal antibodies and knockout edited cell lines for gold-standard validation. Please check that this product meets your needs before purchasing.</p> <p>If you have any questions, special requirements or concerns, please send us an inquiry and/or contact our Support team ahead of purchase. Recommended alternatives for this product can be found below, along with publications, customer reviews and Q&amp;As</p> |

## 製品特性

|          |  |
|----------|--|
| 製品の状態    | Liquid   |
| 保存方法     | Shipped at 4°C. Upon delivery aliquot and store at -20°C. Avoid freeze / thaw cycles.          |
| バッファー    | pH: 6.8<br>Preservative: 0.09% Sodium azide<br>Constituents: 0.1% BSA, Tris buffered saline    |
| 精製度      | Immunogen affinity purified  |
| 特記事項(精製) | ab95186 was affinity purified using an epitope specific to LIMK1 immobilized on solid support. |
| ポリモノ     | ポリクローナル  |
| アイソタイプ   | IgG  |

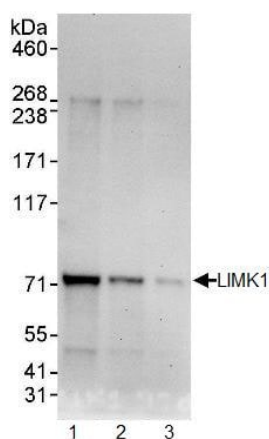
**The Abpromise guarantee** Abpromise保証は、 次のテスト済みアプリケーションにおけるab95186の使用に適用されます  
アプリケーションノートには、推奨の開始希釈率がありますが、適切な希釈率につきましてはご検討ください。

| アプリケーション | Abreviews | 特記事項  |
|----------|-----------|---|
| WB       |           | 1/2000 - 1/10000. Predicted molecular weight: 73 kDa. |
| IP       |           | Use at 2-5 µg/mg of lysate.                           |

## ターゲット情報

|       |   |
|-------|---|
| 機能    | Protein kinase which regulates actin filament dynamics. Phosphorylates and inactivates the actin binding/depolymerizing factor cofilin, thereby stabilizing the actin cytoskeleton. Stimulates axonal outgrowth and may be involved in brain development. Isoform 3 has a dominant negative effect on actin cytoskeletal changes.   |
| 組織特異性 | Highest expression in both adult and fetal nervous system. Detected ubiquitously throughout the different regions of adult brain, with highest levels in the cerebral cortex. Expressed to a lesser extent in heart and skeletal muscle.  |
| 関連疾患  | Note=LIMK1 is located in the Williams-Beuren syndrome (WBS) critical region. WBS results from a hemizygous deletion of several genes on chromosome 7q11.23, thought to arise as a consequence of unequal crossing over between highly homologous low-copy repeat sequences flanking the deleted region.   |
| 配列類似性 | Belongs to the protein kinase superfamily. TKL Ser/Thr protein kinase family.<br>Contains 2 LIM zinc-binding domains.<br>Contains 1 PDZ (DHR) domain.<br>Contains 1 protein kinase domain.  |
| 翻訳後修飾 | Autophosphorylated.<br>Phosphorylated on serine and/or threonine residues by ROCK1. May be dephosphorylated and inactivated by SSH1.<br>Ubiquitinated. 'Lys-48'-linked polyubiquitination by RNF6 leads to proteasomal degradation through the 26S proteasome, modulating LIMK1 levels in the growth cone and its effect on axonal outgrowth. Also polyubiquitinated by RLIM. |
| 細胞内局在 | Cytoplasm. Cell projection > growth cone.   |

## 画像



Western blot - Anti-LIM Kinase 1 antibody (ab95186)

**All lanes :** Anti-LIM Kinase 1 antibody (ab95186) at 0.04 µg/ml

**Lane 1 :** HeLa whole cell lysate at 50 µg

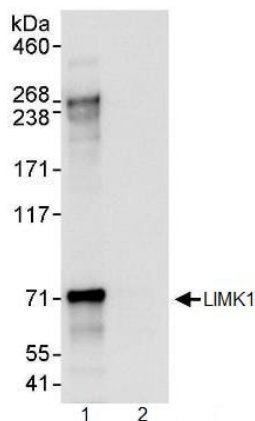
**Lane 2 :** HeLa whole cell lysate at 15 µg

**Lane 3 :** HeLa whole cell lysate at 5 µg

Developed using the ECL technique.

**Predicted band size:** 73 kDa

**Exposure time:** 30 seconds



Immunoprecipitation - Anti-LIM Kinase 1 antibody (ab95186)

ab95186 at 3 µg/mg precipitating LIMK1 from HeLa whole cell lysate.

Lane 1; HeLa whole cell lysate. Lane 2; Control IgG. 1mg of lysate used for IP and 20% of IP loaded.

Detection utilised ab95186 at 0.4 µg/ml followed by ECL with a 5 second exposure.

**Please note:** All products are "FOR RESEARCH USE ONLY. NOT FOR USE IN DIAGNOSTIC PROCEDURES"

### Our Abpromise to you: Quality guaranteed and expert technical support

- Replacement or refund for products not performing as stated on the datasheet
- Valid for 12 months from date of delivery

- Response to your inquiry within 24 hours
- We provide support in Chinese, English, French, German, Japanese and Spanish
- Extensive multi-media technical resources to help you
- We investigate all quality concerns to ensure our products perform to the highest standards

If the product does not perform as described on this datasheet, we will offer a refund or replacement. For full details of the Abpromise, please visit <https://www.abcam.co.jp/abpromise> or contact our technical team.

#### **Terms and conditions**

---

- Guarantee only valid for products bought direct from Abcam or one of our authorized distributors