

Anti-LI Cadherin antibody [EPR3996] ab109190

リコンビナント RabMAb

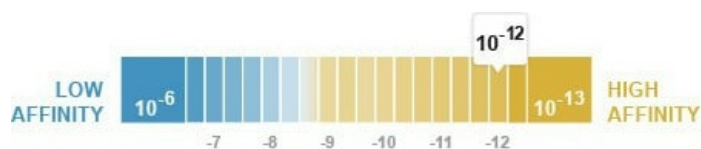
画像数 12

製品の概要

製品名	Anti-LI Cadherin antibody [EPR3996]
製品の詳細	Rabbit monoclonal [EPR3996] to LI Cadherin
由来種	Rabbit
アプリケーション	適用あり: WB, IHC-P 適用なし: Flow Cyt, ICC/IF or IP
種交差性	交差種: Human
免疫原	Synthetic peptide. This information is proprietary to Abcam and/or its suppliers.
ポジティブ・コントロール	WB: Human small intestine, Human colon cancer, and HT-29 cell lysates. Human LoVo, small intestine and colon lysates. IHC-P: Human colon and Human colonic adenocarcinoma tissues
特記事項	<p>This product is a recombinant monoclonal antibody, which offers several advantages including:</p> <ul style="list-style-type: none"> - High batch-to-batch consistency and reproducibility - Improved sensitivity and specificity - Long-term security of supply - Animal-free production <p>For more information see here.</p> <p>Our RabMAb[®] technology is a patented hybridoma-based technology for making rabbit monoclonal antibodies. For details on our patents, please refer to RabMAb[®] patents.</p> <p>Mouse, Rat: We have preliminary internal testing data to indicate this antibody may not react with these species. Please contact us for more information.</p>

製品の特性

製品の状態	Liquid
保存方法	Shipped at 4°C. Store at +4°C short term (1-2 weeks). Upon delivery aliquot. Store at -20°C long term. Avoid freeze / thaw cycle.
解離定数 (K_D 値)	K _D = 2.90 x 10 ⁻¹² M



Learn more about K_D

バッファー	pH: 7.20 Preservative: 0.01% Sodium azide Constituents: 0.05% BSA, 40% Glycerol (glycerin, glycerine), 59% PBS
精製度	Protein A purified
ポリ/モノ	モノクローナル
クローン名	EPR3996
アイソタイプ	IgG

アプリケーション

The Abpromise guarantee **Abpromise保証は、次のテスト済みアプリケーションにおけるab109190の使用に適用されます**
アプリケーションノートには、推奨の開始希釈率がありますが、適切な希釈率につきましてはご検討ください。

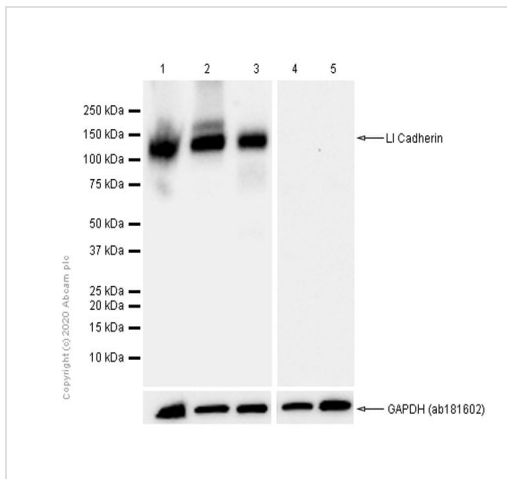
アプリケーション	Abreviews	特記事項
WB		1/1000 - 1/10000. Detects a band of approximately 120 kDa (predicted molecular weight: 92 kDa).
IHC-P		1/250 - 1/500. Perform heat mediated antigen retrieval before commencing with IHC staining protocol.

追加情報 Is unsuitable for Flow Cyt, ICC/IF or IP.

ターゲット情報

機能	Cadherins are calcium dependent cell adhesion proteins. They preferentially interact with themselves in a homophilic manner in connecting cells; cadherins may thus contribute to the sorting of heterogeneous cell types. LI-cadherin may have a role in the morphological organization of liver and intestine. Involved in intestinal peptide transport.
組織特異性	Expressed in the gastrointestinal tract and pancreatic duct. Not detected in kidney, lung, liver, brain, adrenal gland and skin.
配列類似性	Contains 7 cadherin domains.
細胞内局在	Cell membrane.

画像



Western blot - Anti-LI Cadherin antibody [EPR3996] (ab109190)

Lanes 1-3 : Anti-LI Cadherin antibody [EPR3996] (ab109190) at 1/1000 dilution (Purified)

Lanes 4-5 : Anti-LI Cadherin antibody [EPR3996] (ab109190) at 1/1000 dilution

Lane 1 : LoVo (Human colorectal adenocarcinoma epithelial cell) whole cell lysate

Lane 2 : Human small intestine lysate

Lane 3 : Human colon lysate

Lane 4 : Human spleen lysate

Lane 5 : Human kidney lysate

Lysates/proteins at 20 µg per lane.

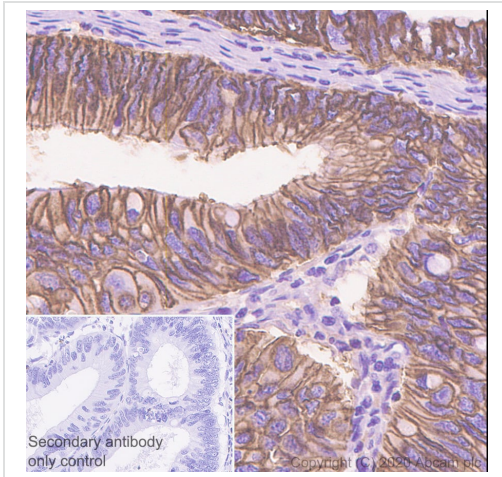
Secondary

All lanes : Goat Anti-Rabbit IgG (HRP) with minimal cross-reactivity with human IgG at 1/2000 dilution

Predicted band size: 92 kDa

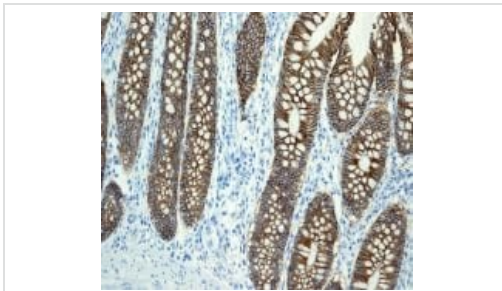
Observed band size: 120 kDa

The expression profile and molecular weight observed are consistent with what has been described in the literature (PMID: 18552820).



Immunohistochemistry (Formalin/PFA-fixed paraffin-embedded sections) - Anti-LI Cadherin antibody [EPR3996] (ab109190)

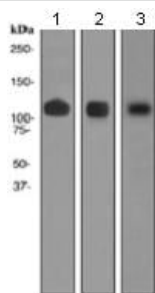
Immunohistochemistry (Formalin/PFA-fixed paraffin-embedded sections) analysis of human colon cancer tissue sections labeling LI Cadherin with purified ab109190 at 1/300 dilution (0.48 $\mu\text{g}/\text{mL}$). Heat mediated antigen retrieval using Bond™ Epitope Retrieval Solution 2 (pH 9.0). Rabbit specific IHC polymer detection kit HRP/DAB (**ab209101**) was used as the secondary antibody. Negative control: PBS instead of the primary antibody. Hematoxylin was used as a counterstain.



Immunohistochemistry (Formalin/PFA-fixed paraffin-embedded sections) - Anti-LI Cadherin antibody [EPR3996] (ab109190)

Immunohistochemical staining of paraffin-embedded Human colon tissue using ab109190 at a dilution of 1/250.

Perform heat mediated antigen retrieval before commencing with IHC staining protocol.



Western blot - Anti-LI Cadherin antibody [EPR3996] (ab109190)

All lanes : Anti-LI Cadherin antibody [EPR3996] (ab109190) at 1/1000 dilution

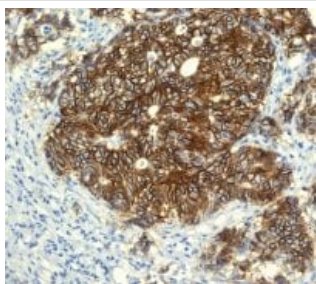
Lane 1 : Human small intestine cell lysate

Lane 2 : Human colon cancer cell lysate

Lane 3 : HT-29 cell lysate

Lysates/proteins at 10 µg per lane.

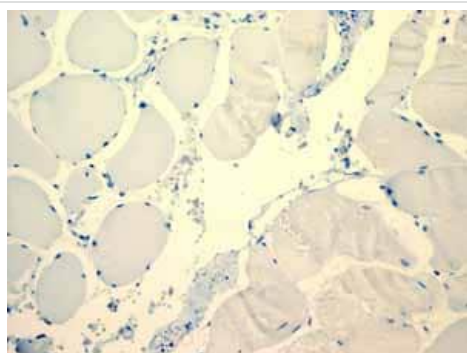
Predicted band size: 92 kDa



Immunohistochemistry (Formalin/PFA-fixed paraffin-embedded sections) - Anti-LI Cadherin antibody [EPR3996] (ab109190)

Immunohistochemical staining of paraffin-embedded Human colonic adenocarcinoma tissue using ab109190 at a dilution of 1/250.

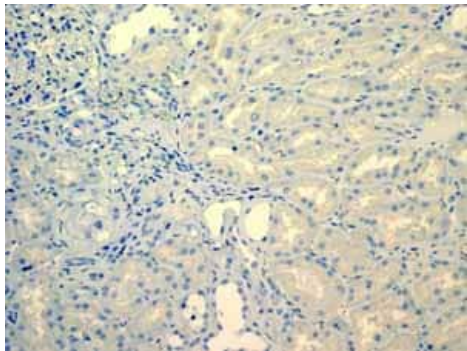
Perform heat mediated antigen retrieval before commencing with IHC staining protocol.



Immunohistochemistry (Formalin/PFA-fixed paraffin-embedded sections) - Anti-LI Cadherin antibody [EPR3996] (ab109190)

ab109190 showing negative staining in Skeletal muscle tissue.

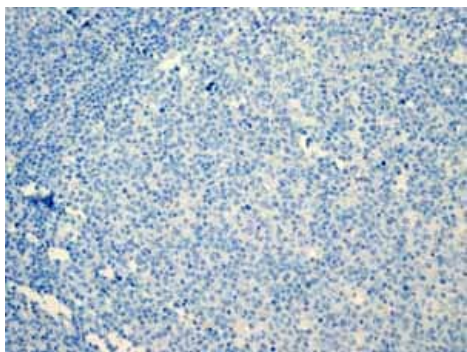
Perform heat mediated antigen retrieval before commencing with IHC staining protocol.



Immunohistochemistry (Formalin/PFA-fixed paraffin-embedded sections) - Anti-L1 Cadherin antibody [EPR3996] (ab109190)

ab109190 showing negative staining in Normal kidney tissue.

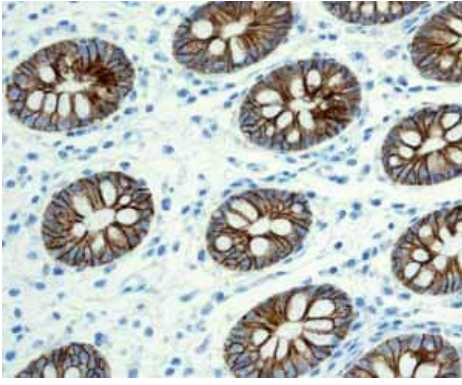
Perform heat mediated antigen retrieval before commencing with IHC staining protocol.



Immunohistochemistry (Formalin/PFA-fixed paraffin-embedded sections) - Anti-L1 Cadherin antibody [EPR3996] (ab109190)

ab109190 showing negative staining in Normal tonsil tissue.

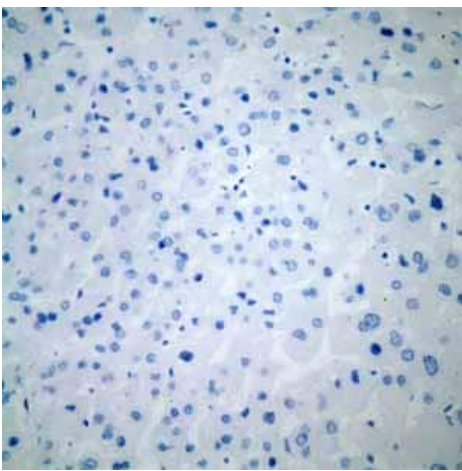
Perform heat mediated antigen retrieval before commencing with IHC staining protocol.



Immunohistochemistry (Formalin/PFA-fixed paraffin-embedded sections) - Anti-LI Cadherin antibody [EPR3996] (ab109190)

ab109190 showing positive staining in Normal colon tissue.

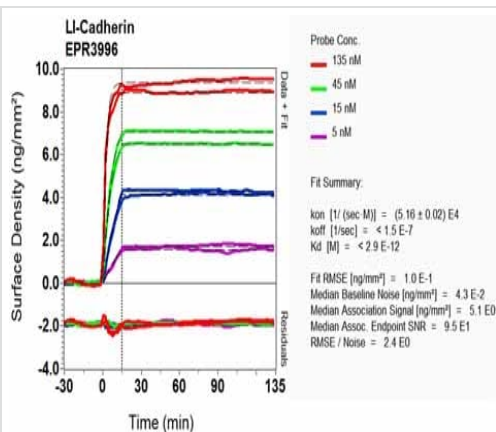
Perform heat mediated antigen retrieval before commencing with IHC staining protocol.



Immunohistochemistry (Formalin/PFA-fixed paraffin-embedded sections) - Anti-LI Cadherin antibody [EPR3996] (ab109190)

ab109190 showing negative staining in Normal brain tissue.

Perform heat mediated antigen retrieval before commencing with IHC staining protocol.



OIR-D Scanning - Anti-LI Cadherin antibody [EPR3996] (ab109190)

Equilibrium dissociation constant (K_D)

Learn more about K_D

[Click here to learn more about \$K_D\$](#)

Why choose a recombinant antibody?

Research with confidence
Consistent and reproducible results

Long-term and scalable supply
Recombinant technology

Success from the first experiment
Confirmed specificity

Ethical standards compliant
Animal-free production

Anti-L1 Cadherin antibody [EPR3996] (ab109190)

Please note: All products are "FOR RESEARCH USE ONLY. NOT FOR USE IN DIAGNOSTIC PROCEDURES"

Our Abpromise to you: Quality guaranteed and expert technical support

- Replacement or refund for products not performing as stated on the datasheet
- Valid for 12 months from date of delivery
- Response to your inquiry within 24 hours
- We provide support in Chinese, English, French, German, Japanese and Spanish
- Extensive multi-media technical resources to help you
- We investigate all quality concerns to ensure our products perform to the highest standards

If the product does not perform as described on this datasheet, we will offer a refund or replacement. For full details of the Abpromise, please visit <https://www.abcam.co.jp/abpromise> or contact our technical team.

Terms and conditions

- Guarantee only valid for products bought direct from Abcam or one of our authorized distributors